



carhartt 
2017 INDUSTRIAL





UNITED WE OUTWORK THEM ALL

Since 1889, Carhartt has been the brand behind the hardest working people on earth. Making it the uniform for any one who chooses to take on any rugged corner of this great land, with gear built to serve and protect all those who wear this patch.

For over 127 years, Carhartt has worked side-by-side with the men and women building our country. Getting our hands dirty to gain knowledge of how their workday gets done and uncover the insights we build upon to make quality gear that lives up to our name and your highest standards. Applying innovations and new technologies engineered to keep crews safer, compliant, and comfortable on the job. So you can focus on doing your job with the confidence that your gear will be working just as hard.

Technologies & Innovations



FR styles with Carhartt Force® are engineered to wick sweat with FastDry® technology and fight odors to keep workers comfortable on the job.



Outerwear for the coldest conditions with Wind Fighter™ technology to protect against the wind. The sherpa lining plus 3M™ Thinsulate™ Platinum Insulation FR keeps workers warm in the harshest cold conditions.



3M and Thinsulate are trademarks of 3M.



Carhartt FR Rain Defender® durable water-repellent makes our gear rain, mist and snow resistant.



Looks traditional. Feels exceptional. Engineered to provide stretch without bulk, and every element moves with you so you can work easier.

STYLE NUMBER REFERENCE

| Style # | Page # | Rainwear | Big & Tall |
|---------|--------|--------------------------|------------|
| B216 | 29 | Shoreline Pant | • |
| J162 | 29 | Shoreline Jacket | • |
| 102382 | 29 | Women's Shoreline Jacket | |

| Style # | Page # | Outerwear | Big & Tall |
|---------|--------|--|------------|
| C61 | 26 | Ridge Coat | • |
| C003 | 23 | Duck Traditional Coat | • |
| J001 | 22 | Duck Detroit Jacket | • |
| J130 | 24 | Quilted-Flannel-Lined Sandstone Active Jac | • |
| J131 | 22 | Thermal-Lined Duck Active Jac | • |
| J140 | 22 | Quilted-Flannel-Lined Duck Active Jac | • |
| V33 | 25 | Mock-Neck Vest | • |
| 101492 | 28 | Quick Duck® Jefferson Traditional Jacket | • |
| 102199 | 28 | Crowley Jacket | • |
| WJ130 | 24 | Women's Sandstone Active Jac | |
| WJ141 | 24 | Women's Sandstone Sierra Jacket | |
| WV001 | 25 | Women's Sandstone Mock Neck Vest | |

| Style # | Page # | Bib Overalls & Coveralls | Big & Tall |
|---------|--------|---|------------|
| R01 | 23 | Duck Bib Overalls | • |
| R27 | 27 | Quilt-Lined Sandstone Bib Overalls | |
| R41 | 23 | Quilt-Lined Zip-To-Thigh Bib Overalls | • |
| 102743 | 27 | Women's Weathered Duck Wildwood Bib Overalls <i>New Available July 2017</i> | |

| Style # | Page # | 5-Pocket & Work Jeans | Big & Tall |
|---------|--------|-------------------------------------|------------|
| B13 | 21 | Loose/Original-Fit Work Dungaree | • |
| B17 | 21 | Relaxed-Fit Tapered-Leg Jean | • |
| 101483 | 20 | Relaxed-Fit Holter Jean | |
| 101496 | 20 | Straight/Traditional-Fit Elton Jean | |

| Style # | Page # | Work Pants | Big & Tall |
|---------|--------|--|------------|
| B11 | 18 | Washed-Duck Work Dungaree | |
| B136 | 18 | Washed-Duck Double-Front Work Dungaree | |
| B151 | 16 | Canvas Work Dungaree | |
| 102080 | 17 | Women's Original-Fit Crawford Pant | |
| 102291 | 17 | Rugged Flex® Rigby Dungaree | |

| Style # | Page # | Shorts | Big & Tall |
|---------|--------|--------------------------|------------|
| B147 | 16 | Canvas Work Short | |
| 102514 | 17 | Rugged Flex® Rigby Short | |

STYLE NUMBER REFERENCE

| Style # | Page # | Woven Shirts | Big & Tall |
|---------|--------|---|------------|
| 102417 | 11 | Force Ridgefield Solid Short-Sleeve Shirt | • |
| 102418 | 11 | Force Ridgefield Solid Long-Sleeve Shirt | • |
| 102473 | 11 | Women's Force Ridgefield Shirt New Available July 2017 | |

| Style # | Page # | Knit Shirts | Big & Tall |
|---------|--------|---|------------|
| K84 | 8 | Workwear Pocket Short-Sleeve Henley | • |
| K87 | 8 | Workwear Pocket Short-Sleeve T-Shirt | • |
| K126 | 8 | Workwear Pocket Long-Sleeve T-Shirt | • |
| K128 | 8 | Workwear Pocket Long-Sleeve Henley | • |
| K570 | 12 | Contractors Work Pocket™ Polo | • |
| 100393 | 10 | Force Cotton Delmont Long-Sleeve T-Shirt | • |
| 100410 | 10 | Force Cotton Delmont Short-Sleeve T-Shirt | • |
| 102452 | 9 | Women's Lockhart Short-Sleeve V-Neck T-Shirt New Available July 2017 | |
| 102460 | 12 | Women's Contractor's Short Sleeve Work Polo New Available July 2017 | |
| 102761 | 9 | Women's Lockhart Long-Sleeve V-Neck T-Shirt New Available July 2017 | |

| Style # | Page # | Sweatshirts | Big & Tall |
|---------|--------|---|------------|
| K121 | 14 | Midweight Hooded Sweatshirt | • |
| K122 | 14 | Midweight Hooded Zip-Front Sweatshirt | • |
| 100632 | 14 | Rain Defender® Rutland Thermal-Lined Hooded Zip-Front Sweatshirt | • |
| 102788 | 15 | Women's Clarksburg Full-Zip Hoodie New Available July 2017 | |
| 102790 | 15 | Women's Clarksburg Pullover Sweatshirt New Available July 2017 | |

| Style # | Page # | Accessories | Big & Tall |
|---------|--------|-----------------------------------|------------|
| A18 | 31 | Acrylic Watch Hat | |
| A161 | 30 | Face Mask | |
| A202 | 30 | Fleece 2-in-1 Headwear | |
| A267 | 30 | Force Helmet Liner Mask | |
| 100795 | 30 | Color Enhanced Fleece 2-in-1 Hat | |
| WA018 | 31 | Women's Acrylic Watch Hat | |
| 102367 | 31 | Arctic Quilt-Lined Sandstone Hood | |
| 102368 | 31 | Arctic Quilt-Lined Duck Hood | |

| Style # | Page # | High-Visibility / Color Enhanced | Big & Tall |
|---------|--------|--|------------|
| 100493 | 72 | Force Color Enhanced Short-Sleeve T-Shirt | • |
| 100494 | 72 | Force Color Enhanced Long-Sleeve T-Shirt | • |
| 100495 | 73 | Force High-Visibility Short-Sleeve Class 2 T-Shirt | • |
| 100496 | 73 | Force High-Visibility Long-Sleeve Class 3 T-Shirt | • |
| 100497 | 68 | High-Visibility Class E Waterproof Pant | • |
| 100499 | 68 | High-Visibility Class 3 Waterproof Jacket | • |

INDUSTRIAL

FLAME-RESISTANT

HIGH-VISIBILITY

ADDITIONAL INFORMATION

STYLE NUMBER REFERENCE

| Style # | Page # | High-Visibility / Color Enhanced <i>(continued)</i> | Big & Tall |
|---------|--------|---|------------|
| 100501 | 70 | High-Visibility Class 2 Vest | • |
| 100503 | 70 | High-Visibility Zip-Front Class 3 Sweatshirt | • |
| 100504 | 70 | High-Visibility Zip-Front Class 3 Thermal-Lined Sweatshirt | • |
| 100787 | 68 | High-Visibility Class 3 Waterproof Sherwood Jacket | • |
| 100793 | 69 | Color Enhanced Beanie | |
| 100795 | 69 | Color Enhanced Fleece 2-in-1 Hat | |
| 101694 | 69 | High-Visibility Striped Duck Traditional Coat / Quilt-Lined | • |
| 101696 | 69 | High-Visibility Striped Duck Bib Overall / Quilt-Lined | • |
| 102181 | 72 | Force Color Enhanced Graphic Long-Sleeve T-Shirt | • |

| Style # | Page # | Flame-Resistant | Big & Tall |
|---------|--------|---|------------|
| FRA002 | 36 | Flame-Resistant Midweight Canvas Hood / Quilt-Lined | |
| FRA003 | 59 | Flame-Resistant Double-Layer Force Balaclava | |
| FRA265 | 38 | Flame-Resistant Duck Hood / Quilt-Lined | |
| FRB13 | 47 | Flame-Resistant Signature Denim Dungaree | • |
| FRB004 | 47 | Flame-Resistant Utility Jean – Relaxed Fit | • |
| FRB100 | 46 | Flame-Resistant Signature Denim Jean – Relaxed Fit | • |
| FRB159 | 48 | Flame-Resistant Midweight Canvas Pant – Loose Original Fit | • |
| FRB240 | 49 | Flame-Resistant Canvas Cargo Pant | • |
| FRS003 | 54 | Flame-Resistant Lightweight Twill Shirt | • |
| FRS160 | 54 | Flame-Resistant Classic Twill Shirt | • |
| WFRB159 | 65 | Women's Flame-Resistant Canvas Work Pant | |
| WFRS160 | 65 | Women's Flame-Resistant Classic Twill Shirt | |
| 100170 | 47 | Flame-Resistant Utility Denim Double-Front Jean – Relaxed Fit | • |
| 100234 | 51 | Flame-Resistant Force Cotton Short-Sleeve T-Shirt | • |
| 100235 | 51 | Flame-Resistant Force Cotton Long-Sleeve T-Shirt | • |
| 100237 | 50 | Flame-Resistant Force Cotton Long-Sleeve Henley | • |
| 100432 | 56 | Flame-Resistant Canvas Shirt Jac | • |
| 100445 | 45 | Flame-Resistant Rainwear Bib Overall | • |
| 100447 | 45 | Flame-Resistant Rain Jacket | • |
| 100783 | 42 | Flame-Resistant Extremes® Arctic Parka | • |
| 100784 | 43 | Flame-Resistant Extremes® Arctic Coat | • |
| 100785 | 43 | Flame-Resistant Extremes® Arctic Biberall | • |
| 100791 | 49 | Flame-Resistant Washed Duck Work Dungaree | • |
| 101017 | 44 | Flame-Resistant Traditional Twill Coverall | • |
| 101028 | 54 | Flame-Resistant Classic Plaid Shirt | • |
| 101029 | 37 | Flame-Resistant Mock Neck Vest | • |
| 101107 | 65 | Women's Flame-Resistant Force Cotton Long-Sleeve T-Shirt | |
| 101153 | 51 | Flame-Resistant Force Cotton Graphic Long-Sleeve T-Shirt | • |
| 101200 | 59 | Flame-Resistant Hard Hat Liner | |
| 101245 | 58 | Flame-Resistant Base Force® Cold Weather Weight Top | • |
| 101246 | 58 | Flame-Resistant Base Force® Cold Weather Weight Bottom | • |

STYLE NUMBER REFERENCE

| Style # | Page # | Flame-Resistant <i>(continued)</i> | Big & Tall |
|---------|--------|---|------------|
| 101249 | 65 | Women's Flame-Resistant Signature Denim Jean | |
| 101392 | 43 | Flame-Resistant Extremes® Arctic Hood | |
| 101572 | 55 | Flame-Resistant Snap-Front Shirt | • |
| 101575 | 57 | Flame-Resistant Portage Jacket | • |
| 101576 | 57 | Flame-Resistant Force Rugged Flex® Quarter-Zip Fleece | • |
| 101577 | 57 | Flame-Resistant Force Rugged Flex® Hooded Fleece | • |
| 101578 | 59 | Flame-Resistant Fleece Hat | |
| 101580 | 59 | Flame-Resistant Fleece Neck Gaiter | |
| 101618 | 38 | Flame-Resistant Duck Traditional Coat / Quilt-Lined | • |
| 101621 | 39 | Flame-Resistant Duck Active Jac / Quilt-Lined | • |
| 101622 | 37 | Flame-Resistant Midweight Canvas Active Jac / Quilt-Lined | • |
| 101623 | 39 | Flame-Resistant Duck Bomber Jacket / Quilt-Lined | • |
| 101625 | 36 | Flame-Resistant Lanyard Access Jacket / Quilt-Lined | • |
| 101626 | 38 | Flame-Resistant Duck Bib Overall / Quilt-Lined | • |
| 101627 | 39 | Flame-Resistant Duck Bib Overall / Unlined | • |
| 101628 | 40 | Flame-Resistant Striped Duck Bib Overall / Quilt-Lined | • |
| 101629 | 64 | Women's Flame-Resistant Midweight Canvas Active Jac | |
| 101695 | 40 | Flame-Resistant Striped Duck Traditional Coat / Quilt-Lined | • |
| 101698 | 50 | Flame-Resistant Force Cotton Hybrid Shirt | • |
| 101699 | 51 | Flame-Resistant Striped Force Cotton Long-Sleeve T-Shirt | • |
| 101703 | 41 | Flame-Resistant Striped Duck Bib Overall / Unlined | • |
| 101705 | 41 | Flame-Resistant Striped Coverall | • |
| 101814 | 46 | Flame-Resistant Rugged Flex® Jean – Straight Traditional Fit | • |
| 102015 | 55 | Flame-Resistant Snap Front Plaid Shirt | • |
| 102150 | 44 | Flame-Resistant Deluxe Coverall | • |
| 102179 | 35 | Flame-Resistant Full Swing® Quick Duck® Jacket | • |
| 102182 | 34 | Flame-Resistant Full Swing® Quick Duck® Coat | • |
| 102183 | 35 | Flame-Resistant Quick Duck® Hood | |
| 102459 | 60 | Women's Flame-Resistant Rugged Flex® Twill Shirt New Available July 2017 | |
| 102450 | 62 | Women's Flame-Resistant Rugged Flex® Coverall New Available July 2017 | |
| 102682 | 56 | Flame-Resistant Full Swing® Quick Duck® Shirt Jac New Available July 2017 | • |
| 102685 | 61 | Women's Flame-Resistant Force Cotton Long-Sleeve Crew Neck T-Shirt New Available July 2017 | |
| 102686 | 61 | Women's Flame-Resistant Force Cotton Long-Sleeve Henley New Available July 2017 | |
| 102687 | 60 | Women's Flame-Resistant Force Cotton Hybrid Shirt New Available July 2017 | |
| 102688 | 61 | Women's Flame-Resistant Rugged Flex® Jean – Original-Fit New Available July 2017 | |
| 102689 | 61 | Women's Flame-Resistant Rugged Flex® Canvas Pant – Original-Fit New Available July 2017 | |
| 102691 | 34 | Flame-Resistant Quick Duck® Bib Overall/Quilt-Lined New Available July 2017 | a |
| 102692 | 35 | Flame-Resistant Full Swing® Quick Duck® Lanyard Access Jacket New Available July 2017 | • |
| 102694 | 63 | Women's Flame-Resistant Full Swing® Quick Duck® Jacket/Sherpa Lined | |
| 102843 | 52 | Flame-Resistant High-Visibility Force Hybrid Shirt New Available July 2017 | • |
| 102905 | 52 | Flame-Resistant High-Visibility Long-Sleeve T-Shirt–Class 3 New Available July 2017 | • |

INDUSTRIAL

FLAME-RESISTANT

HIGH-VISIBILITY

ADDITIONAL INFORMATION





INDUSTRIAL

FLAME-RESISTANT

HIGH-VISIBILITY

ADDITIONAL INFORMATION

INDUSTRIAL

MEN'S KNIT SHIRTS

ORIGINAL FIT

Long-lasting, heavyweight, 6.75-ounce, 100% cotton jersey knit. Side-seamed construction minimizes twisting and maximizes comfort while you're on the job. Left-chest pocket with sewn-on Carhartt label. Tagless neck label for comfort.

| | | | | |
|-----|-----|-----|-----|-----|
| BLK | NVY | HGY | BLS | HTG |
| CHR | DES | 600 | 026 | |

| | | | | | | | | |
|---|---|---|----|-----|-----|-----|-----|---------|
| S | M | L | XL | 2XL | 3XL | 4XL | 5XL | |
| • | • | • | • | • | • | • | • | REGULAR |
| • | • | • | • | • | • | • | • | TALL |



A Workwear Pocket Long-Sleeve Henley

K128

- Rib-knit henley collar and cuffs
- Long sleeves
- Imported

Style #/Color
 K128-BLK/Black
 K128-NVY/Navy
 K128-HGY/Heather Gray
 K128-BLS/Bluestone
 K128-HTG/Hunter Green

B Workwear Pocket Long-Sleeve T-Shirt

K126

- Rib-knit crewneck collar and cuffs
- Long sleeves
- Imported

Style #/Color
 K126-NVY/Navy
 K126-BLK/Black
 K126-HGY/Heather Gray
 K126-CHR/Charcoal
 K126-HTG/Hunter Green
 K126-BLS/Bluestone

C Workwear Pocket Short-Sleeve T-Shirt

K87

- Rib-knit crewneck collar
- Short sleeves
- Imported

Style #/Color
 K87-CHR/Charcoal
 K87-600/Red
 K87-HTG/Hunter Green
 K87-BLS/Bluestone
 K87-BLK/Black
 K87-NVY/Navy
 K87-HGY/Heather Gray
 K87-DES/Desert

D Workwear Pocket Short-Sleeve Henley

K84

- Rib-knit henley collar
- Short sleeves
- Imported

Style #/Color
 K84-026/Carbon Heather
 K84-HTG/Hunter Green
 K84-BLS/Bluestone
 K84-BLK/Black
 K84-NVY/Navy
 K84-HGY/Heather Gray
 K84-DES/Desert

WOMEN'S T-SHIRTS RELAXED FIT

5.4-ounce, 60% cotton/40% polyester jersey. Slightly loose for a comfortable fit. V-neck. Tagless neck label for comfort.

001

100



E Lockhart Long-Sleeve V-Neck T-Shirt

- 102761
- Relaxed Fit
 - Imported

Style #/Color
102761-001/Black
102761-100/White

F Lockhart Short-Sleeve V-Neck T-Shirt

- 102452
- Relaxed Fit
 - Imported

Style #/Color
102452-001/Black
102452-100/White

| XS | S | M | L | XL | XXL |
|----|---|---|---|----|-----|
| • | • | • | • | • | • |



INDUSTRIAL

FLAME-RESISTANT

HIGH-VISIBILITY

ADDITIONAL INFORMATION

THIS T-SHIRT WASN'T DESIGNED FOR A 1-HOUR WORKOUT, IT WAS MADE FOR A 12-HOUR WORKDAY

Carhartt Force® combines over 127 years of hands-on experience with hands down the toughest tech we ever fit in a T-shirt. Equipped with FastDry® sweat-wicking technology and the Stain Breaker® ability to release stains in the wash. Leaving you hard-pressed to find a harder working shirt out there.

MEN'S FORCE KNIT SHIRTS RELAXED FIT

5.75-ounce, 65% cotton/35% polyester plaited jersey knit. Raglan sleeves for increased range of motion and smooth flatlock seams for comfort. Left-chest pocket and comfortable tagless neck label.



| S | M | L | XL | 2XL | 3XL | 4XL | 5XL | |
|---|---|---|----|-----|-----|-----|-----|---------|
| • | • | • | • | • | • | • | • | REGULAR |
| • | • | • | • | • | • | • | • | TALL |



A Force Cotton Delmont Short-Sleeve T-Shirt

100410

- Imported

Style #/Color

- 100410-001/Black
- 100410-026/Carbon Heather
- 100410-412/Navy
- 100410-034/Heather Gray
- 100410-316/Moss

B Force Cotton Delmont Long-Sleeve T-Shirt

100393

- Imported

Style #/Color

- 100393-001/Black
- 100393-026/Carbon Heather
- 100393-412/Navy
- 100393-034/Heather Gray
- 100393-316/Moss





FORCE WOVEN SHIRTS RELAXED FIT

3-ounce, 60% polyester/40% cotton sheeting. Double-layer collar converts to stand-up collar for extra sun protection. Mesh-lined vent at center back for ventilation. Two easy-entry chest pockets

| | | | | |
|-----|-----|-----|-----|-----|
| 412 | 253 | 066 | 100 | 307 |
|-----|-----|-----|-----|-----|



A Force Ridgefield Solid Long-Sleeve Shirt

102418

- Secure left chest pocket with zipper closure
- Button secure convertible sleeves
- Imported

Style #/Color
102418-412/Navvy
102418-253/Dark Khaki
102418-066/Asphalt

| S | M | L | XL | 2XL | 3XL | 4XL | 5XL |
|---|---|---|----|-----|-----|-----|-----|
| • | • | • | • | • | • | • | • |

REGULAR



B Force Ridgefield Solid Short-Sleeve Shirt

102417

- Secure left chest pocket with zipper closure
- Imported

Style #/Color
102417-412/Navvy
102417-253/Dark Khaki
102417-066/Asphalt

| S | M | L | XL | 2XL | 3XL | 4XL | 5XL |
|---|---|---|----|-----|-----|-----|-----|
| • | • | • | • | • | • | • | • |

REGULAR



C Women's Force Ridgefield Shirt

102473

- Chest pockets with pen stall
- Long sleeves roll to three-quarter length with button-secured tabs
- Drop-tail hem for added coverage
- Imported

Style #/Color
102473-100/White
102473-307/Olive

| XS | S | M | L | XL | XXL |
|----|---|---|---|----|-----|
| • | • | • | • | • | • |

MEN'S & WOMEN'S CONTRACTOR'S WORK POLO

62% polyester/38% cotton pique colorfast knit with Stain Breaker® technology to release stains. Rib-knit, no-curl polo collar. Three-button front. Tagless neck label for comfort.



A Contractor's Work Pocket® Polo

K570

- Original fit
- Open, non-banded sleeves for increased range of motion
- Left-chest Contractor's Work Pocket® with unique silo for pens, pencils or tools
- Square bottom with side vents
- Imported

Style #/Color

K570-NVY/Navy

K570-BLK/Black

K570-MOS/Moss

K570-HGY/Heather Gray

K570-RED/Red

| S | M | L | XL | 2XL | 3XL | 4XL | 5XL |
|---|---|---|----|-----|-----|-----|-----|
| • | • | • | • | • | • | • | • |
| • | • | • | • | • | • | • | • |

REGULAR
TALL



A

B Women's Contractor's Short-Sleeve Work Polo

102460

- Slightly fitted
- Princess seams for a flattering fit
- Drop-tail hem for added coverage
- Imported

Style #/Color

102460-001/Black

102460-412/Navy

102460-034/Heather Gray

102460-316/Moss

| XS | S | M | L | XL | XXL |
|----|---|---|---|----|-----|
| • | • | • | • | • | • |

B





INDUSTRIAL

FLAME-RESISTANT

HIGH-VISIBILITY

ADDITIONAL INFORMATION

MEN'S SWEATSHIRTS

ORIGINAL FIT

50% cotton/50% polyester blend. With an attached three-piece hood and front hand warmer pockets. Rib-knit cuffs and waistband. Drawcord closure. Stretchable, spandex-reinforced cuffs and waistband.

BLK/001 472

| S | M | L | XL | 2XL | 3XL | 4XL | 5XL | |
|---|---|---|----|-----|-----|-----|-----|---------|
| • | • | • | • | • | • | • | • | REGULAR |
| • | • | • | • | • | • | • | • | TALL |



A Midweight Hooded Sweatshirt

- K121*
- 10.5-ounce
 - Imported

Style #/Color
K121-BLK/Black
K121-472/New Navy

B Midweight Hooded Zip Front Sweatshirt

- K122*
- 10.5-ounce
 - Full-length brass-front zipper
 - Imported

Style #/Color
K122-BLK/Black
K122-472/New Navy

C Rain Defender® Rutland Thermal-Lined Hooded Zip-Front Sweatshirt

- 100632*
- 12-ounce
 - Rain Defender® durable water repellent
 - Thermal-lined throughout
 - Full-length brass-front zipper
 - Inside pocket with zipper closure and locker loop
 - Imported

Style #/Color
100632-001/Black
100632-472/New Navy

WOMEN'S SWEATSHIRTS RELAXED FIT

The do-it-all sweatshirts designed for all those things the #CarharttWoman has to do. 10.5-ounce, 55% cotton/45% polyester. Attached three-piece hood, stretchable, spandex-reinforced cuffs and waistband.

412

058

| | | | | | |
|----|---|---|---|----|-----|
| XS | S | M | L | XL | XXL |
| • | • | • | • | • | • |



- A** **Women's Clarksburg Full-Zip Hoodie**
102788
- Zip-front
 - Front handwarmer pockets
 - Imported

Style #/Color
102788-412/Navvy
102788-058/Asphalt Heather

- B** **Women's Clarksburg Pullover Sweatshirt**
102790
- Pullover
 - Front pouch pocket
 - Imported

Style #/Color
102790-412/Navvy
102790-058/Asphalt Heather

MEN'S CANVAS BOTTOMS

7.5-ounce, 100% cotton ring-spun canvas. Sits slightly above the waist. Full seat and thigh. Left-leg hammer loop and right-leg utility band plus multiple tool and utility pockets. Stronger, sewn-on-the-seam belt loops and heavy hauling reinforced back pockets.



A Canvas Work Short

B147

- 10-inch inseam
- Imported

Style #/Color

B147-TAN/Tan

B147-BLK/Black

B147-NVY/Navy

WAIST

| | | | | | | | | | | | | | | |
|----|----|----|----|----|----|----|----|----|----|----|----|----|----|----|
| 28 | 29 | 30 | 31 | 32 | 33 | 34 | 36 | 38 | 40 | 42 | 44 | 46 | 48 | 50 |
| • | • | • | • | • | • | • | • | • | • | • | • | • | • | • |

B Canvas Work Dungaree

B151

- Loose Original Fit
- Straight leg opening
- Imported

Style #/Color

B151-TAN/Tan

B151-BLK/Black

B151-NVY/Navy

WAIST

| | | | | | | | | | | | | | | | | |
|--|----|----|----|----|----|----|----|----|----|----|----|----|----|----|----|----|
| | 28 | 29 | 30 | 31 | 32 | 33 | 34 | 35 | 36 | 38 | 40 | 42 | 44 | 46 | 48 | 50 |
|--|----|----|----|----|----|----|----|----|----|----|----|----|----|----|----|----|

INSEAM

| | | | | | | | | | | | | | | | | |
|----|--|--|---|---|---|---|---|---|---|---|---|---|---|---|---|---|
| 30 | | | • | • | • | • | • | • | • | • | • | • | • | • | • | • |
| 32 | | | • | • | • | • | • | • | • | • | • | • | • | • | • | • |
| 34 | | | • | • | • | • | • | • | • | • | • | • | • | • | • | • |
| 36 | | | | • | • | • | • | • | • | • | • | • | • | • | • | • |



INDUSTRIAL

FLAME-RESISTANT

HIGH-VISIBILITY

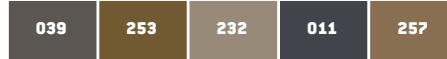
ADDITIONAL INFORMATION

TURN A RUGGED CORNER INTO A COMFORT ZONE

MEN'S AND WOMEN'S WORK SHORTS AND PANTS

8-ounce, 98% cotton/2% spandex canvas, Rugged Flex® durable stretch technology for ease of movement. Reinforced front slash pockets, triple-stitched main seams for durability, and a straight leg.

Made to move and stretch with you throughout the workday to make whatever you're doing easier to do. All Rugged Flex® gear meets our defined standards for stretch and recovery, so when you put these pants on you know they won't let you down.



A Rugged Flex® Rigby Dungaree

102291

- Relaxed Fit
- Sits at the waist, relaxed seat and thigh
- Right-leg secured cell phone pocket
- Imported

Style #/Color
102291-039/Gravel
102291-253/Dark Khaki

| | | WAIST | | | | | | | | | | | | | | |
|--------|----|-------|----|----|----|----|----|----|----|----|----|----|----|----|---|---|
| | | 28 | 29 | 30 | 31 | 32 | 33 | 34 | 35 | 36 | 38 | 40 | 42 | 44 | | |
| INSEAM | 30 | | | • | • | • | • | • | • | • | • | • | • | • | • | • |
| | 32 | | | • | • | • | • | • | • | • | • | • | • | • | • | • |
| | 34 | | | • | • | • | • | • | • | • | • | • | • | • | • | • |
| | 36 | | | • | • | • | • | • | • | • | • | • | • | • | • | • |

B Rugged Flex® Rigby Short 10"

102514

- Relaxed Fit
- Sits at the waist, relaxed seat and thigh
- Right-leg secured cell phone pocket
- 10-inch inseam
- Imported

Style #/Color
102514-039/Gravel
102514-232/Tan

| | | WAIST | | | | | | | | | | | | | | |
|--------|----|-------|----|----|----|----|----|----|----|----|----|----|----|----|----|----|
| | | 28 | 29 | 30 | 31 | 32 | 33 | 34 | 36 | 38 | 40 | 42 | 44 | 46 | 48 | 50 |
| INSEAM | 30 | | | • | • | • | • | • | • | • | • | • | • | • | • | • |

C Women's Crawford Pant

102080

- Original Fit
- Mid-rise, sits slightly below the waist
- Slightly fitted through the hip and thigh
- Contoured waistband prevents gapping in the back
- Utility pockets and hammer loop
- Imported

Style #/Color
102080-011/Coal
102080-257/Yukon

| | | INSEAM | | | | | | | | |
|--------|------------|--------|---|---|---|----|----|----|----|----|
| | | 2 | 4 | 6 | 8 | 10 | 12 | 14 | 16 | 18 |
| INSEAM | SHORT 30 | | | • | • | • | • | • | • | • |
| | REGULAR 32 | | | • | • | • | • | • | • | • |
| | TALL 34 | | | • | • | • | • | • | • | • |

12-ounce, 100% cotton ring-spun washed duck. Multiple tool and utility pockets, heavy-hauling reinforced back pockets, and a straight leg.



A Washed Duck Double-Front Work Dungaree

- B136**
- Loose Original Fit
 - Sits slightly above the waist
 - Full seat and thigh
 - Double-front with cleanout openings that accommodate kneepads
 - Imported

Style #/Color
 B136-BRN/Carhartt Brown
 B136-DKB/Dark Brown
 B136-BLK/Black
 B136-GVL/Gravel

| INSEAM | WAIST | | | | | | | | | | | | | |
|--------|-------|----|----|----|----|----|----|----|----|----|----|----|----|--|
| | 28 | 29 | 30 | 31 | 32 | 33 | 34 | 35 | 36 | 38 | 40 | 42 | 44 | |
| 30 | | | | | | | | | | | | | | |
| 32 | | | | | | | | | | | | | | |
| 34 | | | | | | | | | | | | | | |
| 36 | | | | | | | | | | | | | | |

B Washed Duck Work Dungaree

- B11**
- Loose Original Fit
 - Sits slightly above the waist
 - Full seat and thigh
 - Imported

Style #/Color
 B11-BRN/Carhartt Brown
 B11-BLK/Black
 B11-MDT/Midnight
 B11-DES/Desert

| INSEAM | WAIST | | | | | | | | | | | | | | | | | |
|--------|-------|----|----|----|----|----|----|----|----|----|----|----|----|----|----|----|----|----|
| | 28 | 29 | 30 | 31 | 32 | 33 | 34 | 35 | 36 | 38 | 40 | 42 | 44 | 46 | 48 | 50 | 52 | 54 |
| 30 | | | | | | | | | | | | | | | | | | |
| 32 | | | | | | | | | | | | | | | | | | |
| 34 | | | | | | | | | | | | | | | | | | |
| 36 | | | | | | | | | | | | | | | | | | |

DENIM BOTTOMS

12-ounce, 86% cotton/14% polyester denim.

Ounce-for-ounce as durable as 15-ounce denim

968 420



A Relaxed-Fit Holter Jean
101483

- Sits at the waist
- Relaxed seat and thigh
- Straight leg opening
- Imported

Style #/Color
101483-968/Bedrock

WAIST

| | | | | | | | | | | | | | | |
|--------|----|----|----|----|----|----|----|----|----|----|----|----|----|----|
| | 28 | 29 | 30 | 31 | 32 | 33 | 34 | 35 | 36 | 38 | 40 | 42 | 44 | 46 |
| INSEAM | | | | | | | | | | | | | | |
| 30 | | | | | | | | | | | | | | |
| 32 | | | | | | | | | | | | | | |
| 34 | | | | | | | | | | | | | | |
| 36 | | | | | | | | | | | | | | |

B Straight/Traditional-Fit Elton Jean
101496

- Sits at the waist
- Slim seat and thigh
- Straight leg opening
- Imported

Style #/Color
101496-420/Trailblazer

WAIST

| | | | | | | | | | | | | | | |
|--------|----|----|----|----|----|----|----|----|----|----|----|----|----|----|
| | 28 | 29 | 30 | 31 | 32 | 33 | 34 | 35 | 36 | 38 | 40 | 42 | 44 | 46 |
| INSEAM | | | | | | | | | | | | | | |
| 30 | | | | | | | | | | | | | | |
| 32 | | | | | | | | | | | | | | |
| 34 | | | | | | | | | | | | | | |
| 36 | | | | | | | | | | | | | | |

100% COTTON DENIM JEANS

Made with 100% cotton for the most comfortable, durable denim.



C Loose/Original-Fit Work Dungaree

B13

- 11.75-ounce, 100% cotton washed denim
- Sits slightly above the waist
- Full seat and thigh
- Multiple tool and utility pockets
- Left-leg hammer loop
- Heavy-hauling reinforced back pockets
- Straight leg opening
- Imported

Style #/Color

B13-DPS/Deepstone

B13-DST/Darkstone

B13-STW/Stonewash

WAIST

| | 28 | 29 | 30 | 31 | 32 | 33 | 34 | 35 | 36 | 38 | 40 | 42 | 44 | 46 | 48 | 50 | 52 | 54 |
|-----------|----|----|----|----|----|----|----|----|----|----|----|----|----|----|----|----|----|----|
| INSEAM 28 | | | | | | | | | | | | | | | | | | |
| 30 | | | | | | | | | | | | | | | | | | |
| 32 | | | | | | | | | | | | | | | | | | |
| 34 | | | | | | | | | | | | | | | | | | |
| 36 | | | | | | | | | | | | | | | | | | |

D Relaxed-Fit Tapered-Leg Jean

B17

- 15-ounce, 100% cotton denim
- Sits above the waist
- Relaxed seat and thigh
- Tapered leg opening
- Imported

Style #/Color

B17-DST/Darkstone

B17-STW/Stonewash

WAIST

| | 28 | 29 | 30 | 31 | 32 | 33 | 34 | 35 | 36 | 38 | 40 | 42 | 44 | 46 | 48 | 50 | 52 | 54 |
|-----------|----|----|----|----|----|----|----|----|----|----|----|----|----|----|----|----|----|----|
| INSEAM 28 | | | | | | | | | | | | | | | | | | |
| 30 | | | | | | | | | | | | | | | | | | |
| 32 | | | | | | | | | | | | | | | | | | |
| 34 | | | | | | | | | | | | | | | | | | |
| 36 | | | | | | | | | | | | | | | | | | |
| 38 | | | | | | | | | | | | | | | | | | |

DUCK OUTERWEAR

12-ounce, firm-hand, 100% ring-spun cotton duck.
Triple-stitched main seams for durability.



A Duck Detroit Jacket

J001

- Blanket-lining in body, quilted-nylon lining in sleeves
- Corduroy-trimmed collar with under-collar snaps for optional hood
- Left-chest pocket with zipper closure
- Inside pocket
- Two lower-front pockets
- Snap-adjustable cuffs and waist
- Pleated bi-swing back for ease of movement
- Back length: Large Regular: 26.25 inches; Large Tall: 28.25 inches
- Made in the USA of US and Imported parts

Style #/Color
J001-BRN/Carhartt Brown
J001-BLK/Black

| S | M | L | XL | 2XL | 3XL | 4XL | 5XL | |
|---|---|---|----|-----|-----|-----|-----|---------|
| • | • | • | • | • | • | • | • | REGULAR |
| • | • | • | • | • | • | • | • | TALL |



B Quilted-Flannel-Lined Duck Active Jac

J140

- Quilted-flannel lining in body, quilted-nylon lining in sleeves
- Attached quilted-flannel-lined hood with drawcord closure
- Two inside pockets
- Two large lower-front pockets
- Rib-knit cuffs and waistband
- Back length: Large Regular: 29 inches; Large Tall: 31 inches
- Made in the USA of US and Imported parts

Style #/Color
J140-BRN/Carhartt Brown
J140-BLK/Black

| S | M | L | XL | 2XL | 3XL | 4XL | 5XL | 6XL | |
|---|---|---|----|-----|-----|-----|-----|-----|---------|
| • | • | • | • | • | • | • | • | • | REGULAR |
| • | • | • | • | • | • | • | • | • | TALL |

J140-DNY/Dark Navy

| S | M | L | XL | 2XL | 3XL | 4XL | 5XL | 6XL | |
|---|---|---|----|-----|-----|-----|-----|-----|---------|
| • | • | • | • | • | • | • | • | • | REGULAR |
| • | • | • | • | • | • | • | • | • | TALL |



C Thermal-Lined Duck Active Jac

J131

- Polyester thermal lining
- Attached thermal-lined hood with drawcord closure
- Two inside pockets
- Two large, lower-front pockets
- Rib-knit cuffs and waistband
- Back length: Large Regular: 29 inches; Large Tall: 31 inches
- Made in the USA

Style #/Color
J131-BRN/Carhartt Brown
J131-BLK/Black

| S | M | L | XL | 2XL | 3XL | 4XL | 5XL | 6XL | |
|---|---|---|----|-----|-----|-----|-----|-----|---------|
| • | • | • | • | • | • | • | • | • | REGULAR |
| • | • | • | • | • | • | • | • | • | TALL |

J131DNY/Dark Navy

| S | M | L | XL | 2XL | 3XL | 4XL | 5XL | 6XL | |
|---|---|---|----|-----|-----|-----|-----|-----|---------|
| • | • | • | • | • | • | • | • | • | REGULAR |
| • | • | • | • | • | • | • | • | • | TALL |

D Duck Bib Overalls-Unlined

- R01*
- Adjustable front, elastic suspenders
 - Multi-compartment bib pocket
 - Zipper fly
 - Two large, lower-front pockets
 - Left leg hammer loops and ruler pockets
 - Double-front construction with cleanout bottoms that can accommodate kneepads
 - Two reinforced back pockets
 - Metal rivets at vital stress points
 - Imported

Style #/Color
 R01-BRN/Carhartt Brown
 R01-DNY/Dark Navy

| | | | | | | | | | | | | | | | | | |
|--------|----|----|----|----|----|----|----|----|----|----|----|----|----|----|----|----|----|
| | 28 | 30 | 32 | 34 | 36 | 38 | 40 | 42 | 44 | 46 | 48 | 50 | 52 | 54 | 56 | 58 | 60 |
| INSEAM | 28 | • | • | • | • | • | • | • | • | • | • | • | • | • | • | • | • |
| | 30 | • | • | • | • | • | • | • | • | • | • | • | • | • | • | • | • |
| | 32 | • | • | • | • | • | • | • | • | • | • | • | • | • | • | • | • |
| | 34 | • | • | • | • | • | • | • | • | • | • | • | • | • | • | • | • |
| | 36 | • | • | • | • | • | • | • | • | • | • | • | • | • | • | • | • |

R01-BLK/Black

| | | | | | | | | | | | | | | |
|--------|----|----|----|----|----|----|----|----|----|----|----|----|----|----|
| | 28 | 30 | 32 | 34 | 36 | 38 | 40 | 42 | 44 | 46 | 48 | 50 | 52 | 54 |
| INSEAM | 28 | • | • | • | • | • | • | • | • | • | • | • | • | • |
| | 30 | • | • | • | • | • | • | • | • | • | • | • | • | • |
| | 32 | • | • | • | • | • | • | • | • | • | • | • | • | • |
| | 34 | • | • | • | • | • | • | • | • | • | • | • | • | • |
| | 36 | • | • | • | • | • | • | • | • | • | • | • | • | • |



E Duck Quilt-Lined Zip-To-Thigh Bib Overalls

- R41*
- Nylon lining quilted to midweight polyester insulation
 - Adjustable front, elastic suspenders
 - Multi-compartment bib pocket with zipper closure
 - Zipper fly
 - Two large, lower-front pockets
 - Hammer loops on left and right legs
 - Chap-style double front construction
 - Double-front knees with cleanout bottoms that can accommodate kneepads
 - Ankle-to-thigh leg zippers with storm flaps and snap closures
 - Cordura® back-leg kick panels
 - Two reinforced back pockets
 - Triple-stitched main seams
 - Metal rivets at vital stress points
 - Imported

Style #/Color
 R41-BLK/Black
 R41-BRN/Carhartt Brown

| | | | | | | | | | | | | | | | |
|--------|----|----|----|----|----|----|----|----|----|----|----|----|----|----|----|
| | 30 | 32 | 34 | 36 | 38 | 40 | 42 | 44 | 46 | 48 | 50 | 52 | 54 | 56 | 58 |
| INSEAM | 28 | • | • | • | • | • | • | • | • | • | • | • | • | • | • |
| | 30 | • | • | • | • | • | • | • | • | • | • | • | • | • | • |
| | 32 | • | • | • | • | • | • | • | • | • | • | • | • | • | • |
| | 34 | • | • | • | • | • | • | • | • | • | • | • | • | • | • |
| | 36 | • | • | • | • | • | • | • | • | • | • | • | • | • | • |

R41-DNY/Dark Navy

| | | | | | | | | | | | | |
|--------|----|----|----|----|----|----|----|----|----|----|----|----|
| | 32 | 34 | 36 | 38 | 40 | 42 | 44 | 46 | 48 | 50 | 52 | 54 |
| INSEAM | 30 | • | • | • | • | • | • | • | • | • | • | • |
| | 32 | • | • | • | • | • | • | • | • | • | • | • |
| | 34 | • | • | • | • | • | • | • | • | • | • | • |

F Duck Traditional Coat

- C003*
- Nylon lining quilted to arctic-weight polyester insulation
 - Corduroy-trimmed collar with under-collar snaps for optional hood
 - Two-way brass center-front storm zipper plus storm flap with hook-and-loop closure
 - Two inside pockets
 - Two large, lower-front pockets
 - Pleated elbows
 - Inner sleeve, rib-knit storm cuffs
 - Split-back construction
 - Pleated bi-swing back for ease of movement
 - Back length: Large Regular: 31.25 inches; Large Tall: 33.25 inches
 - Imported

Style #/Color
 C003-BLK/Black
 C003-BRN/Carhartt Brown
 C003-DNY/Dark Navy

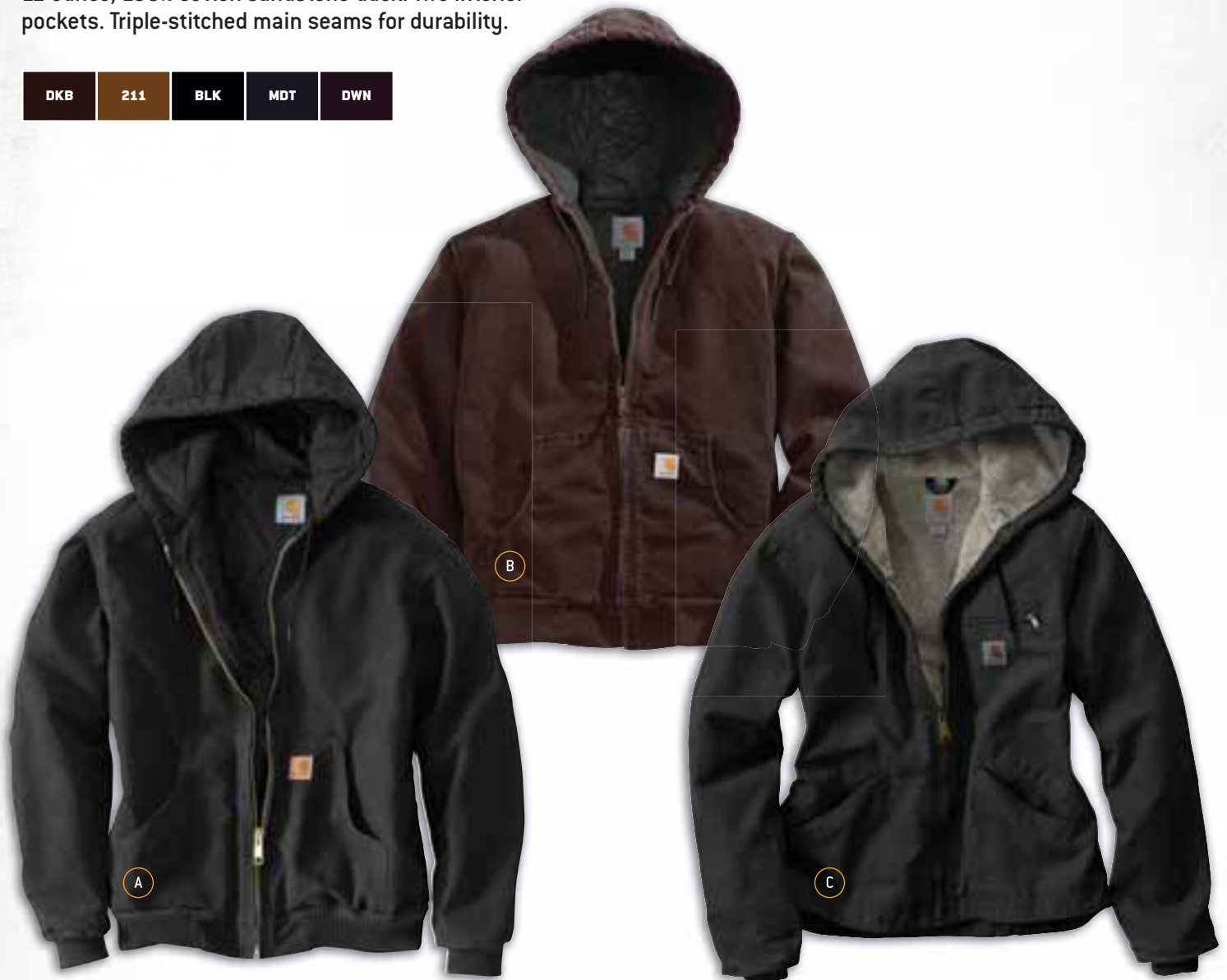
| | | | | | | | | |
|--|---|---|---|----|-----|-----|-----|-----|
| | S | M | L | XL | 2XL | 3XL | 4XL | 5XL |
| | • | • | • | • | • | • | • | • |
| | • | • | • | • | • | • | • | • |
| | • | • | • | • | • | • | • | • |

REGULAR
TALL



MEN'S AND WOMEN'S OUTERWEAR

12-ounce, 100% cotton sandstone duck. Two interior pockets. Triple-stitched main seams for durability.



A Quilted-Flannel-Lined Sandstone Active Jac

J130

- Quilted-flannel lining in body, quilted-nylon lining in sleeves
- Attached quilted-flannel lined hood with drawcord closure
- Two interior pockets
- Two large, lower-front pockets
- Rib-knit cuffs and waistband
- Back length: Large Regular: 28 inches; Large Tall: 30 inches
- Imported

Style #/Color
 J130-211/Carhartt Brown
 J130-BLK/Black
 J130-MDT/Midnight

| S | M | L | XL | 2XL | 3XL | 4XL | 5XL | 6XL | |
|---|---|---|----|-----|-----|-----|-----|-----|---------|
| • | • | • | • | • | • | • | • | • | REGULAR |
| • | • | • | • | • | • | • | • | • | TALL |

B Women's Sandstone Active Jac

WJ130

- Quilted-flannel lining in body, quilted-nylon lining in sleeves
- Attached quilted-flannel lined hood with drawcord closure
- Two interior pockets
- Two large, lower-front pockets
- Rib-knit cuffs and waistband
- Imported

Style #/Color
 WJ130-DKB/Dark Brown

| XS | S | M | L | XL | XXL |
|----|---|---|---|----|-----|
| • | • | • | • | • | • |

C Women's Sandstone Sierra Jacket

WJ141

- Sherpa-lining in body and quilted-nylon lining in sleeves
- Attached three-piece hood
- Bi-swing back for ease of movement
- Chest map pocket
- Two interior pockets
- Two lower-front pockets
- Back length: 26.75 inches with drop tail for added coverage
- Imported

Style #/Color
 WJ141-BLK/Black
 WJ141-DWN/Deep Wine

| XS | S | M | L | XL | XXL |
|----|---|---|---|----|-----|
| • | • | • | • | • | • |



D Women's Sandstone Mock Neck Vest

WV001

- Sherpa lining
- Zipper-secured chest map pocket
- Two lower-front pockets and two interior pockets
- Drop tail adds coverage
- Back length: 25 inches
- Imported

Style #/Color
WV001-DKB/Dark Brown

| XS | S | M | L | XL | XXL |
|----|---|---|---|----|-----|
| • | • | • | • | • | • |



E Sandstone Mock Neck Vest

V33

- Sherpa lining
- Map pocket on left-chest with zipper closure
- Two large, sherpa-lined front pockets and two interior pockets
- Drop tail
- Back length:
Large Regular: 27.25 inches;
Large Tall: 29.25 inches
- Imported

Style #/Color
V33-DKB/Dark Brown
V33-211/Carhartt Brown

| S | M | L | XL | 2XL | 3XL | 4XL | 5XL | 6XL | |
|---|---|---|----|-----|-----|-----|-----|-----|---------|
| • | • | • | • | • | • | • | • | • | REGULAR |
| • | • | • | • | • | • | • | • | • | TALL |

OUTERWEAR

12-ounce, 100% cotton sandstone duck. Triple-stitched main seams for durability.



A Sandstone Ridge Coat

C61

- Sherpa lining in body, quilted-nylon lining in sleeves
- Two-way center front zipper with inner and outer storm flap and snap closure
- Corduroy-trimmed collar with under-collar snaps for optional hood
- Left-chest pocket with zipper closure
- Two lower-front pockets
- Two inside pockets
- Pleated elbows
- Inner-sleeve, rib-knit storm cuffs
- Split-back construction
- Pleated bi-swing back for ease of movement
- Back length: Large Regular: 32.5 inches; Large Tall: 34.5 inches
- Imported

Style #/Color
C61-DKB/Dark Brown
C61-BLK/Black

| S | M | L | XL | 2XL | 3XL | 4XL | 5XL | 6XL | |
|---|---|---|----|-----|-----|-----|-----|-----|---------|
| • | • | • | • | • | • | • | • | • | REGULAR |
| • | • | • | • | • | • | • | • | • | TALL |



B Sandstone Quilt-Lined Bib Overalls

R27

- Nylon lining quilted to midweight polyester insulation
- Adjustable front, elastic suspenders
- Multi-compartment bib pocket
- Zipper fly
- Two large, lower-front pockets
- Left-leg hammer loop
- Double-front knee construction with cleanout bottoms that accommodate kneepads
- Ankle-to-knee leg zippers with storm flaps
- Two reinforced back pockets
- Metal rivets at vital stress points
- Imported

Style #/Color

R27-211/Carhartt Brown

R27-BLK/Black

| | | | | | | | | | | |
|--------|----|----|----|----|----|----|----|----|----|----|
| | 32 | 34 | 36 | 38 | 40 | 42 | 44 | 46 | 48 | 50 |
| INSEAM | 28 | • | • | • | • | • | • | • | • | • |
| | 30 | • | • | • | • | • | • | • | • | • |
| | 32 | • | • | • | • | • | • | • | • | • |
| | 34 | • | • | • | • | • | • | • | • | • |

C Women's Weathered Duck Wildwood Bib Overalls

102743

- Nylon quilted lining
- Adjustable, front elastic suspenders
- Two secure front pockets
- Two lower front double pockets
- Double front knee construction that accommodates knee pads
- Ankle-to-hip leg zippers with storm flaps
- Two reinforced back pockets
- Imported

Style #/Color

102743-201/Dark Brown

| | | | | | | | |
|--------|---------------|----|---|---|---|----|-----|
| | | XS | S | M | L | XL | XXL |
| INSEAM | SHORT 30 | • | • | • | • | • | • |
| | REGULAR 32 | • | • | • | • | • | • |
| | TALL 34 | • | • | • | • | • | • |



WATER REPELLENT OUTERWEAR

001

022

412

908



A



B

A Crowley Jacket

102199

- 13.9-ounce, 90% nylon/10% spandex with 100% polyester backing
- Rain Defender® durable water repellent
- Wind Fighter® technology tames the wind
- Rugged Flex® technology for ease of movement
- Mock-neck collar and center-front zipper with chin protector
- Left-chest pocket, two lower-front pockets with zipper closures, and large interior document pocket
- Hook-and-loop adjustable cuffs
- Adjustable drawcord bottom hem with drop tail
- Triple-stitched main seams for durability
- Back Length: Large Regular: 29 inches; Large Tall: 31 inches
- Imported

Style #/Color

102199-001/Black

102199-022/Charcoal

102199-412/Navvy

| S | M | L | XL | 2XL | 3XL | 4XL | 5XL | |
|---|---|---|----|-----|-----|-----|-----|---------|
| • | • | • | • | • | • | • | • | REGULAR |
| • | • | • | • | • | • | • | • | TALL |

B Quick Duck® Jefferson Traditional Jacket

101492

- 8.5-ounce, 60% cotton/40% polyester canvas
- Rain Defender® durable water repellent
- 30% lighter but ounce-for-ounce as durable as sandstone duck
- Nylon lining quilted to 80g 3M™ Thinsulate™ insulation in the body and sleeves
- Two-way, center-front zipper with inner storm flap and mock-neck collar with zip-through zipper
- Two chest pockets with snaps and flap closures, two large, lower-front pockets, and two inside pockets: one with zipper closure and one with hook-and-loop closure
- Pleated elbows
- Internal rib-knit storm cuffs with ergonomic shaped sleeve hem
- Adjustable hem opening with drop tail
- Pleated bi-swing back for ease of movement
- Triple-stitched main seams for durability
- Back Length: Large Regular: 30 inches; Large Tall: 32 inches
- Imported

Style #/Color

101492-001/Black

101492-908/Canyon Brown

101492-412/Navvy

| S | M | L | XL | 2XL | 3XL | 4XL | 5XL | |
|---|---|---|----|-----|-----|-----|-----|---------|
| • | • | • | • | • | • | • | • | REGULAR |
| • | • | • | • | • | • | • | • | TALL |

SHORELINE SERIES

100% nylon oxford shell with Storm Defender® waterproof breathable membrane and fully taped waterproof seams. 100% polyester mesh lining in body and 100% nylon taffeta lining in jacket sleeves, from knee down in pant. Triple-stitched main seams for durability.



C Shoreline Jacket

J162

- 7.3 – ounce, 100% nylon with Storm Defender® waterproof breathable membrane plus fully taped waterproof seams
- 100% polyester mesh lining in body and 100% taffeta lining in sleeves
- Detachable three-piece hood with draw cord adjuster
- Heavy duty front zipper with outer and inner storm flaps
- Two lower front pockets with closures and two interior pockets
- Angled cuff opening with interior storm cuff
- Back length: Large Regular - 29 inches, Large Tall - 31 inches
- Imported

Style #/Color
J162-001/Black

| S | M | L | XL | 2XL | 3XL | 4XL | 5XL | |
|---|---|---|----|-----|-----|-----|-----|---------|
| • | • | • | • | • | • | • | • | REGULAR |
| • | • | • | • | • | • | • | • | TALL |

D Women's Shoreline Jacket

102382

- 4.8-ounce, 100% nylon with Storm Defender® waterproof breathable membrane plus fully taped waterproof seams
- 100% polyester mesh lining in body and 100% nylon taffeta lining in sleeves
- Detachable three-piece hood with drawcord and barrel lock adjusters
- Two-way zipper with snap-front storm placket
- Two front pockets with zipper closures, two lower-front pockets with flaps and snaps, zipper-secured side entry and two interior pockets
- Articulated elbows
- Hook-and-loop adjustable cuffs and interior storm cuffs with thumbholes
- Adjustable drop-tail hem with drawcord and barrel lock adjusters
- Back length: 31.5 inches
- Imported

Style #/Color
102382-001/Black/Asphalt lining

| XS | S | M | L | XL | XXL |
|----|---|---|---|----|-----|
| • | • | • | • | • | • |

E Shoreline Pant

B216

- 7.3 – ounce, 100% nylon with Storm Defender® waterproof breathable membrane plus fully taped waterproof seams
- 100% polyester mesh lining, taffeta from knee down
- Elastic waistband with hook-and-loop side adjusters
- Chap style double front construction with cleanout openings to accommodate knee pads
- Ankle to waist two-way leg zippers with double storm flaps
- Snap adjustable leg openings
- Inseam: Large Regular – 31 inches, Large Tall – 33 inches

Style #/Color
B216-001/Black

| S | M | L | XL | 2XL | 3XL | 4XL | 5XL | |
|---|---|---|----|-----|-----|-----|-----|---------|
| • | • | • | • | • | • | • | • | REGULAR |
| • | • | • | • | • | • | • | • | TALL |

INDUSTRIAL

FLAME-RESISTANT

HIGH-VISIBILITY

ADDITIONAL INFORMATION

ACCESSORIES

Complement your Carhartt workwear with the rugged hats, liners, and hoods. One size fits all.

| | | | | |
|------------|------------|------------|-----|------------|
| BLM 323 | BOG 824 | BLK 001 | CHH | BRN 211 |
| DKB 201 | WWH | NVY | 410 | |



A Color Enhanced Fleece 2-in-1 Hat
100795

- 100% polyester
- Fleece hat with pull-down face mask for warmth
- Carhartt logo sewn on front
- Imported

Style #/Color
100795-323/Brite Lime
100795-824/Brite Orange

B Face Mask
A161

- 100% acrylic stretchable rib-knit fabric
- Thinsulate™ Flex 40g insulation for warmth
- Extra-long neck enhances cold weather protection
- Carhartt label sewn on front
- Made in the USA of US and Imported parts

Style #/Color
A161-BRN/Carhartt Brown
A161-BLK/Black
A161-BOG/Brite Orange
A161-BLM/Brite Lime
A161-CHH/Charcoal Heather

C Fleece 2-in-1 Headwear
A202

- Hat: 100% polyester/Pull-down face mask: 90% polyester/10% spandex
- Fleece hat with pull-down face mask for warmth
- Mask can be tucked up into hat when not in use
- Carhartt label sewn on front
- Face mask is moisture wicking and fights odors
- Imported

Style #/Color
A202-BLK/Black
A202-DKB/Dark Brown
A202-CHH/Charcoal Heather

D Force® Helmet-Liner Mask
A267

- 92% polyester/8% spandex blend with fleeced interior for comfort and warmth
- Carhartt Force® fabric with FastDry® technology that wicks away sweat for comfort
- Fights odors
- Full facial protection that extends below the neckline
- Face mask pulls down below the chin when not needed
- Flat-seam construction enhances comfort
- Carhartt logo printed on front/Carhartt Force® logo printed on back
- Imported

Style #/Color
A267-NVY/Navy
A267-BLK/Black
A267-BOG/Brite Orange
A267-BLM/Brite Lime



E Women's Acrylic Watch Hat

WA018

- 100% acrylic, stretchable rib-knit
- Carhartt label sewn on front
- Made in the USA of US and imported parts

Style #/Color
WA018-WWH/Winter White Heather



F Acrylic Watch Cap

A18

- 100% acrylic, stretchable rib-knit
- Carhartt label sewn on front
- Made in the USA of US and imported parts

Style #/Color
A18-BRN/Carhartt Brown
A18-DKB/Dark Brown
A18-BLK/Black
A18-NVY//Navy
A18-B0G/Brite Orange
A18-BLM/Brite Lime

G Arctic-Quilt-Lined Duck Hood

102368

- 12-ounce, firm-hand, 100% ring-spun cotton duck
- Nylon lining quilted to arctic-weight polyester insulation
- Hook-and-loop chin strap closure
- Hook-and-loop adjustable front opening
- Adjustable drawcord with cord lock
- Three-piece hood construction
- Triple-stitched main seams for durability
- Imported

Style #/Color
102368-211/Brown
102368-001/Black
102368-410/Dark Navy

Sizes: S/XL and 2XL/5XL

H Arctic-Quilt-Lined Sandstone Hood

102367

- 12-ounce, 100% cotton sandstone duck
- Nylon lining quilted to arctic-weight polyester
- Hook-and-loop chin strap closure
- Hook-and-loop adjustable front opening
- Adjustable drawcord with cord lock
- Three-piece hood construction
- Triple-stitched main seams for durability
- Imported

Style #/Color
102367-001/Black
102367-201/Dark Brown

Sizes: S/XL and 2XL/5XL





INDUSTRIAL

FLAME-RESISTANT

HIGH-VISIBILITY

ADDITIONAL INFORMATION

FLAME-RESISTANT

MOVES, BENDS, STRETCHES, AND AVOIDS GETTING BURNED

In 1889, Hamilton Carhartt began making clothes by studying those who toiled in the harshest conditions. Today, the commitment to understanding the workingman and woman's every move lives on in every stitch and seam of our Flame-Resistant

Full Swing® gear. Engineered with the improved movability, flexibility, and safety requirements needed to keep up with the unapologetic demands of working in today's rugged corners.



| |
|----------------------|
| CAT 3 |
| ATPV [CAL/CM²] 36 |

A **FR Full Swing®
Quick Duck® Coat**
102182

- Two chest pockets with flaps and snap closures
- Two lower-front pockets with snap closures
- Imported

Style #/Color
102182-410/Dark Navy
102182-211/Carhartt Brown

| S | M | L | XL | 2XL | 3XL | 4XL | 5XL | |
|---|---|---|----|-----|-----|-----|-----|---------|
| • | • | • | • | • | • | • | • | REGULAR |
| • | • | • | • | • | • | • | • | TALL |

| | | |
|----------------------|---------------------|--|
| Lined | Unlined | NEW AVAILABLE JULY 2017 |
| CAT 3 | CAT 2 | |
| ATPV [CAL/CM²] 36 | ATPV [CAL/CM²] 9 | |

B **FR Quick Duck® Bib
Overall / Quilt Lined**
102691

- Bib multi-pocket with zipper closure
- Multiple tool and utility pockets
- Chap-style double-front
- Ankle-to-above knee brass leg zippers
- Imported

Style #/Color
102691-410/Dark Navy
102691-211/Carhartt Brown

| INSEAM | WAIST | | | | | | | | | | | | |
|--------|-------|----|----|----|----|----|----|----|----|----|----|----|----|
| | 30 | 32 | 34 | 36 | 38 | 40 | 42 | 44 | 46 | 48 | 50 | 52 | 54 |
| 28 | • | • | • | • | • | • | • | • | • | • | • | • | • |
| 30 | • | • | • | • | • | • | • | • | • | • | • | • | • |
| 32 | • | • | • | • | • | • | • | • | • | • | • | • | • |
| 34 | • | • | • | • | • | • | • | • | • | • | • | • | • |
| 36 | • | • | • | • | • | • | • | • | • | • | • | • | • |

FULL SWING® OUTERWEAR + FR

Carhartt FR Full Swing® Quick Duck® jackets and coats with Rain Defender® water repellent are built using 8.5-ounce, cotton/nylon blend to be 20% lighter but just as warm as our heavier outerwear. Insulated with 150g 3M™ Thinsulate™ Platinum Insulation FR (102182, 102691, 102692). Stand-up collar (102182 and 102692) for an optional detachable hood (102183). Plus, two inside patch pockets with FR hook-and-loop closures and an upper-arm pocket on the left sleeve.



MADE WITH
3M THINSULATE[™]
Insulation / Isolant

FLAME RESISTANT
RETARDATEUR DE FLAMME

INDUSTRIAL

FLAME-RESISTANT

HIGH-VISIBILITY

ADDITIONAL INFORMATION

CAT 2
ATPV (CAL/CM²)
14

C FR Full Swing® Quick Duck® Jacket

- 102179
- 7-ounce, FR twill lining
 - Left-chest map pocket with zipper closure
 - Two lower-front pockets with zipper closures
 - Imported

Style #/Color
102179-410/Dark Navy
102179-211/Carhartt Brown

CAT 3
ATPV (CAL/CM²)
36

NEW
AVAILABLE
JULY 2017

D FR Full Swing® Quick Duck® Lanyard Access Jacket

- 102692
- Harness D-ring access port with flap on center back (*inset photo*)
 - Left-chest map pocket with zipper closure
 - Two lower-front pockets
 - Imported

Style #/Color
102692-410/Dark Navy
102692-211/Carhartt Brown

| S | M | L | XL | 2XL | 3XL | 4XL | 5XL | |
|---|---|---|----|-----|-----|-----|-----|---------|
| • | • | • | • | • | • | • | • | REGULAR |
| • | • | • | • | • | • | • | • | TALL |

CAT 3
ATPV (CAL/CM²)
36

E FR Quick Duck® Hood

- 102183
- Three-piece hood design for better fit
 - Adjustable Nomex® FR drawcord with secure nylon draw-cord lock
 - NFPA 70E compliant only
 - Compatible to snap onto: 102182, 102692
 - Imported

Style #/Color
102183-410/Dark Navy
102183-211/Carhartt Brown

ONE SIZE FITS ALL



FR CANVAS

Midweight 8.5-ounce FR canvas built using 88% cotton/12% high-tenacity nylon. Brass front zipper with Nomex FR zipper tape plus inside and outside protective flaps with hook-and-loop closure for electric-arc protection. Two inside patch pockets with FR hook-and-loop closures



CAT 3
ATPV (CAL/CM²)
34

A FR Lanyard Access Jacket / Quilt-Lined

101625

- Adjustable storm cuffs
- Lanyard access for safety harness
- Imported

Style #/Color

101625-410/Dark Navy

101625-211/Carhartt Brown

| S | M | L | XL | 2XL | 3XL | 4XL | 5XL | |
|---|---|---|----|-----|-----|-----|-----|---------|
| • | • | • | • | • | • | • | • | REGULAR |
| • | • | • | • | • | • | • | • | TALL |

CAT 3
ATPV (CAL/CM²)
33

B FR Midweight Canvas Hood / Quilt-Lined

FRA002

- 8.5-ounce, FR canvas: 88% cotton/12% high-tenacity nylon + 8.75-ounce FR quilt lining: FR modacrylic batting
- Chin protector with FR hook-and-loop closure
- Adjustable Nomex® FR drawcord
- Arc-resistant snaps for attachment to FR outerwear only
- 2-ply construction for comfort and warmth
- NFPA 70E compliant only
- Compatible with:
101625 FR Lanyard Access Jacket
- Imported

Style #/Color

FRA002-BRN/Carhartt Brown

FRA002-DNY/Dark Navy

ONE SIZE FITS ALL





CAT 3
ATPV [CAL/CM²]
34

C FR Midweight Canvas Active Jac / Quilt-Lined

101622

- Attached quilt-lined hood with adjustable Nomex FR drawcord
- Nomex® rib-knit cuffs and waistband
- Imported

Style #/Color

101622-410/Dark Navy
101622-211/Carhartt Brown

| S | M | L | XL | 2XL | 3XL | 4XL | 5XL | |
|---|---|---|----|-----|-----|-----|-----|---------|
| • | • | • | • | • | • | • | • | REGULAR |
| • | • | • | • | • | • | • | • | TALL |



CAT 4
ATPV [CAL/CM²]
43

D FR Mock Neck Vest

101029

- FR sherpa lining
- Drop tail
- Imported

Style #/Color

101029-410/Dark Navy
101029-211/Carhartt Brown

| S | M | L | XL | 2XL | 3XL | 4XL | 5XL | |
|---|---|---|----|-----|-----|-----|-----|---------|
| • | • | • | • | • | • | • | • | REGULAR |
| • | • | • | • | • | • | • | • | TALL |

FR DUCK OUTERWEAR

Heavyweight 13-ounce, 100% cotton FR duck with 11.5-ounce quilt lining: FR modacrylic batting quilted to FR twill face cloth. Two-way brass zipper with Nomex FR zipper tape plus inside and outside protective flaps with hook-and-ladder loop closure for electric-arc protection.



| | | | |
|-----|-----|-----|-----|
| 211 | 410 | 001 | 434 |
|-----|-----|-----|-----|



| |
|----------------|
| CAT 4 |
| ATPV (CAL/CM²) |
| 54 |

| | |
|----------------|----------------|
| Lined | Unlined |
| CAT 4 | CAT 2 |
| ATPV (CAL/CM²) | ATPV (CAL/CM²) |
| 54 | 16 |

| |
|----------------|
| CAT 4 |
| ATPV (CAL/CM²) |
| 54 |

A FR Duck Traditional Coat / Quilt-Lined

- 101618
- Rib-knit storm cuffs
 - FR inside-waist adjustable drawcord
 - Two inside patch pockets with FR hook-and-loop closures
 - Imported

Style #/Color
 101618-211/Carhartt Brown
 101618-410/Dark Navy
 101618-001/Black

| S | M | L | XL | 2XL | 3XL | 4XL | 5XL | |
|---|---|---|----|-----|-----|-----|-----|---------|
| • | • | • | • | • | • | • | • | REGULAR |
| • | • | • | • | • | • | • | • | TALL |

B FR Duck Bib Overall / Quilt-Lined

- 101626
- Chap-style double-front
 - Multiple tool and utility pockets
 - FR elastic suspenders and FR buckles
 - Ankle-to-thigh brass leg zippers
 - Imported

Style #/Color
 101626-211/Carhartt Brown
 101626-410/Dark Navy
 101626-001/Black

| INSEAM | WAIST | | | | | | | | | | | | | |
|--------|-------|----|----|----|----|----|----|----|----|----|----|----|----|---|
| | 30 | 32 | 34 | 36 | 38 | 40 | 42 | 44 | 46 | 48 | 50 | 52 | 54 | |
| | 28 | • | • | • | • | • | • | • | • | • | • | • | • | • |
| | 30 | • | • | • | • | • | • | • | • | • | • | • | • | • |
| | 32 | • | • | • | • | • | • | • | • | • | • | • | • | • |
| | 34 | • | • | • | • | • | • | • | • | • | • | • | • | • |
| 36 | • | • | • | • | • | • | • | • | • | • | • | • | • | |

C FR Duck Hood / Quilt-Lined

- FRA265
- Three-piece hood design for better fit
 - Chin protector with FR hook-and-loop closure
 - Adjustable Nomex® FR drawcord
 - Arc-resistant snaps for attachment to FR outerwear only
 - NFPA 70E compliant only
 - Compatible with:
 101618 FR Duck Traditional Coat
 101623 FR Duck Bomber Jacket
 101695 FR Striped Duck Traditional Coat
 - Imported

Style #/Color
 FRA265-BRN/Carhartt Brown
 FRA265-DNY/Dark Navy
 FRA265-BLK/Black
 FRA265-RYL/Royal



ONE SIZE FITS ALL

CAT 4
ATPV [CAL/CM²]
54

- D FR Duck Active Jac/
Quilt-Lined**
101621
- Nomex® FR rib-knit cuffs and waistband
 - Attached quilt-lined hood with Nomex FR drawcord
 - Imported

Style #/Color
101621-211/Carhartt Brown
101621-410/Dark Navy
101621-001/Black

| S | M | L | XL | 2XL | 3XL | 4XL | 5XL | |
|---|---|---|----|-----|-----|-----|-----|---------|
| • | • | • | • | • | • | • | • | REGULAR |
| • | • | • | • | • | • | • | • | TALL |

CAT 4
ATPV [CAL/CM²]
54

- E FR Duck Bomber Jacket/
Quilt-Lined**
101623
- Nomex® FR rib-knit cuffs and waistband
 - Imported

Style #/Color
101623-211/Carhartt Brown
101623-410/Dark Navy

| S | M | L | XL | 2XL | 3XL | 4XL | 5XL | |
|---|---|---|----|-----|-----|-----|-----|---------|
| • | • | • | • | • | • | • | • | REGULAR |
| • | • | • | • | • | • | • | • | TALL |

CAT 2
ATPV [CAL/CM²]
16

- F Flame-Resistant Duck
Bib Overall / Unlined**
101627
- Chap-style double-front
 - Multiple tool and utility pockets
 - FR elastic suspenders and FR buckles
 - Ankle-to-above knee brass leg zippers
 - Imported

Style #/Color
101627-211/Carhartt Brown
101627-410/Dark Navy
101627-001/Black

| | | W A I S T | | | | | | | | | | | | |
|-------------|----|-----------|----|----|----|----|----|----|----|----|----|----|----|----|
| | | 30 | 32 | 34 | 36 | 38 | 40 | 42 | 44 | 46 | 48 | 50 | 52 | 54 |
| I N S E A M | 28 | • | • | • | • | • | • | • | • | • | • | • | • | • |
| | 30 | • | • | • | • | • | • | • | • | • | • | • | • | • |
| | 32 | • | • | • | • | • | • | • | • | • | • | • | • | • |
| | 34 | • | • | • | • | • | • | • | • | • | • | • | • | • |
| | 36 | • | • | • | • | • | • | • | • | • | • | • | • | • |



FR STRIPED OUTERWEAR

Heavyweight, 13-ounce, 100% cotton FR duck with 11.5-ounce quilt lining: FR modacrylic batting quilted to FR twill face cloth. Brass front zipper with Nomex® FR zipper tape plus inside and outside protective flaps with snap hook-and-loop closure for electric-arc protection (Coat), and Nomex® FR rib-knit storm cuffs. Two inside patch pockets with FR hook-and-loop closures. Bibs include FR elastic suspenders and FR buckles. 13-ounce duck fabric is CGSB155.20-2000 certified. Yellow/Silver/Yellow 2-inch contrasting trim (RT80™ 220C N3000) with 3M™ Scotchlite™ reflective material (#9740) ANSI/NFPA 2112 approved reflective trim with 360° visibility around legs.



211

410

001

434



CAT 4
ATPV (CAL/CM²)
54

| Lined | Unlined |
|----------------------|----------------------|
| CAT 4 | CAT 2 |
| ATPV (CAL/CM²) 54 | ATPV (CAL/CM²) 16 |

A **FR Striped Duck Traditional Coat / Quilt-Lined**

101695

- Fleece-lined insulated stand-up collar with optional detachable FR hood (FRA265)
- Two large pockets with flaps and hook-and-loop closures
- Left pocket includes radio integration pass-through slot inside for mic
- Nomex® FR rib-knit storm cuffs
- Imported

Style #/Color
101695-001/Black
101695-434/Royal

| S | M | L | XL | 2XL | 3XL | 4XL | 5XL | |
|---|---|---|----|-----|-----|-----|-----|---------|
| • | • | • | • | • | • | • | • | REGULAR |
| • | • | • | • | • | • | • | • | TALL |

B **FR Striped Duck Bib Overall / Quilt-Lined**

101628

- Ankle-to-thigh brass leg zippers
- Chap-style double-front
- Multiple tool and utility pockets
- Imported

Style #/Color
101628-001/Black
101628-434/Royal

| INSEAM | WAIST | | | | | | | | | | | | |
|--------|-------|----|----|----|----|----|----|----|----|----|----|----|----|
| | 30 | 32 | 34 | 36 | 38 | 40 | 42 | 44 | 46 | 48 | 50 | 52 | 54 |
| 28 | • | • | • | • | • | • | • | • | • | • | • | • | • |
| 30 | • | • | • | • | • | • | • | • | • | • | • | • | • |
| 32 | • | • | • | • | • | • | • | • | • | • | • | • | • |
| 34 | • | • | • | • | • | • | • | • | • | • | • | • | • |
| 36 | • | • | • | • | • | • | • | • | • | • | • | • | • |



CAT 2
ATPV (CAL/CM²)
16

C FR Striped Duck Bib Overall / Unlined

101703

- Ankle-to-above knee brass leg zippers
- Chap-style double-front
- Multiple tool and utility pockets
- Imported

Style #/Color
101703-001/Black
101703-434/Royal

WAIST

| | | | | | | | | | | | | | |
|----|----|----|----|----|----|----|----|----|----|----|----|----|----|
| | 30 | 32 | 34 | 36 | 38 | 40 | 42 | 44 | 46 | 48 | 50 | 52 | 54 |
| 28 | • | • | • | • | • | • | • | • | • | • | • | • | • |
| 30 | • | • | • | • | • | • | • | • | • | • | • | • | • |
| 32 | • | • | • | • | • | • | • | • | • | • | • | • | • |
| 34 | • | • | • | • | • | • | • | • | • | • | • | • | • |
| 36 | • | • | • | • | • | • | • | • | • | • | • | • | • |

INSEAM



CAT 2
ATPV (CAL/CM²)
11

D FR Striped Coverall

101705

- 9-ounce, 100% cotton FR twill
- Pleated bi-swing back
- Triple-stitched main seams
- Multiple tool and utility pockets
- Imported

Style #/Color
100705-434/Royal

CHEST

| | | | | | | | | | | | | | | |
|---------|----|----|----|----|----|----|----|----|----|----|----|----|----|----|
| | 34 | 36 | 38 | 40 | 42 | 44 | 46 | 48 | 50 | 52 | 54 | 56 | 58 | 60 |
| SHORT | • | • | • | • | • | • | • | • | • | • | • | • | • | • |
| REGULAR | • | • | • | • | • | • | • | • | • | • | • | • | • | • |
| TALL | • | • | • | • | • | • | • | • | • | • | • | • | • | • |

FR EXTREMES® COATS/PARKAS

9-ounce FR canvas 88% cotton/12% high-tenacity nylon. Fully insulated with 3M™ Thinsulate™ 200g Platinum Insulation FR. Unique sherpa-lined interior back panel for increased warmth. Left shoulder utility band for mic clip, left chest pocket has a radio integration pass-through slot, and four generous interior pockets: two upper and two lower. Interior pockets include an ID patch, left sleeve upper arm pocket angled for ease of use, Nomex® inside-waist adjustable drawcord to keep the weather out, heavy duty two-way Vislon® zipper with Nomex® FR zipper tape, full-length interior/exterior storm flap and hook-and-loop closure, grip-friendly zipper-pull, and clip-friendly D-ring loops under pocket flaps. Bib includes double knees and two reinforced kick panels on both outside and inside lining of lower leg hems, and back waistband elastic for comfortable fit.



410



MADE WITH



FLAME RESISTANT
RETARDATEUR DE FLAMME



CAT 4
ATPV (CAL/CM²)
50

A FR Extremes® Arctic Parka

100783

- Deep adjustable snorkel hood
- Removable inherent FR scruff
- Imported

Style #/Color
100783-410/Dark Navy

| S | M | L | XL | 2XL | 3XL | 4XL | 5XL | |
|---|---|---|----|-----|-----|-----|-----|---------|
| • | • | • | • | • | • | • | • | REGULAR |
| • | • | • | • | • | • | • | • | TALL |



CAT 4
ATPV [CAL/CM²]
50

B **FR Extremes® Arctic Coat**
100784

- Insulated stand-up collar
- Accessory hood available separately (101392)
- Imported

Style #/Color
100784-410/Dark Navy

| S | M | L | XL | 2XL | 3XL | 4XL | 5XL |
|---|---|---|----|-----|-----|-----|-----|
| • | • | • | • | • | • | • | • |
| • | • | • | • | • | • | • | • |

REGULAR
TALL

CAT 4
ATPV [CAL/CM²]
50

C **FR Extremes® Biberall**
100785

- Ankle-to-thigh zipper on each leg
- Inside chest pocket
- Two reinforced back pockets
- Imported

Style #/Color
100785-410/Dark Navy

CAT 4
ATPV [CAL/CM²]
50

D **FR Extremes® Arctic Hood**
101392

- ID patch inside
- Inside warming pouch pockets over ears
- Imported

Style #/Color
100783-410/Dark Navy

ONE SIZE FITS ALL



FR TWILL COVERALLS

The coveralls that cover a lot more than just your back out there. Built with two chest pockets with flaps and two pass-through pockets. Plus a left sleeve upper-arm pocket, and a brass front zipper with Nomex® FR zipper tape and inside and outside protective flap. Split-back construction with a pleated bi-swing back and triple-stitched main seams throughout for durability.



| | | |
|-----|-----|-----|
| 410 | 250 | 033 |
|-----|-----|-----|

CAT 2
ATPV (CAL/CM²)
11

A FR Traditional Twill Coverall

101017

- 9-ounce, FR twill: 100% cotton
- Spread collar
- Utility band on left chest
- Utility pocket on right leg
- Leg openings fit over boots for easy on and off
- Imported

Style #/Color
101017-410/Dark Navy
101017-250/Khaki
101017-033/Gray

CHEST

| 34 | 36 | 38 | 40 | 42 | 44 | 46 | 48 | 50 | 52 | 54 | 56 | 58 | 60 | |
|----|----|----|----|----|----|----|----|----|----|----|----|----|----|---------|
| • | • | • | • | • | • | • | • | • | • | • | • | • | • | SHORT |
| • | • | • | • | • | • | • | • | • | • | • | • | • | • | REGULAR |
| • | • | • | • | • | • | • | • | • | • | • | • | • | • | TALL |

CAT 2
ATPV (CAL/CM²)
8.9

B FR Deluxe Coverall

102150

- 7-ounce, FR twill: 88% cotton/12% nylon
- Stand-up collar with snap closure
- Two utility bands on chest
- Two side-entry pass through pockets with snap closures; multiple tool and utility pockets
- Ankle-to-above knee brass leg zippers with Nomex® FR zipper tape
- Imported

Style #/Color
102150-410/Dark Navy
102150-250/Khaki
102150-033/Gray

| S | M | L | XL | 2XL | 3XL | 4XL | 5XL | |
|---|---|---|----|-----|-----|-----|-----|---------|
| • | • | • | • | • | • | • | • | SHORT |
| • | • | • | • | • | • | • | • | REGULAR |
| • | • | • | • | • | • | • | • | TALL |



FR RAINWEAR

12-ounce Nomex® IIIA fabric. FR neoprene sweat/moisture barrier with 3M™ Scotchlite™ Reflective Material with two-inch reflective trim.



827



CAT 2
ATPV (CAL/CM²)
13

- C FR Rain Jacket**
100447
- Chemical splash resistant
 - Attached hood and stowaway functionality
 - Lanyard pass-through for safety harness compatibility
 - Imported

Style #/Color
100447-827/Bold Orange

| S | M | L | XL | 2XL | 3XL | 4XL | 5XL | |
|---|---|---|----|-----|-----|-----|-----|---------|
| • | • | • | • | • | • | • | • | REGULAR |
| • | • | • | • | • | • | • | • | TALL |

CAT 2
ATPV (CAL/CM²)
13

- D FR Rainwear Bib Overall**
100445
- High back with FR elastic suspenders and FR center-release buckles
 - Non-conductive leg zippers to knee
 - Imported

Style #/Color
100445-827/Bold Orange

| | S | M | L | XL | 2XL | 3XL | 4XL | 5XL | |
|--------|---|---|---|----|-----|-----|-----|-----|---------|
| INSEAM | • | • | • | • | • | • | • | • | REGULAR |
| 32 | • | • | • | • | • | • | • | • | TALL |
| 34 | • | • | • | • | • | • | • | • | |

FR MEN'S DENIM JEANS

Regardless of fit, this soft yet durable denim more than fills the need for a trustworthy pair of FR jeans. Featuring an arc-resistant button closure at the waist and a brass zipper fly with Nomex® FR zipper tape.



| | | | |
|-----|-----|------------|-----|
| DNM | 401 | MDS 451 | 972 |
|-----|-----|------------|-----|



CAT 2
ATPV (CAL/CM²)
17

A **FR Rugged Flex® Jean – Straight Traditional Fit**

101814

- 12.5-ounce, FR denim: 99% cotton/ 1% spandex
- Straight Traditional fit; sits slightly below the waist
- Two back pockets
- Imported

Style #/Color
101814-972/Deep Indigo Wash

CAT 2
ATPV (CAL/CM²)
16

B **FR Signature Denim Jean – Relaxed Fit**

FRB100

- 11.75-ounce, FR denim: 100% cotton
- Relaxed fit; sits above the waist
- Two reinforced back pockets
- Imported

Style #/Color
FRB100-DNM/Denim

| | | WAIST | | | | | | | | | | | | | | | |
|--------|----|-------|----|----|----|----|----|----|----|----|----|----|----|----|----|----|----|
| | | 30 | 31 | 32 | 33 | 34 | 35 | 36 | 38 | 40 | 42 | 44 | 46 | 48 | 50 | 52 | 54 |
| INSEAM | 30 | • | • | • | • | • | • | • | • | • | • | • | • | • | • | • | • |
| | 32 | • | • | • | • | • | • | • | • | • | • | • | • | • | • | • | • |
| | 34 | • | • | • | • | • | • | • | • | • | • | • | • | • | • | • | • |
| | 36 | • | • | • | • | • | • | • | • | • | • | • | • | • | • | • | • |



| |
|-----------------------------|
| CAT 2 |
| ATPV (CAL/CM ²) |
| 21 |

C **FR Utility Jean – Relaxed Fit**

FRB004

- 14.75-ounce, FR denim: 100% cotton
- Relaxed fit; sits at the waist
- Two reinforced back pockets
- Imported

Style #/Color
FRB004-MDS/Midstone



| |
|-----------------------------|
| CAT 2 |
| ATPV (CAL/CM ²) |
| 21 |

D **FR Utility Denim Double-Front Jean – Relaxed Fit**

100170

- 14.75-ounce, FR denim: 100% cotton
- Relaxed fit; sits at the waist
- Two reinforced back pockets
- Utility patch pocket on right leg
- Chap-style double front with cleanout opening for knee pads
- Imported

Style #/Color
100170-451/Midstone



| |
|-----------------------------|
| CAT 2 |
| ATPV (CAL/CM ²) |
| 16 |

E **FR Signature Denim Dungaree**

FRB13

- 11.75-ounce, FR denim: 100% cotton
- Loose Original fit; sits slightly above the waist
- Multiple utility pockets
- Imported

Style #/Color
FRB13-DNM/Denim
FRB13-401/Classic Dark

FR MEN'S CANVAS WORKPANTS LOOSE ORIGINAL FIT

Workpants made from the toughest FR canvas known to Carhartt. Loose Original fit featuring an arc-resistant button closure at the waist and a brass zipper fly with Nomex® FR zipper tape.



DNY
410

GKH

BLK
001

MOS

246

CAT 2
ATPV (CAL/CM²)
12



FR Midweight Canvas Pant – Loose Original Fit

FRB159

- Midweight 8.5-ounce, FR canvas: 88% cotton/12% high-tenacity nylon
- Sits slightly above the waist
- Cell phone pocket and multiple utility pockets on right leg
- Two reinforced back pockets
- Imported

Style #/Color

FRB159-DNY/Dark Navy

FRB159-GKH/Golden Khaki

FRB159-MOS/Moss

WAIST

| | 30 | 31 | 32 | 33 | 34 | 35 | 36 | 38 | 40 | 42 | 44 | 46 | 48 | 50 | 52 | 54 |
|----|----|----|----|----|----|----|----|----|----|----|----|----|----|----|----|----|
| 30 | • | • | • | • | • | • | • | • | • | • | • | • | • | • | • | • |
| 32 | • | • | • | • | • | • | • | • | • | • | • | • | • | • | • | • |
| 34 | • | • | • | • | • | • | • | • | • | • | • | • | • | • | • | • |
| 36 | • | • | • | • | • | • | • | • | • | • | • | • | • | • | • | • |





B

CAT 2
ATPV (CAL/CM²)
12

B FR Canvas Cargo Pant
FRB240

- Midweight 8.5-ounce, FR canvas: 88% cotton/12% high-tenacity nylon
- Sits slightly above the waist
- Two large side cargo pockets with pen slots
- Two reinforced back pockets
- Imported

Style #/Color
FRB240-DNY/Dark Navy
FRB240-GKH/Golden Khaki
FRB240-BLK/Black

| | | WAIST | | | | | | | | | | | | | | | |
|--------|----|-------|----|----|----|----|----|----|----|----|----|----|----|----|----|----|----|
| | | 30 | 31 | 32 | 33 | 34 | 35 | 36 | 38 | 40 | 42 | 44 | 46 | 48 | 50 | 52 | 54 |
| INSEAM | 30 | | | | | | | | | | | | | | | | |
| | 32 | | | | | | | | | | | | | | | | |
| | 34 | | | | | | | | | | | | | | | | |
| | 36 | | | | | | | | | | | | | | | | |



C

CAT 2
ATPV (CAL/CM²)
15

C FR Washed Duck Work Dungaree
100791

- 11-ounce, FR duck: 88% cotton/12% high-tenacity nylon.
- Sits at the waist
- Left leg utility band
- Imported

Style #/Color
100791-001/Black
100791-246/Mid Brown
100791-410/Dark Navy

| | | WAIST | | | | | | | | | | | | | | | |
|--------|----|-------|----|----|----|----|----|----|----|----|----|----|----|----|----|----|----|
| | | 30 | 31 | 32 | 33 | 34 | 35 | 36 | 38 | 40 | 42 | 44 | 46 | 48 | 50 | 52 | 54 |
| INSEAM | 30 | | | | | | | | | | | | | | | | |
| | 32 | | | | | | | | | | | | | | | | |
| | 34 | | | | | | | | | | | | | | | | |
| | 36 | | | | | | | | | | | | | | | | |

DOES ITS BEST WORK AGAINST SWEAT, STAINS AND FLAME

Up to code and our highest standards for durability and performance. Flame-Resistant Carhartt Force® combines over 127 years of hands-on experience with the hands down toughest tech we ever fit in a

T-shirt. Built with FastDry® sweat-wicking technology and the ability to trap and release odors in the wash makes it the hardest working FR shirt to ever walk on the job site.

CAT 2
ATPV (CAL/CM²)
8.9

A **FR Force Cotton Hybrid Shirt**

101698

- Original fit
- Button-down collar with button closure
- Two chest pockets with button closure
- Triple-stitched main seams
- Imported

Style #/Color

101698-410/Dark Navy
101698-051/Light Gray
101698-250/Khaki
101698-465/Medium Blue

| S | M | L | XL | 2XL | 3XL | 4XL | 5XL | |
|---|---|---|----|-----|-----|-----|-----|---------|
| • | • | • | • | • | • | • | • | REGULAR |
| • | • | • | • | • | • | • | • | TALL |



CAT 2
ATPV (CAL/CM²)
8.9

B **FR Force Cotton Long-Sleeve Henley**

100237

- Rib-knit henley collar and cuffs
- Durable left-chest pocket
- Imported

Style #/Color

100237-410/Dark Navy
100237-051/Light Gray
100237-250/Khaki
100237-465/Medium Blue

| S | M | L | XL | 2XL | 3XL | 4XL | 5XL | |
|---|---|---|----|-----|-----|-----|-----|---------|
| • | • | • | • | • | • | • | • | REGULAR |
| • | • | • | • | • | • | • | • | TALL |



FR FORCE KNITS ORIGINAL FIT

Long-lasting, heavyweight 6.75-ounce, 100% cotton FR jersey knit. Carhartt Force® fights odors and its FastDry® technology wicks away sweat for comfort. Side-seamed construction minimizes twisting and maximizes comfort while you're on the job. Durable left-chest pocket.



| | | | |
|-----|-----|-----|-----|
| 410 | 051 | 250 | 465 |
|-----|-----|-----|-----|

INDUSTRIAL

FLAME-RESISTANT

HIGH-VISIBILITY

ADDITIONAL INFORMATION



| |
|-----------------------|
| CAT 2 |
| ATPV [CAL/CM²] 8.9 |

C **FR Force Cotton Short-Sleeve T-Shirt**
100234
• Rib-knit crewneck collar
• Imported

Style #/Color
100234-410/Dark Navy
100234-051/Light Gray

| S | M | L | XL | 2XL | 3XL | 4XL | 5XL |
|---|---|---|----|-----|-----|-----|-----|
| • | • | • | • | • | • | • | • |
| • | • | • | • | • | • | • | • |

REGULAR
TALL

| |
|-----------------------|
| CAT 2 |
| ATPV [CAL/CM²] 8.9 |

D **FR Force Cotton Long-Sleeve T-Shirt**
100235
• Rib-knit crewneck collar and cuffs
• Imported

Style #/Color
100235-410/Dark Navy
100235-051/Light Gray
100235-250/Khaki
100235-465/Medium Blue

| S | M | L | XL | 2XL | 3XL | 4XL | 5XL |
|---|---|---|----|-----|-----|-----|-----|
| • | • | • | • | • | • | • | • |
| • | • | • | • | • | • | • | • |

REGULAR
TALL

| |
|-----------------------|
| CAT 2 |
| ATPV [CAL/CM²] 8.9 |

E **FR Striped Force Cotton Long-Sleeve T-Shirt**
101699
• Rib-knit henley collar and cuffs
• Imported

Style #/Color
101699-051/Light Gray
101699-410/Dark Navy

| S | M | L | XL | 2XL | 3XL | 4XL | 5XL |
|---|---|---|----|-----|-----|-----|-----|
| • | • | • | • | • | • | • | • |
| • | • | • | • | • | • | • | • |

REGULAR
TALL

| |
|-----------------------|
| CAT 2 |
| ATPV [CAL/CM²] 8.9 |

F **FR Force Cotton Graphic Long-Sleeve T-Shirt**
101153
• Rib-knit crewneck and cuffs
• Flame-resistant graphic down left sleeve
• Imported

Style #/Color
101153-410/Dark Navy
101153-051/Light Gray

| S | M | L | XL | 2XL | 3XL | 4XL | 5XL |
|---|---|---|----|-----|-----|-----|-----|
| • | • | • | • | • | • | • | • |
| • | • | • | • | • | • | • | • |

REGULAR
TALL

FR FORCE HIGH-VISIBILITY KNITS ORIGINAL FIT

Long-lasting, heavyweight 6.75-ounce, 100% cotton FR jersey knit. Carhartt Force® fights odor and its FastDry® technology wicks away sweat for comfort. Features dark navy color-blocking in high wear areas to hide dirt and 3M™ Scotchlite™ Reflective Material. Plus side-seamed construction to minimize twisting and maximize comfort on the job.



323



A **FR High-Visibility Force Long-Sleeve T-Shirt Class 3**
102905

CAT 2 **NEW**
ATPV (CAL/CM²) 8.2 **AVAILABLE**
JULY 2017

- Rib-knit henley collar and cuffs
- Left chest pocket
- Durable left-chest
- Imported

Style #/Color
102905-323/Brite Lime

| S | M | L | XL | 2XL | 3XL | 4XL | 5XL | |
|---|---|---|----|-----|-----|-----|-----|---------|
| • | • | • | • | • | • | • | • | REGULAR |
| • | • | • | • | • | • | • | • | TALL |



B **FR High-Visibility Force Hybrid Shirt**
102843

CAT 2 **NEW**
ATPV (CAL/CM²) 8.2 **AVAILABLE**
JULY 2017

- FR melamine buttons throughout
- Two chest pockets with button closure
- Extended sleeve plackets with two-button adjustable cuffs
- Triple-stitched main seams
- Imported

Style #/Color
102843-323/Brite Lime

| S | M | L | XL | 2XL | 3XL | 4XL | 5XL | |
|---|---|---|----|-----|-----|-----|-----|---------|
| • | • | • | • | • | • | • | • | REGULAR |
| • | • | • | • | • | • | • | • | TALL |



INDUSTRIAL

FLAME-RESISTANT

HIGH-VISIBILITY

ADDITIONAL INFORMATION

SAFE THAT'S ANYTHING BUT SORRY

FR WOVEN BUTTON-DOWN ORIGINAL FIT

Button-down collar with button closure and FR melamine buttons throughout. Two chest pockets with flaps and button closures. Extended sleeve plackets with two-button adjustable cuffs. Triple-stitched main seams for durability..



CAT 2
ATPV [CAL/CM²]
8.6

A FR Classic Twill Shirt

FRS160

- 7-ounce, FR twill: 88% cotton/ 12% high-tenacity nylon
- Imported

Style #/Color

FRS160-KHI/Khaki
FRS160-DNY/Dark Navy
FRS160-GRY/Gray
FRS160-MBL/Medium Blue
FRS160-608/Dark Crimson

| S | M | L | XL | 2XL | 3XL | 4XL | 5XL | |
|---|---|---|----|-----|-----|-----|-----|---------|
| • | • | • | • | • | • | • | • | REGULAR |
| • | • | • | • | • | • | • | • | TALL |

CAT 2
ATPV [CAL/CM²]
8.7

B FR Lightweight Twill Shirt

FRS003

- 6-ounce, FR twill: 88% cotton/ 12% high-tenacity nylon
- Imported

Style #/Color

FRS003-KHI/Khaki
FRS003-DNY/Dark Navy
FRS003-GRY/Gray
FRS003-465/Medium Blue
FRS003-RYL/Royal
FRS003-629/H Red

| S | M | L | XL | 2XL | 3XL | 4XL | 5XL | |
|---|---|---|----|-----|-----|-----|-----|---------|
| • | • | • | • | • | • | • | • | REGULAR |
| • | • | • | • | • | • | • | • | TALL |

CAT 2
ATPV [CAL/CM²]
9.5

C FR Classic Plaid Shirt

101028

- 6.5-ounce, FR twill: 88% cotton/ 12% high-tenacity nylon
- Extended sleeve plackets with two-button adjustable cuffs
- Imported

Style #/Color

101028-316/Moss
101028-412/Navy
101028-245/Mid Brown/Navy
101028-033/Gray
101028-932/Dark Crimson/Black
101028-264/Golden Khaki
101028-608/Dark Crimson

| S | M | L | XL | 2XL | 3XL | 4XL | 5XL | |
|---|---|---|----|-----|-----|-----|-----|---------|
| • | • | • | • | • | • | • | • | REGULAR |
| • | • | • | • | • | • | • | • | TALL |



FR WOVEN SNAP FRONT ORIGINAL FIT

Snap-front closure. Spread collar with extended sleeve plackets and three-snap cuffs. Triple-stitched main seams for durability.



CAT 2
ATPV (CAL/CM²)
8.5

CAT 2
ATPV (CAL/CM²)
9.5

A **FR Snap-Front Shirt**
101572
• 7.5-ounce, FR twill: 100% cotton
• Imported

Style #/Color
101572-250/Khaki
101572-410/Dark Navy

B **FR Snap-Front Plaid Shirt**
102015
• 6.5-ounce, FR twill: 88% cotton/
12% high-tenacity nylon
• Imported

Style #/Color
102015-412/Navy
102015-316/Moss

| S | M | L | XL | 2XL | 3XL | 4XL | 5XL |
|---|---|---|----|-----|-----|-----|-----|
| • | • | • | • | • | • | • | • |
| • | • | • | • | • | • | • | • |

REGULAR
TALL

| S | M | L | XL | 2XL | 3XL | 4XL | 5XL |
|---|---|---|----|-----|-----|-----|-----|
| • | • | • | • | • | • | • | • |
| • | • | • | • | • | • | • | • |

REGULAR
TALL



FR CANVAS SHIRTS

8.5-ounce, FR canvas: 88% cotton/12% high-tenacity nylon. Snap front. Two chest pockets.



| | | | |
|-----|-----|-----|-----|
| 201 | 001 | 316 | 410 |
|-----|-----|-----|-----|

CAT 3
ATPV [CAL/CM²]
34

A FR Canvas Shirt Jac

- 100432
- Original fit
 - 7-ounce, FR twill lining
 - Imported

Style #/Color
100432-201/Dark Brown
100432-001/Black
100432-316/Moss

| S | M | L | XL | 2XL | 3XL | 4XL | 5XL | |
|---|---|---|----|-----|-----|-----|-----|---------|
| • | • | • | • | • | • | • | • | REGULAR |
| • | • | • | • | • | • | • | • | TALL |



CAT 2
ATPV [CAL/CM²]
14

NEW
AVAILABLE
JULY 2017

B FR Full Swing® Quick Duck® Shirt Jac

- 102682
- 8.5-ounce, FR canvas
 - Rain Defender® durable water repellent
 - Mighty Back™ bi-swing between shoulders for instant recovery
 - Flex Elbow™ for less restriction
 - Two inside pockets
 - Utility band at left chest
 - Two lower-front welt pockets
 - Adjustable, two-snap cuffs
 - Triple-stitched main seams for durability
 - Locker loop facilitates hanging

Style #/Color
102682-410/Dark Navy

| S | M | L | XL | 2XL | 3XL | 4XL | 5XL | |
|---|---|---|----|-----|-----|-----|-----|---------|
| • | • | • | • | • | • | • | • | REGULAR |
| • | • | • | • | • | • | • | • | TALL |



FR FORCE® RUGGED FLEX® FLEECE RELAXED FIT

Warm 12.5-ounce, FR fleece: 95% cotton/
5% spandex. Featuring both the benefits
of Force® and the extra stretch and added
ease of movement of Rugged Flex® technology.



410

CAT 2
ATPV (CAL/CM²)
17



C FR Force Rugged Flex® Quarter-Zip Fleece

101576

- Mock-neck collar with quarter-zip
Vislon® front zipper and Nomex®
FR zipper tape
- Front hand-warmer pocket
- Imported

Style #/Color
101576-410/Dark Navy

| S | M | L | XL | 2XL | 3XL | 4XL | 5XL | |
|---|---|---|----|-----|-----|-----|-----|---------|
| • | • | • | • | • | • | • | • | REGULAR |
| • | • | • | • | • | • | • | • | TALL |

CAT 2
ATPV (CAL/CM²)
17



D FR Force Rugged Flex® Hooded Fleece

101577

- Attached three-piece hood with
adjustable FR drawcord
- Vislon® front zipper with Nomex®
FR zipper tape
- Two front hand-warmer pockets
- Map pocket on left side
- Imported

Style #/Color
101577-410/Dark Navy

| S | M | L | XL | 2XL | 3XL | 4XL | 5XL | |
|---|---|---|----|-----|-----|-----|-----|---------|
| • | • | • | • | • | • | • | • | REGULAR |
| • | • | • | • | • | • | • | • | TALL |

CAT 2
EBT (CAL/CM²)
16

E FR Portage Jacket

101575

- Midweight
- Rain Defender® durable water-
repellent finish
- High warmth-to-weight ratio, but
still wind-resistant and breathable
- Two lower-front welt pockets
- Imported

Style #/Color
101575-410/Dark Navy

| S | M | L | XL | 2XL | 3XL | 4XL | 5XL | |
|---|---|---|----|-----|-----|-----|-----|---------|
| • | • | • | • | • | • | • | • | REGULAR |
| • | • | • | • | • | • | • | • | TALL |



INDUSTRIAL

FLAME-RESISTANT

HIGH-VISIBILITY

ADDITIONAL INFORMATION

FLAMES CAN'T HOLD A CANDLE TO THESE FR EXTRAS

Complement your Carhartt FR gear with the rugged hats, liners, hoods, and base layer gear built to match.



A **FR Base Force® Cold Weather Weight Top**

101245

- Relaxed fit
- 7.4-ounce, FR knit: 50% cotton/24% modal/24% supima/2% spandex.
- Fights odors and wicks sweat for warmth and comfort
- Self fabric crewneck and cuffs
- Imported

Style #/Color
100234-410/Dark Navy

| S | M | L | XL | 2XL | 3XL | 4XL | 5XL | |
|---|---|---|----|-----|-----|-----|-----|---------|
| • | • | • | • | • | • | • | • | REGULAR |
| | | | | | | | | TALL |



B **FR Base Force® Cold Weather Weight Bottom**

101246

- 7.4-ounce, FR knit: 50% cotton/24% modal/24% supima/2% spandex.
- Fights odors and wicks sweat for warmth and comfort
- NFPA 70E compliant only
- Imported

Style #/Color
101246-410/Dark Navy

| S | M | L | XL | 2XL | 3XL | 4XL | 5XL | |
|---|---|---|----|-----|-----|-----|-----|---------|
| • | • | • | • | • | • | • | • | REGULAR |
| | | | | | | | | TALL |

FR ACCESSORIES

6.75-ounce, FR jersey knit: 100% cotton. Carhartt Force® fights odors and FastDry® technology wicks away sweat for comfort. Rib-knit crewneck collar. Left-chest pocket. Side-seamed construction minimizes twisting



410
DNY

BLK

CAT 3

EBT (CAL/CM²)
32

C FR Hard Hat Liner

101200

- 9-ounce, FR twill: 100% cotton + 11.7-ounce FR Polarec® Power Stretch® fabric lining: 68% modacrylic/29% rayon/3% spandex
- Face mask pulls up over the nose
- Lower-front crossover closure keeps out wind and protects the neck
- Inside warming pouch pocket over ears
- Imported

Style #/Color

101200-410/Dark Navy

ONE SIZE FITS ALL



CAT 2

ATPV (CAL/CM²)
18



D FR Double-Layer Force Balaclava

FRA003

- 6-ounce, 2 ply FR knit: 48% modacrylic/48% Tencel®/4% spandex
- Full facial protection extends below the neckline
- Face mask pulls down below chin when not needed
- Imported

Style #/Color

FRA003-DNY/Dark Navy

FRA003-BLK/Black

ONE SIZE FITS ALL



CAT 2

ATPV (CAL/CM²)
16



E FR Fleece Hat

101578

- 10.5-ounce, FR Polarec® Wind Pro® fleece: 44% viscose/39% modacrylic/14% para-aramid/3% spandex
- High warmth-to-weight ratio while being highly wind-resistant and breathable
- Fits well under a hard hat
- Imported

Style #/Color

101578-410/Dark Navy

ONE SIZE FITS ALL



CAT 2

ATPV (CAL/CM²)
16



F FR Fleece Neck Gaiter

101580

- 10.5-ounce, FR Polarec® Wind Pro® fleece: 44% viscose/39% modacrylic/14% para-aramid/3% spandex
- High warmth-to-weight ratio that's highly wind-resistant and breathable
- Imported

Style #/Color

101580-410/Dark Navy

ONE SIZE FITS ALL

WOMEN'S FR: REMADE FOR THE DEMANDS OF HER EVERY DAY

From fit to function, Carhartt Women's FR gear has been redesigned to better serve the #CarharttWoman that wears it. Every stitch and seam of this FR gear is engineered with the Carhartt Woman's every move in mind. Equipped with the latest innovations and technologies including Full Swing® for increased mobility, Rugged Flex® for added stretch and recovery, plus the odor-fighting, sweat-wicking powers of Carhartt Force®. Because heat and flames don't take it any easier on a woman. Neither does this gear.



KEEPS YOU COOL AND STILL PACKS HEAT

The hotter it gets, the harder these shirts work. Because Women's FR Force® gear combines over 127 years of hands-on experience with the hands down toughest tech we ever fit in a shirt. Featuring FastDry® sweat-wicking technology, plus odor-fighting abilities, so you don't have to worry about anything getting in your way of work.



CAT 2 **NEW**
ATPV [CAL/CM²] **AVAILABLE**
8.9 **JULY 2017**

A **Women's FR Force Cotton Hybrid Shirt**

- 102687
- 6.75-ounce, 100% cotton jersey
 - Slightly fitted
 - Mesh side panel extends to back yoke
 - Triple-stitched main seams for durability
 - Imported

Style #/Color
102687-250/Khaki
102687-410/Dark Navy
102687-465/Medium Blue



CAT 2 **NEW**
ATPV [CAL/CM²] **AVAILABLE**
8.9 **JULY 2017**

C **Women's FR Force Cotton Long-Sleeve Crewneck T-Shirt**

- 102685
- 6.75-ounce, 100% cotton jersey
 - Slightly fitted
 - Rib-knit crewneck collar and cuffs
 - Drop tail adds coverage
 - Imported

Style #/Color
102685-410/Dark Navy
102685-250/Khaki



CAT 2 **NEW**
ATPV [CAL/CM²] **AVAILABLE**
8.9 **JULY 2017**

D **Women's FR Force Cotton Long-Sleeve Henley**

- 102686
- 6.75-ounce, 100% cotton jersey
 - Slightly fitted
 - Rib-knit Henley collar and cuffs
 - Drop tail adds coverage
 - Imported

Style #/Color
102686-410/Dark Navy





CAT 2 **NEW**
ATPV (CAL/CM²) **AVAILABLE**
11 **JULY 2017**

E Women's FR Rugged Flex® Canvas Pant – Original Fit
102689

- 9-ounce, FR canvas: 98% cotton/2% spandex
- Mid-front rise, sits just below the waist
- Higher back for added coverage
- Two reinforced back pockets
- Leg openings fit over work boots
- Imported

Style #/Color
102689-410/Dark Navy
102689-264/Golden Khaki

CAT 2 **NEW**
EBT (CAL/CM²) **AVAILABLE**
14 **JULY 2017**

F Women's FR Rugged Flex® Jean – Original Fit
102688

- 11-ounce, 69% cotton/30% modacrylic/1% elastic
- Mid-front rise; sits just below the waist
- Higher back rise for added coverage
- Imported

Style #/Color
102688-417/Premium Dark

| | | | | | | | | | | | | | | | | | |
|--------|---------------|---|---|---|---|---|---|---|---|---|---|---|---|---|---|---|---|
| INSEAM | SHORT 30 | • | • | • | • | • | • | • | • | • | • | • | • | • | • | • | • |
| | REGULAR 32 | • | • | • | • | • | • | • | • | • | • | • | • | • | • | • | • |
| | TALL 34 | • | • | • | • | • | • | • | • | • | • | • | • | • | • | • | • |
| | | | | | | | | | | | | | | | | | |



WOMEN'S FR RUGGED FLEX® RELAXED FIT

7-ounce, FR twill: 87% cotton/7% high-tenacity nylon/
5% polyester/1% spandex. Rugged Flex® durable
stretch technology for ease of movement.



410



CAT 2
ATPV (CAL/CM²)
8.7

NEW
AVAILABLE
JULY 2017

A **New Women's FR
Rugged Flex® Coverall**
102450

- Two side-entry pass through pockets with snap closures
- Right-side tool and utility pocket
- Left-sleeve upper arm pocket
- Imported

Style #/Color
102450-410/Dark Navy

| | XS | S | M | L | XL | XXL |
|---------------|----|---|---|---|----|-----|
| IN SEAM | | | | | | |
| SHORT 30 | | • | • | • | • | |
| REGULAR 32 | | • | • | • | • | • |
| TALL 34 | | • | • | • | • | |

A

WOMEN'S FR FULL SWING® QUICK DUCK® OUTERWEAR

8.5-ounce, FR canvas: 88% cotton/12% high-tenacity nylon with Rain Defender® durable water repellent. Sherpa lining in body. Quick Duck® fabric is 20% lighter but just as warm as heavier outerwear, Insulated with 150g 3M™ Thinsulate™ Platinum Insulation FR. Attached hoods with adjustable Nomex® drawcord plus two inside patch pockets with FR hook-and-loop closures.



410

211

MADE WITH
3M THINSULATE™
Insulation / Isolation

FLAME RESISTANT
RETARDATEUR DE FLAMME



CAT 3
EBT (CAL/CM²)
35

NEW
AVAILABLE
JULY 2017

B Women's FR Full Swing®
Quick Duck® Jacket /
Sherpa Lined

102694

- Mighty Back™ bi-swing between shoulders for instant recovery
- Flex Elbow™ for less restriction
- Freedom Gusset™ under the arms
- Rain Defender® durable water repellent
- Two lower-front pockets with zipper closure
- Imported

Style #/Color
102000-410/Dark Navy
102694-211/Carhartt Brown

| | | | | | |
|----|---|---|---|----|-----|
| XS | S | M | L | XL | XXL |
| • | • | • | • | • | • |

INDUSTRIAL

FLAME-RESISTANT

HIGH-VISIBILITY

ADDITIONAL INFORMATION

WOMEN'S FR BASICS

The hardworking, comfortable FR basics you need for a long day on the job. Cut to fit you, not the rest of the guys on your crew.



410
DNY

211

051

407

KHI

GKH



CAT 3
ATPV [CAL/CM²]
34

A Women's FR Midweight Canvas Active Jac

101629

- 8.5-ounce FR quilt lining: FR modacrylic batting quilted to twill face cloth
- Quilt-lined hood
- Brass front zipper with Nomex® FR zipper tape plus inside and outside protective flaps with snap closure for electric-arc protection
- Imported

Style #/Color

101629-410/Dark Navy

101629-211/Carhartt Brown

XS S M L XL XXL
• • • • • •

CAT 2
ATPV (CAL/CM²)
8.9



B Women's FR Force Cotton Long-Sleeve T-Shirt

101107

- 6.75 ounce knit: 100% cotton FR jersey knit
- Relaxed fit
- Carhartt Force® fights odors and its FastDry® technology wicks away sweat for comfort
- Rib-knit crewneck collar
- Imported

Style #/Color
101107-410/Dark Navy
101107-051/Light Gray

| | | | | | |
|----|---|---|---|----|-----|
| XS | S | M | L | XL | XXL |
| • | • | • | • | • | • |

CAT 2
ATPV (CAL/CM²)
16

C Women's FR Signature Denim Jean

101249

- 11.75-ounce, FR denim: 100% cotton
- Relaxed fit/relaxed fitting seat and thigh
- Triple-stitched main seams for durability
- Imported

Style #/Color
101249-407/Denim

| | | | | | | | | | | |
|--------|----|---|---|---|----|----|----|----|----|----|
| | 2 | 4 | 6 | 8 | 10 | 12 | 14 | 16 | 18 | 20 |
| INSEAM | 28 | • | • | • | • | • | • | • | • | • |
| | 30 | • | • | • | • | • | • | • | • | • |
| | 32 | • | • | • | • | • | • | • | • | • |
| | 34 | • | • | • | • | • | • | • | • | • |

CAT 2
ATPV (CAL/CM²)
8.6

D Women's FR Classic Twill Shirt

WFRS160

- 7-ounce, FR twill: 88% cotton/12% high-tenacity nylon
- Original Fit
- Button-down collar
- FR melamine buttons
- Two chest pockets with flaps and button closures
- Triple-stitched main seams for durability
- Shaped shirttail hem
- Imported

Style #/Color
WFRS160-DNY/Dark Navy
WFRS160-KHI/Khaki

| | | | | | |
|----|---|---|---|----|-----|
| XS | S | M | L | XL | XXL |
| • | • | • | • | • | • |

CAT 2
ATPV (CAL/CM²)
12

E Women's FR Canvas Work Pant

WFRB159

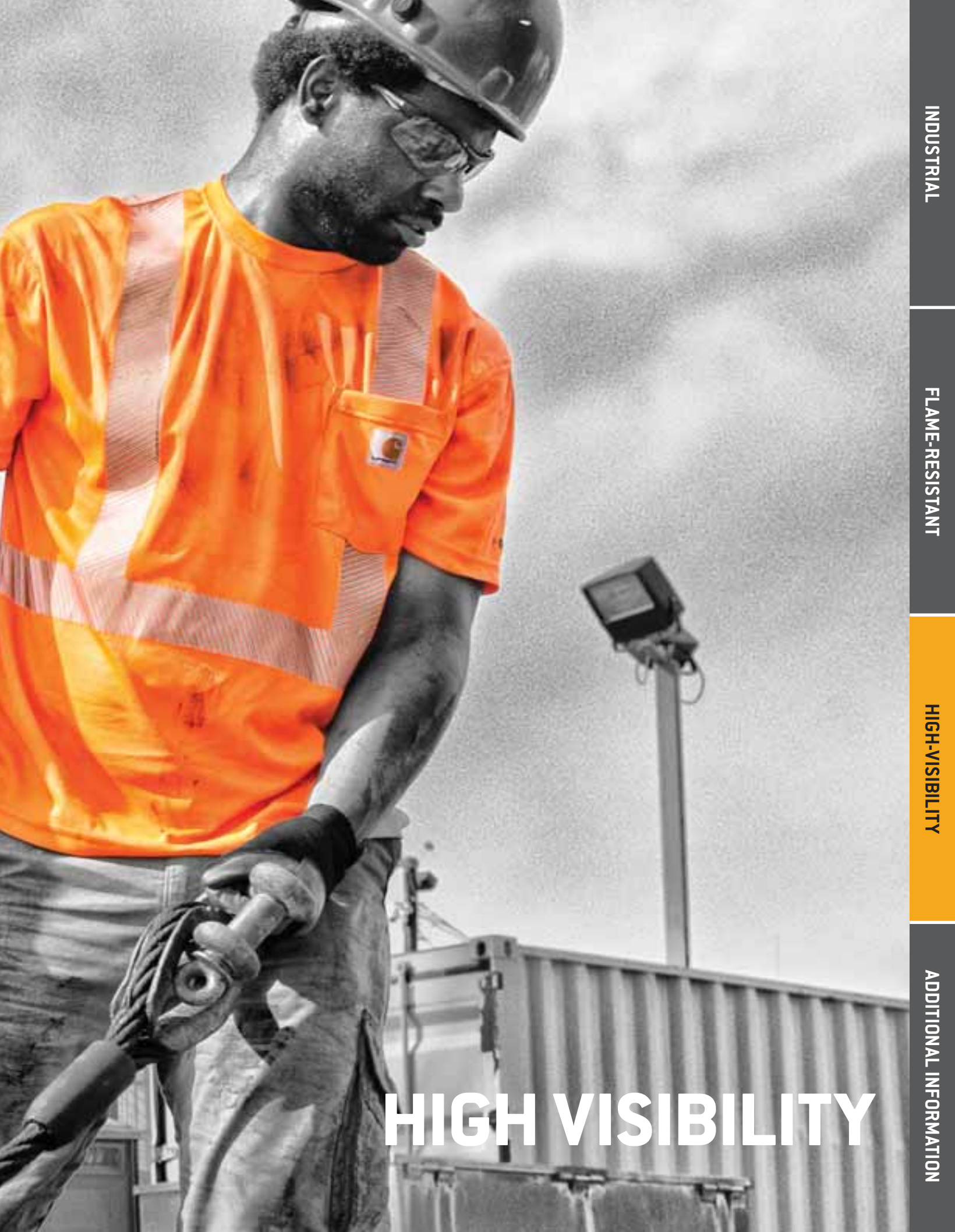
- Midweight 8.5-ounce, FR canvas: 88% cotton/12% high-tenacity nylon
- Original Fit
- Relaxed seat and thigh
- Contoured waistband
- Mid-rise waist
- Straight leg opening
- Imported

Style #/Color
WFRB159-DNY/Dark Navy
WFRB159-GKH/Golden Khaki

| | | | | | | | | | | |
|--------|----|---|---|---|----|----|----|----|----|----|
| | 2 | 4 | 6 | 8 | 10 | 12 | 14 | 16 | 18 | 20 |
| INSEAM | 28 | • | • | • | • | • | • | • | • | • |
| | 30 | • | • | • | • | • | • | • | • | • |
| | 32 | • | • | • | • | • | • | • | • | • |
| | 34 | • | • | • | • | • | • | • | • | • |







INDUSTRIAL

FLAME-RESISTANT

HIGH-VISIBILITY

ADDITIONAL INFORMATION

HIGH VISIBILITY

THE STRIPES YOU EARN JUST STEPPING FOOT ON THE JOB

Workplace safety is a two-way street. And doing your part to stay safe out there means making yourself visible to co-workers and cars. That's why, for all the dangerous jobs you do, Carhartt makes color enhanced and high-visibility gear designed to keep you working safely. From rugged, durable, water-repellent outerwear, to high-performing shirts equipped with Carhartt Force® technology is the workwear you want for when playing it safe just has to come with the territory.

HIGH-VISIBILITY WATERPROOF OUTERWEAR

250-denier, polyester shell plus 3M™ Scotchlite™ Reflective material, segmented trim #5510 maintains performance through 75 home launderings. Meets ANSI / ISEA 107. Snap-on hood with adjustable drawcord, two front utility bands at shoulder, heavy-duty zipper with storm flap, two inside pockets with hook-and-loop closure. Not only do you stay visible out there, you also stay dry.



A High-Visibility Class 3 Waterproof Sherwood Jacket
100787

- Left chest map pocket with waterproof zipper closure
- Brushed polyester quilt lining
- Two lower-front double pockets with top entry and side hand warmer entry
- Two inside pockets with hook-and-loop closure
- Imported

Style #/Color
100787-323/Brite Lime

| S | M | L | XL | 2XL | 3XL | 4XL | 5XL | |
|---|---|---|----|-----|-----|-----|-----|---------|
| • | • | • | • | • | • | • | • | REGULAR |

B High-Visibility Class 3 Waterproof Jacket
100499

- 100% polyester mesh lining in body
- 100% nylon taffeta lining in sleeves and hood
- Two lower-front pockets with zipper closure and storm flaps
- Two inside pockets with hook-and-loop closure
- Imported

Style #/Color
100499-323/Brite Lime

| S | M | L | XL | 2XL | 3XL | 4XL | 5XL | |
|---|---|---|----|-----|-----|-----|-----|---------|
| • | • | • | • | • | • | • | • | REGULAR |
| • | • | • | • | • | • | • | • | TALL |

C High-Visibility Class E Waterproof Pant
100497

- 100% polyester mesh lining in seat and thigh
- 100% nylon taffeta lining from knee down
- Full-leg, two-way zipper with double storm-channel flaps
- Extended chap-style double front cleanouts for knee pads
- Imported

Style #/Color
100497-323/Brite Lime

| S | M | L | XL | 2XL | 3XL | 4XL | 5XL | |
|---|---|---|----|-----|-----|-----|-----|---------|
| • | • | • | • | • | • | • | • | REGULAR |
| • | • | • | • | • | • | • | • | TALL |

HIGH-VISIBILITY OUTERWEAR

Heavyweight, 12-ounce, firm-hand 100% ring-spun cotton duck with a nylon lining quilted to artic-weight polyester insulation. Meets the performance requirements of CSA-Z96-09 Class 1. Yellow/Silver/Yellow 2-inch contrasting trim (RT86™ 220C C3000) with 3M™ Scotchlite™ Reflective material (#9740) ANSI approved reflective trim.



COLOR ENHANCED FLEECE HEADWEAR

100% polyester fleece for warmth with a Carhartt logo sewn on the front. One size fits all. Imported.



D High-Visibility Striped Duck Traditional Coat / Quilt-Lined
101694

- Fleece-lined insulated stand-up collar with flap to cover hidden snaps for detachable/optional hood
- Two-way brass zipper front with hook-and-loop closure
- Imported

Style #/Color
101694-001/Black

E Color Enhanced Beanie
100793

- Imported

Style #/Color
100793-323/Brite Lime
100793-824/Brite Orange

ONE SIZE FITS ALL

F Color Enhanced Fleece 2-in-1 Hat
100795

- Pull-down face mask
- Imported

Style #/Color
100795-323/Brite Lime
100795-824/Brite Orange

ONE SIZE FITS ALL

G High-Visibility Striped Duck Bib Overall / Quilt-Lined
101696

- Adjustable front-elastic suspenders and multi-compartment bib pocket
- Ankle-to-knee leg zippers with storm flaps with 360° visibility around legs
- Imported

Style #/Color
101696-001/Black

| S | M | L | XL | 2XL | 3XL | 4XL | 5XL | |
|---|---|---|----|-----|-----|-----|-----|---------|
| • | • | • | • | • | • | • | • | REGULAR |
| • | • | • | • | • | • | • | • | TALL |

| | 30 | 32 | 34 | 36 | 38 | 40 | 42 | 44 | 46 | 48 | 50 | 52 | 54 |
|----|----|----|----|----|----|----|----|----|----|----|----|----|----|
| 28 | • | • | • | • | • | • | • | • | • | • | • | • | • |
| 30 | • | • | • | • | • | • | • | • | • | • | • | • | • |
| 32 | • | • | • | • | • | • | • | • | • | • | • | • | • |
| 34 | • | • | • | • | • | • | • | • | • | • | • | • | • |
| 36 | • | • | • | • | • | • | • | • | • | • | • | • | • |

HIGH-VISIBILITY FLEECE

10.5-ounce, 100% polyester fabric with Stain Breaker® technology to release stains and 3M™ Scotchlite™ Reflective material, segmented trim #5510 maintains performance through 75 home launderings. Meets ANSI / ISEA 107. Each sweatshirt features a three-piece adjustable hood, brass-zipper front closure, stretchable, spandex-reinforced rib-knit cuffs and waistband, and two front hand warmer pockets.

323

824



A High-Visibility Zip-Front Class 3 Thermal-Lined Sweatshirt

100504

- Original Fit
- 100% polyester thermal lining including hood
- Imported

Style #/Color
100504-323/Brite Lime
100504-824/Brite Orange

| S | M | L | XL | 2XL | 3XL | 4XL | 5XL | |
|---|---|---|----|-----|-----|-----|-----|---------|
| • | • | • | • | • | • | • | • | REGULAR |
| • | • | • | • | • | • | • | • | TALL |

B High-Visibility Zip-Front Class 3 Sweatshirt

100503

- Original Fit
- Left pocket includes hidden storage pocket with hook-and-loop closure
- Imported

Style #/Color
100503-323/Brite Lime
100503-824/Brite Orange

| S | M | L | XL | 2XL | 3XL | 4XL | 5XL | |
|---|---|---|----|-----|-----|-----|-----|---------|
| • | • | • | • | • | • | • | • | REGULAR |
| • | • | • | • | • | • | • | • | TALL |

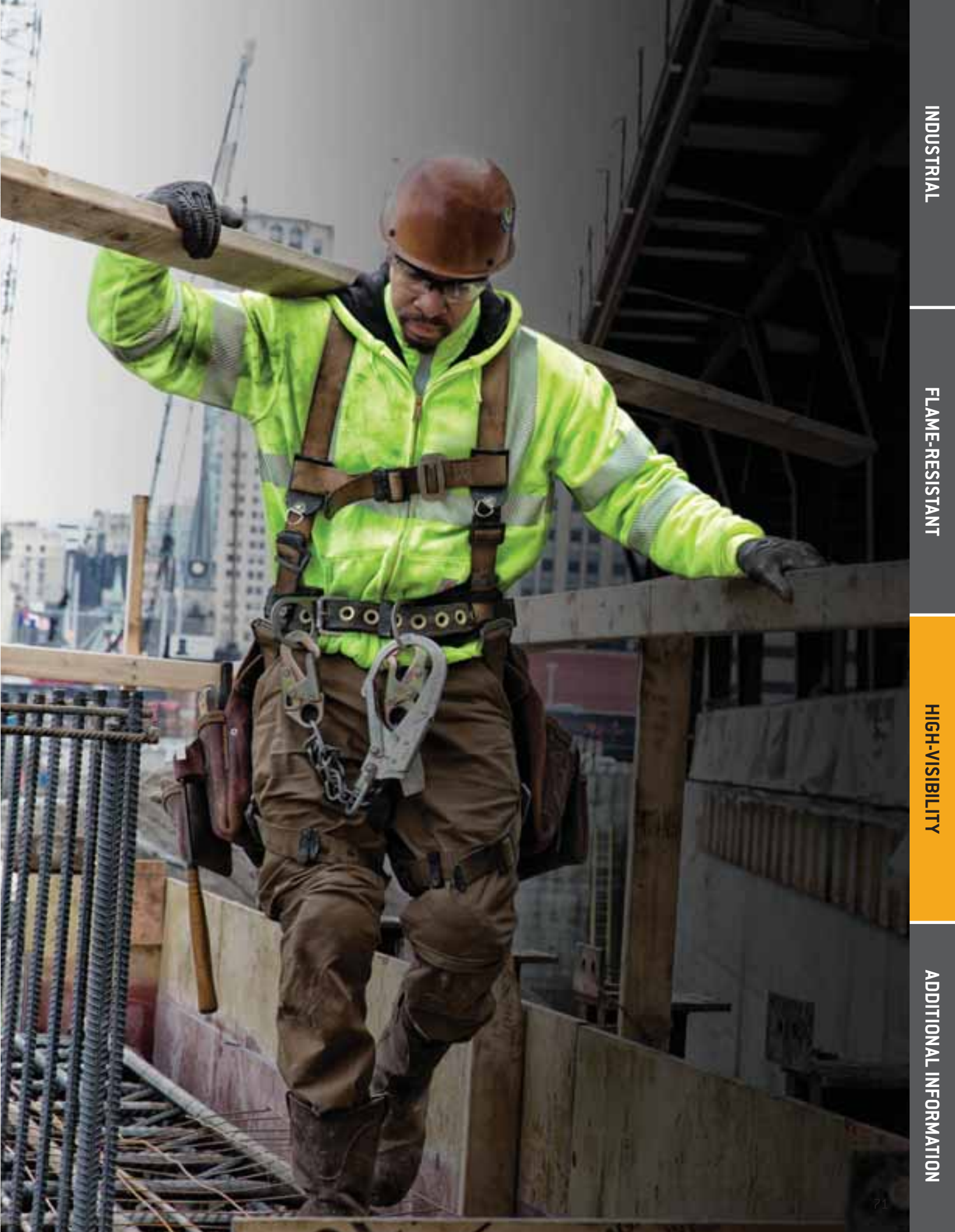
C High-Visibility Class 2 Vest

100501

- 100% polyester mesh
- Left-chest pocket with pen stall
- Hook-and-loop closure
- 3M™ Scotchlite™ Reflective material, #8906 maintains performance through 30 home launderings
- Imported

Style #/Color
100501-323/Brite Lime
100501-824/Brite Orange

| S | M | L | XL | 2XL | 3XL | 4XL | 5XL | |
|---|---|---|----|-----|-----|-----|-----|---------|
| • | • | • | • | • | • | • | • | REGULAR |



INDUSTRIAL

FLAME-RESISTANT

HIGH-VISIBILITY

ADDITIONAL INFORMATION

WORKWEAR YOU WANT TO BE SEEN IN

Feeling comfortable on the job goes a long way towards staying safe. That's why we've added the Force® technologies of FastDry® and Stain Breaker® into our men's Relaxed Fit, 4.25-ounce bird's-eye knit 100% polyester color enhanced and high-visibility shirts. With the power to wick away sweat and release stains in the wash, a tagless neck label,



A Force Color Enhanced Short-Sleeve T-Shirt

100493

- Rib-knit crewneck collar
- Imported

Style #/Color
100493-323/Brite Lime
100493-824/Brite Orange

| S | M | L | XL | 2XL | 3XL | 4XL | 5XL | |
|---|---|---|----|-----|-----|-----|-----|---------|
| • | • | • | • | • | • | • | • | REGULAR |
| • | • | • | • | • | • | • | • | TALL |



B Force Color Enhanced Long-Sleeve T-Shirt

100494

- Rib-knit crewneck collar and cuffs
- Imported

Style #/Color
100494-323/Brite Lime
100494-824/Brite Orange

| S | M | L | XL | 2XL | 3XL | 4XL | 5XL | |
|---|---|---|----|-----|-----|-----|-----|---------|
| • | • | • | • | • | • | • | • | REGULAR |
| • | • | • | • | • | • | • | • | TALL |

C Force Color Enhanced Graphic Long-Sleeve T-Shirt

102181

- Rib-knit crewneck collar and cuffs
- Carhartt graphic on left sleeve
- Imported

Style #/Color
102181-323/Brite Lime

| S | M | L | XL | 2XL | 3XL | 4XL | 5XL | |
|---|---|---|----|-----|-----|-----|-----|---------|
| • | • | • | • | • | • | • | • | REGULAR |
| • | • | • | • | • | • | • | • | TALL |



left chest pocket, and side-seamed construction to minimize twisting, you stay looking and feeling comfortable all throughout your shift. 3M™ Scotchlite™ Reflective material, segmented trim #5510 maintains performance through 75 home launderings. Meets ANSI / ISEA 107.

HIGH-VISIBILITY SHIRTS + FORCE



323

824



D



E

D Force High-Visibility Short-Sleeve Class 2 T-Shirt

100495

- Rib-knit crewneck collar
- 3M™ Scotchlite™ Reflective Material
- Imported

Style #/Color
100495-323/Brite Lime
100495-824/Brite Orange

| S | M | L | XL | 2XL | 3XL | 4XL | 5XL | |
|---|---|---|----|-----|-----|-----|-----|---------|
| • | • | • | • | • | • | • | • | REGULAR |
| • | • | • | • | • | • | • | • | TALL |

E Force High-Visibility Long-Sleeve Class 3 T-Shirt

100496

- Rib-knit crewneck collar and cuffs
- 3M™ Scotchlite™ Reflective Material
- Imported

Style #/Color
100496-323/Brite Lime
100496-824/Brite Orange

| S | M | L | XL | 2XL | 3XL | 4XL | 5XL | |
|---|---|---|----|-----|-----|-----|-----|---------|
| • | • | • | • | • | • | • | • | REGULAR |
| • | • | • | • | • | • | • | • | TALL |





INDUSTRIAL

FLAME-RESISTANT

HIGH-VISIBILITY

ADDITIONAL INFORMATION

ADDITIONAL INFORMATION

WORKWEAR MADE BRIGHT, GETS THE JOB DONE RIGHT

IMPROVE VISIBILITY WITH REFLECTIVE STRIPING. ADD TO ANY FR COAT, JACKET, BIB OR COVERALL.

Carhartt uses 3M™ Scotchlite™ Reflective Material because 1 in 3 garments that don't use 3M™ Scotchlite™ Reflective Material are not bright enough to meet relevant safety standards right out of the package, even though they are labeled as compliant*

Carhartt FR and 3M: Outworking them all to keep workers safe.

FOR MORE INFORMATION OR TO PLACE AN ORDER, PLEASE CALL CARHARTT AT 800-833-3118 AND ASK FOR CYC.



*Based on a study by 3M of seventy-nine vests purchased on the open market (all using components other than 3M™ Scotchlite™ Reflective Material), 33% failed the ANSI 107 test for initial brightness. These data were verified by third party testing.

3M and Scotchlite are trademarks of 3M, used under license in Canada.



OSHA General Duty Clause

- Employers are required to provide their employees with a place of employment that is free from recognizable hazards that are causing or likely to cause death or serious harm to employees.

OSHA 1910.269

- Federal regulation that defines the safety practices of employees working in the generation, transmission and distribution of electricity.
- Prohibits clothing that, when exposed to flames or arcs, could increase the extent of wearer injury. Employers must determine appropriate clothing based on an evaluation of potential hazards in the work environment. Clothing made from flame-resistant materials is acceptable under the Rule; *i.e.*, clothing that meets the requirements of ASTM F1506.

- The employer shall ensure that each employee exposed to potential hazards from electric arcs wears protective clothing and other protective equipment with an arc rating greater than or equal to the heat energy estimate whenever that estimate exceeds the heat energy of 2.0 cal/cm².

- The 2014 revision to the regulation requires that as of April 1, 2015, employers must provide protective equipment sufficient to cover the employee's entire body.
- Acceptable FR clothing shall conform to the requirements of ASTM F-1506, and must have an appropriate arc rating [Arc Thermal Performance Value [ATPV], or Breakopen Threshold Energy [EBT]. The arc rated clothing must be rated at or above the potential hazard from an arc flash exposure.



National Electric Safety Code

- National Electrical Safety Code (NESC) sets rules for safeguarding personnel during installation, operation, or maintenance of electric supply and communication lines and associated equipment.

- States that employers must conduct a hazard analysis to determine the potential arc exposure for employees working on or near energized equipment. Arc rated clothing required if exposure is greater than 2 cal/cm².



Standard for electrical safety in the workplace

- The 70E standard addresses electrical hazards in the workplace and supplements the NESC by focusing on protecting the worker from electrical hazards. The objective of this standard is to provide protection to workers based on the potential electrical exposure energy to which they could be exposed. 70E mandates that employers conduct a hazard risk assessment to determine the potential arc exposure for employees who work on or near energized parts or equipment.

- NFPA 70E requires that employees wear proper arc-rated Flame Resistant (FR) clothing whenever there is possible exposure to an arc flash event sufficient to cause a second degree burn. Such FR protective clothing must be rated for protection from electric arcs so they can be properly matched to the appropriate hazard levels. This arc rating, or ATPV, appears on the labeling of all FR protective apparel for easy referencing. Matching the arc rating of the Flame Resistant apparel with the hazard rating maximizes worker protection against the chance of burn injury or death.



Standard on flame-resistant garments for protection of industrial personnel against flash fire

- NFPA 2112 standard provides minimum requirements for the design, construction, evaluation and certification of flame resistant (FR) clothing for use by industrial personnel exposed

- to potential flash fire situations. It does not attempt to provide any guidance on matching the PPE to the quantified hazards – that is what NFPA 2113 is designed for.



Standard on the fundamentals of combustible dust

- NFPA 652 standard provides the general requirements for managing combustible dust fire and explosion hazards. It states that when FR clothing is required, it must comply

- with the requirements of NFPA 2112 and be selected, procured, inspected, worn, and maintained in accordance with NFPA 2113.



Standard on selection, care, use, and maintenance of flame-resistant garments for protection of industrial personnel against flash fire

- Provides minimum requirements for the selection, care, use, and maintenance of Flame Resistant garments compliant with NFPA 2112 for use in potential flash fire situations. This standard

- reduces the potential risks caused by incorrect maintenance, contamination, or damage to FR clothing.



American National Standard for high-visibility safety apparel and accessories

- ANSI/ISEA 107 provides performance requirements for conspicuous materials to be used in high-visibility safety apparel (HVSA) and specifies minimum amounts of background, retroreflective and combined-performance materials. The 2015 edition continues to present three performance classes of garments based on the amount of visible materials and design

- attributes incorporated into the final garment configuration. The standard now identifies garment types based on expected use settings and work activities being performed. These are designated as off-road (type O), roadway and temporary traffic control (type R), or public safety activities (type P).

FREQUENTLY ASKED QUESTIONS

1 Who is Carhartt Flame-Resistant (FR) clothing designed for?

Carhartt FR Clothing is designed for electricians and workers in the utility, oil, gas and petrochemical fields who are at risk of exposure to electric arc flashes and flash fires, which could cause severe or fatal burn injuries. Typical candidates for FR clothing include electric linemen, pipeline and refinery workers, as well as industrial electricians.

2 How does Carhartt FR clothing help protect against burn injury?

Through the use of flame-resistant chemicals or fabric blends, Carhartt FR Clothing is designed to self-extinguish within seconds after the source of ignition is removed, limiting the degree of burn and body burn percentage. It is not designed to be flameproof; it is flame-resistant.

3 Can the flame-resistant chemicals be washed out?

No. Carhartt FR Clothing is guaranteed to be flame-resistant for the useful life of the garment regardless of the number of launderings, provided garment-care instructions are followed.

4 How can Carhartt FR clothing be distinguished from traditional Carhartt clothing?

Carhartt FR Clothing is clearly identified with a "FR Carhartt" patch in place of the traditional Carhartt patch. Product hang tags and HRC labels also help distinguish Carhartt flame-resistant products.

5 What is a PPE category?

A PPE category is a rating for FR clothing based on the ATPV rating that indicates the level of protection the garment provides. There are four PPE categories ranging from 1 to 4, with a PPE category of 1 representing the least protection, and a PPE category of 4 representing the most protection. The NFPA 70E consensus standard assigns these categories based on the electrical maintenance tasks to be performed, and each PPE category relates to a specific range of ATPV's. For example, PPE category 2 would include ATPVs greater or equal to 8 cal/cm² but less than 25 cal/cm².

6 What is an ATPV?

An Arc Thermal Performance Value (ATPV) is a rating assigned to flame-resistant clothing indicating the level of electrical arc flash protection provided. Higher-weight (*e.g.*, thicker, denser) fabrics typically have higher ATPVs and provide increased protection (as does the layering of FR clothing). All Carhartt FR Clothing has the ATPV marked on the inside label for easy reference.

7 What is EBT?

Like ATPV, Breakopen Threshold Energy (EBT) is a rating assigned to FRC indicating the level of protection provided. EBT is used when ATPV cannot be measured due to flame-resistant fabric breakopen. EBT is also measured in calories per centimeter squared (cal/cm²).

8 Can Carhartt FR clothing be repaired?

Yes, Carhartt FR Clothing can be repaired, but repairs must be made with fabrics and sewing threads that have at least the same FR characteristics as the original garment.

9 Is flame-resistant thread required for embroidery applications?

None of the current regulations governing the use of flame-resistant clothing specifically require the use of flame-resistant thread for embroidery applications. However, Carhartt recommends using flame-resistant thread for embroidery or emblem attachment.

10 Can I use DEET on flame-resistant clothing?

No. DEET is one of the most effective mosquito repellents on the market, but it should only be used on the skin, never on FR clothing. For the most effective mosquito and tick protection, use DEET-based repellents on the skin (especially on exposed skin) and use a permethrin (the active ingredient in most lice shampoos) product washed into or applied to flame-resistant clothing. These products do not add any appreciable flammability to FR clothing and therefore do not affect its flame-resistant properties. When using permethrin in a spray form, use the **WATER-BASED** formulas only. Propellants are almost always flammable in this application, so the powder form washed into the clothing or the **WATER-BASED** spray formula is recommended.

PROPER CARE AND USE OF CARHARTT FR

PROPER CARE

Follow the **manufacturer care instructions** located on the inside tag of each FR garment, and these guidelines when home laundering your Carhartt FR:

- Wash garment with normal laundry detergent separately from non-FR garments in cold-warm water
- **DO NOT** use bleach (or detergents containing bleach/hydrogen peroxide)
- **DO NOT** use stain remover
- **DO NOT** use starch
- **DO NOT** use fabric softener/dryer sheets

PROPER USE

Follow **your company's** safety requirements to determine the standards and calorie rating your garment must meet when working in hazardous areas.

- Carhartt recommends flame resistant clothing be worn as base layers under FR garments
- Garments should have a reasonable fit with no modifications that will reduce its effectiveness
- Prevent additional exposure to skin (keep garments buttoned and sleeves rolled down)
- Keep shirts tucked in when in a hazardous area
- Do not apply DEET to FR clothing — **DEET IS FLAMMABLE**

USEFUL LIFE & REPAIRS

Regularly inspect your FR garments. Replace garments once they are past their useful life:

- Torn/ripped fabric
- Open seams/holes
- Fabric is frayed or threadbare
- Garment has been bleached
- Garment is soiled with flammable substances

Carhartt FR clothing can be repaired. The FR fabrics and Nomex® threads used for repairs should be equivalent in performance and FR characteristics to those used in the original construction of the garment.

CARHARTT FR IS GUARANTEED FLAME-RESISTANT FOR THE USEFUL LIFE OF THE GARMENT, PROVIDED MANUFACTURER CARE INSTRUCTIONS ARE FOLLOWED

CARHARTT FR LAYERED TESTING

Many people ask about arc ratings when flame-resistant clothing is layered. The total arc rating cannot be determined by adding the ratings of the two items. In most cases the total arc rating is higher than the number calculated by simply adding the arc ratings from the two items. Layered testing is the only way to determine the total arc rating for layered FR garments.

Carhartt has conducted layered testing for a variety of combinations, using some of our most popular FR clothing styles. The resulting layered arc rating of the various combinations are listed on the table below for your reference.

| THIS STYLE | LAYERED OVER THIS STYLE | EQUALS THIS ARC RATING |
|---|--|-------------------------------|
| FRS160 WFRS160 (8.6 cal/cm ²) | 100234 100235 100237 (8.9 cal/cm ²) | ATPV = 30 cal/cm ² |
| FRS003 (8.7 cal/cm ²) | 100234 100235 100236 (8.9 cal/cm ²) | ATPV = 28 cal/cm ² |
| 101017 (11 cal/cm ²) | 100234 100235 100237 (8.9 cal/cm ²) | ATPV = 33 cal/cm ² |

Testing Conducted for Carhartt Inc. by Kinectrics High Current Laboratory, Toronto, Ontario, Canada



CUSTOM NON-STOCK SIZING

Some styles come in sizes that don't work with the majority of customers. So when one or more of these Non-Stock Sizes is needed, they require longer lead times (typically 8-10 weeks), freight charges (free above \$500), order increments (by style multiples of minimum order number) and an "ALL ORDERS FINAL" return policy (no returns outside manufacturer defect). For more information on placing custom order, call Customer Service at (800) 786-3916. Orders can be placed by email at Industrial_Sales@carhartt.com or by faxing them to (800) 217-2895.

| Refers to Style # | Style # | Product Name |
|-------------------|---------|--|
| 100170 | 101659 | FR Utility Denim Double-Front Jean – Relaxed Fit |
| 100234 | 101669 | FR Force Cotton Short-Sleeve T-Shirt |
| 100235 | 101670 | FR Force Cotton Long-Sleeve T-Shirt |
| 100237 | 101671 | FR Force Cotton Long-Sleeve Henley |
| 100410 | 102651 | Force Cotton Delmont Short-Sleeve T-Shirt |
| 101483 | 102633 | Relaxed-Fit Holter Jean |
| 100493 | 102631 | Force Color Enhanced Short-Sleeve T-Shirt |
| 100632 | 102649 | Rain Defender® Rutland Thermal-Lined Hooded Zip-Front Sweatshirt |
| 100783 | 101644 | FR Extremes® Arctic Parka |
| 100784 | 101645 | FR Extremes® Arctic Coat |
| 100785 | 101638 | FR Extremes® Arctic Biberall |
| 100791 | 101663 | FR Washed Duck Work Dungaree |
| 101017 | 101647 | FR Traditional Twill Coverall |
| 101029 | 101634 | FR Mock Neck Vest |
| 101299 | 102972 | Crowley Jacket |
| 101576 | 101827 | FR Force Rugged Flex® Quarter-Zip Fleece |
| 101577 | 101828 | FR Force Rugged Flex® Hooded Fleece |
| 101618 | 101642 | FR Duck Traditional Coat / Quilt-Lined |
| 101621 | 101649 | FR Duck Active Jac / Quilt-Lined |
| 101622 | 101654 | FR Midweight Canvas Active Jac / Quilt-Lined |
| 101623 | 101650 | FR Duck Bomber Jacket / Quilt-Lined |
| 101625 | 101652 | FR Lanyard Access Jacket / Quilt-Lined |
| 101626 | 101640 | FR Duck Bib Overall / Quilt-Lined |
| 101627 | 101641 | FR Duck Bib Overall / Unlined |
| 101628 | 102089 | FR Striped Duck Bib Overall / Quilt-Lined |
| 101695 | 102091 | FR Striped Duck Traditional Coat / Quilt-Lined |
| 101698 | 102594 | FR Force Cotton Hybrid Shirt |
| 101699 | 102086 | FR Striped Force Cotton Long-Sleeve T-Shirt |
| 101703 | 102088 | FR Striped Duck Bib Overall / Unlined |
| 101705 | 102090 | FR Striped Coverall |
| 102150 | 102643 | FR Deluxe Coverall |

| Refers to Style # | Style # | Product Name |
|-------------------|---------|---|
| 102179 | 102957 | FR Full Swing® Quick Duck® Jacket |
| 102182 | 102956 | FR Full Swing® Quick Duck® Coat |
| 102291 | 102630 | Rugged Flex® Rigby Dungaree |
| 102905 | 102995 | FR High-Visibility Force Long-Sleeve T-Shirt |
| FRB004 | 101657 | FR Utility Jean – Relaxed Fit |
| FRB13 | 101656 | FR Signature Denim Dungaree |
| FRB100 | 101658 | FR Signature Denim Jean – Relaxed Fit |
| FRB159 | 101661 | FR Midweight Canvas Pant – Loose Original Fit |
| FRB240 | 101662 | FR Canvas Cargo Pant |
| FRS003 | 101681 | FR Lightweight Twill Shirt |
| FRS160 | 101680 | FR Classic Twill Shirt |
| C003 | 102646 | Duck Traditional Coat |
| J130 | 102152 | Quilted-Flannel-Lined Sandstone Active Jac |
| J140 | 102151 | Quilted-Flannel-Lined Duck Active Jac |
| J162 | 102644 | Shoreline Jacket |
| R01 | 102157 | Duck Bib Overalls |
| R41 | 102647 | Quilt-Lined Zip-To-Thigh Bib Overalls |
| B11 | 102170 | Washed-Duck Work Dungaree |
| B13 | 102169 | Loose/Original-Fit Work Dungaree |
| B17 | 102168 | Relaxed-Fit Tapered-Leg Jean |
| B136 | 103003 | Double-Front Work Dungaree |
| B151 | 102171 | Canvas Work Dungaree |
| K84 | 102982 | Workwear Short-Sleeve Henley |
| K87 | 102652 | Workwear Pocket Short-Sleeve T-Shirt |
| K121 | 102980 | Midweight Hooded Pullover Sweatshirt |
| K122 | 102650 | Midweight Hooded Zip-Front Sweatshirt |
| K126 | 102653 | Workwear Pocket Long-Sleeve T-Shirt |
| K128 | 102983 | Workwear Long-Sleeve Henley |
| K570 | 102981 | Contractor/Es Work Polo |
| V33 | 102645 | Mock-Neck Vest |
| WFRB159 | 102133 | Women's FR Canvas Work Pant |

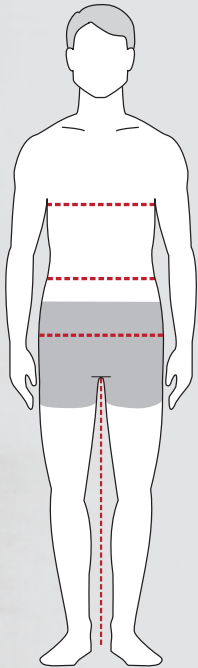
SIZING CHARTS – MEN'S

MEN'S BODY MEASUREMENTS (ALL EXCEPT NON-FR BIB OVERALLS, BIBERALLS & COVERALLS)

| | SMALL | | MEDIUM | | LARGE | | X-LARGE | | 2X-LARGE | | 3X-LARGE | | 4X-LARGE | | 5X-LARGE | | 6X-LARGE | |
|------------|-------|----|--------|----|-------|----|---------|----|----------|----|----------|----|----------|----|----------|----|----------|----|
| Chest | 34 | 36 | 38 | 40 | 42 | 44 | 46 | 48 | 50 | 52 | 54 | 56 | 58 | 60 | 62 | 64 | 66 | 68 |
| Waist | 28 | 30 | 32 | 34 | 36 | 38 | 40 | 42 | 44 | 46 | 48 | 50 | 52 | 54 | 56 | 58 | 60 | 62 |
| Hip (Seat) | 34 | 36 | 38 | 40 | 42 | 44 | 46 | 48 | 50 | 52 | 54 | 56 | 58 | 60 | 62 | 64 | 66 | 68 |

NOTE: If your measurement falls between sizes, buy the larger size.

HOW TO MEASURE



Chest:

Measure just under arms and across shoulder blades holding the tape firm and level. If your chest falls between sizes, order the next size up.

Natural Waist:

Bend side to side and find the natural bend in your body; this is your natural waist. Note: It may not be the smallest point.

Hip/Seat:

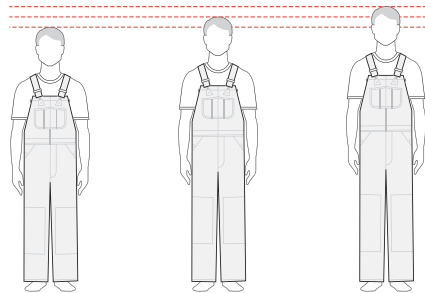
Measure the fullest point between your natural waist and crotch.

Inseam:

Measure from your crotch to the desired length on body. You may also measure pants that you currently own and like. Lay the garment flat and smooth out. Measure on the front from the crotch point along the seam to the hem for the inseam length.

For best results, measure over your undergarments.

HEIGHT CHART



SHORT
5'3" to 5'7"

REGULAR
5'7" to 5'11"

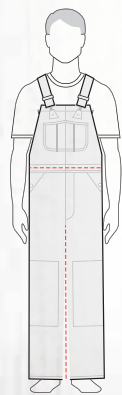
TALL
5'11" to 6'3"

PANTS & SHORTS FITS

| | |
|---------------------------------|------------------------|
| Straight Traditional Fit | Slim seat and thigh |
| Relaxed Fit | Relaxed seat and thigh |
| Loose Original Fit | Full seat and thigh |

TOPS FITS

| | |
|---------------------|--------------------------|
| Slim Fit | Our leanest fit |
| Relaxed Fit | A closer fit to the body |
| Original Fit | The most room to move |



BIB OVERALLS

STYLE #: R27 / R41

- If you fall between sizes, size up
- Size to the largest part of your waist
- Order based on your normal pant inseam. For example, if you wear a 32" inseam pant, you would wear a 32" inseam bib overall

| WAIST MEASUREMENT <i>at largest point</i> | 28 | 30 | 32 | 34 | 36 | 38 | 40 | 42 | 44 | 46 | 48 | 50 | 52 | 54 | 56 | 58 |
|---|----|----|----|----|----|----|----|----|----|----|----|----|----|----|----|----|
| Recommended Size If Worn With Undergarments or Lightweight Layers | 30 | 32 | 34 | 36 | 38 | 40 | 42 | 44 | 46 | 48 | 50 | 52 | 54 | 56 | 58 | 60 |
| Recommended Size If Worn Over Heavier Shirt & Pants | 32 | 34 | 36 | 38 | 40 | 42 | 44 | 46 | 48 | 50 | 52 | 54 | 56 | 58 | 60 | — |



INDUSTRIAL

FLAME-RESISTANT

HIGH-VISIBILITY

ADDITIONAL INFORMATION

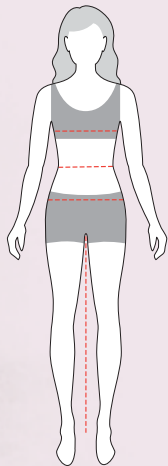
SIZING CHARTS – WOMEN'S

WOMEN'S BODY MEASUREMENTS

| | X-Small | Small | | Medium | | Large | | X-Large | | XXL | |
|----------------------|---------|-------|----|--------|----|-------|----|---------|-----|-----|-----|
| | 2 | 4 | 6 | 8 | 10 | 12 | 14 | 16 | 18 | 20 | |
| Bust | 33 | 34 | 35 | 36 | 37 | 38½ | 40 | 41½ | 43½ | 45½ | 47½ |
| Natural Waist | 27 | 28 | 29 | 30 | 31 | 32½ | 34 | 35¾ | 38 | 40¼ | 42½ |
| Hip (Seat) | 36 | 37 | 38 | 39 | 40 | 41½ | 43 | 44½ | 46½ | 48½ | 50½ |

- For Outerwear, Bibs, and Tops: If you prefer a slimmer fit or are between sizes, try sizing down.
- For Bottoms: If your measurement falls between sizes, buy the larger size.

HOW TO MEASURE



Bust:

Measure the fullest part of your bust, keeping the measuring tape parallel to the floor.

Natural Waist:

Bend side to side and find the natural bend in your body; this is your natural waist. Note: It may not be the smallest point.

Hips:

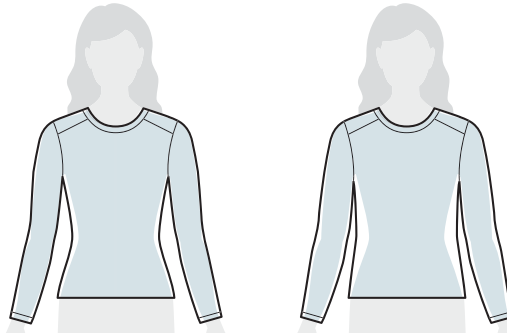
Measure the fullest part of your hips, approximately 8" below the natural waist.

Inseam:

Measure from your crotch down to the desired length on body. You may also measure pants that you currently own and like. Lay the garment flat and smooth out. To get the inseam length, measure on the front from the crotch point, along the seam, to the hem.

For best results, measure over your undergarments.

WOMEN'S TOPS FIT



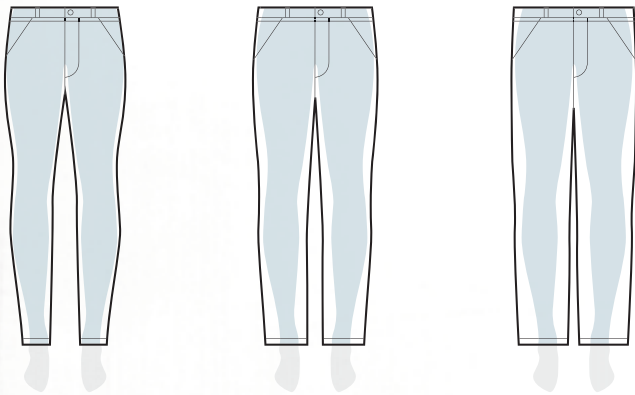
Slightly Fitted

Fit flows over the contours of the body
Gives shape without being snug

Relaxed Fit

Allows the most ease over body
Subtle shape for maximum range of motion

WOMEN'S PANT FIT



Slim Fit

Mid-rise sits just below the waist
Fitted through the hip and thigh
Tough enough for work, feminine enough for the weekends

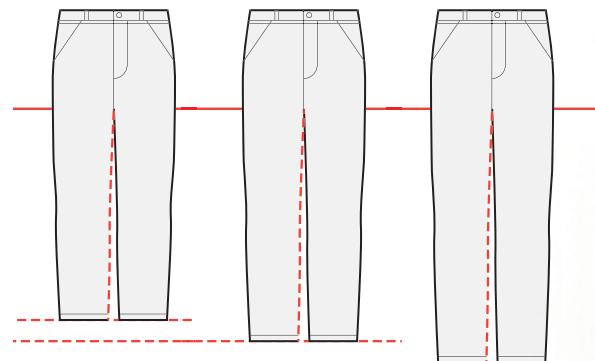
Original Fit

Mid-rise sits just below the waist
Easy fit through the hip and thigh
A classic look you can wear anywhere and everywhere

Relaxed Fit

Mid-rise sits just below the waist
Relaxed through the hip and thigh
Our roomiest fit gives you plenty of room to move throughout the workday

PANT INSEAM LENGTH CHART



Short

Inseam Measurement: 29"-30"

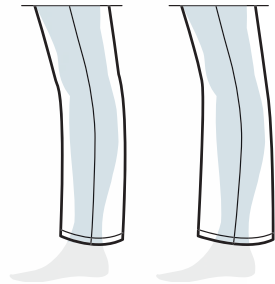
Regular

Inseam Measurement: 31"-32"

Tall

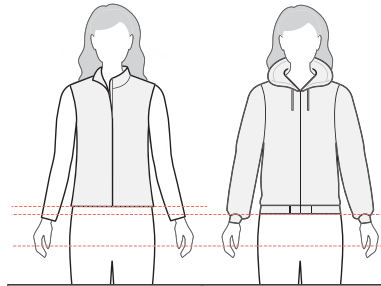
Inseam Measurement: 33"-34"

LEG OPENINGS

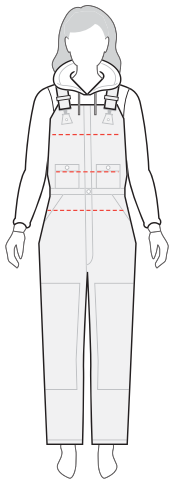


| | |
|---------------------|-----------------|
| Straight Leg | Boot-cut |
|---------------------|-----------------|

OUTERWEAR CENTER BACK LENGTHS



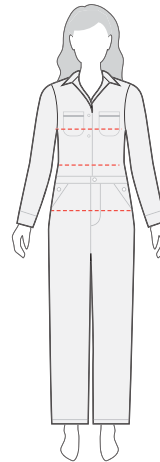
| Vests | Jackets |
|--------------|----------------|
| 24"-26.5" | 25.5"-29" |



BIB OVERALL (LINED)

STYLE #: 102743

- Size to the largest part of your body
- Reference the inseam length chart and body measurement chart for guidance
- Measurements assume bib overall is layered over cold weather clothing. If you won't be layering, you may need to size down.



COVERALL (UNLINED)

STYLE #: 102450

- Size to the largest part of your body
- Reference the inseam length chart and body measurement chart for guidance
- If you plan to layer over pants, you may need to size up. If you won't be layering, you may need to size down.

LICENSEES

CARHARTT LICENSEE INFORMATION

Carhartt licenses the manufacture and marketing of certain products to other companies. For sales information, marketing materials and product images for Carhartt-licensed products, please contact the company representatives listed below.

CARHARTT FOOTWEAR



Black Diamond Group
Contact: Terri Murray
(781) 939-7842
tmurray@bdboots.com
Hours: 8:30am – 5:00pm EST

*If there are any problems contacting Terri directly,
you can call Customer Service at (855) 277-8944*

CARHARTT MEDICAL SCRUBS



CID Resources, Inc.
(877) 554-3306
contactus@cidresources.com

CID RESOURCES, INC.

CARHARTT BELTS & WALLETS



American Accessories
(866) 892-0491
orders@americanaccessoriesinc.com
Hours: 8am – 5pm EST

CARHARTT SAFETY EYEWEAR



Pyramex Safety
Contact: David Fish
dfish@pyramexsafety.com
Phone: (800) 736-8673
Fax: (901) 861-4967
Hours: Monday–Friday
7:30am – 5:30pm Central

CARHARTT SOCKS



Renfro Corporation
Contact: Kevin Venable
(336) 719-8415
kevinvenable@renfro.com

CARHARTT GLOVES



Gordini
Contact: Matt Roberts
(800) 467-3464
Matt_Roberts@gordini.com

CARHARTT WORK BAGS, PACKS & GEAR



5 Horizons Group, LLC
Contact: Lisa Giess
Phone: (855) 670-9930 Ext. 126
lisa.giess@5horizonsgroup.com
Hours: 8:30am – 5pm CST

Carhartt Core Style Reference Definition – Style Page

Customers consistently choose Carhartt Core styles year after year, and we have set higher levels of maintained inventory for these styles. This list of Carhartt Core will evolve and expand over the next year as we execute our inventory strategy to better serve our customers and consumers.

Core Styles Featured in 2017 Industrial Catalog

| Style | Color(s) | Product Description |
|--------|-----------------------------------|--|
| A18 | BLK, CLH, BRN, BOG, NVY, BLM, DKB | Acrylic Watch Hat |
| B11 | BRN, DES, BLK | Washed-Duck Work Dungaree |
| B13 | DST, DPS, STW | Loose / Original-Fit Work Dungaree |
| B17 | DST, STW | Relaxed-Fit Tapered-Leg Jean |
| B136 | DKB | Washed-Duck Double-Front Work Dungaree |
| B147 | TAN | Canvas Work Short |
| B151 | TAN, DKH | Canvas Work Dungaree |
| J130 | 211, BLK | Sandstone Active Jacket |
| J140 | BLK, BRN | Quilted-Flannel-Lined Duck Active Jac |
| K84 | BLK, NVY, DES, HGY | Workwear Pocket Short-Sleeve Henley |
| K87 | NVY, HGY, BLK, DES, BLS, CHR, HTG | Workwear Pocket Short-Sleeve T-Shirt |
| K121 | BLK, 472 | Midweight Hooded Sweatshirt |
| K122 | BLK, 472 | Midweight Hooded Zip-Front Sweatshirt |
| K126 | NVY, BLK, HGY, CHR, HTG, BLS | Workwear Pocket Long-Sleeve T-Shirt |
| K128 | BLK, NVY, HGY | Workwear Pocket Long-Sleeve Henley |
| K570 | BLK, NVY, HGY, MOS | Contractors Work Pocket Polo |
| R41 | BLK, BRN | Quilt-Lined Zip-to-Thigh Bib Overalls |
| V33 | DKB | Mock Neck Vest |
| WA018 | WWH | Women's Acrylic Watch Hat |
| WJ130 | DKB | Women's Sandstone Active Jac |
| WJ141 | BLK, DWN | Women's Sandstone Sierra Jacket |
| WV001 | DKB | Women's Sandstone Mock Neck Vest |
| FRA003 | DNY | Flame-Resistant Double-Layer Force Knit Balaclava |
| FRB13 | DNM | Flame-Resistant Signature Denim Dungaree |
| FRB100 | DNM | Flame-Resistant Signature Denim Jean – Relaxed-Fit |
| FRB159 | DNY, GKH | Flame-Resistant Midweight Canvas Jean – Loose Fit |
| FRB240 | DNY, GKH | Flame-Resistant Canvas Cargo Pant |
| FRS160 | KHI, DNY, GRY | Flame-Resistant Classic Twill Shirt |
| 100235 | 410, 051, 250 | Flame-Resistant Force Cotton Long-Sleeve T-Shirt |
| 100237 | 410, 051, 250 | Flame-Resistant Force Cotton Long-Sleeve Henley |
| 100410 | 001, 034,026,412,316 | Force Cotton Delmont Short-Sleeve T-Shirt |
| 100493 | 323 | High-Visiblity Force Color Enhanced Short-Sleeve T-Shirt |
| 100495 | 323 | High-Visibility Force Short-Sleeve Class 2 T-Shirt |
| 100632 | 001,472 | Rain Defender® Rutland Thermal Lined Hodded Zip-Front Sweatshirt |
| 100791 | 246 | Flame-Resistant Washed Duck Work Dungaree |
| 101483 | 968 | Relaxed-Fit Holter Jean |
| 101618 | 211, 410 | Flame-Resistant Duck Traditional Coat / Quilt-Lined |
| 101621 | 211, 410 | Flame-Resistant Duck Active Jac / Quilt-Lined |
| 101623 | 410, 211 | Flame-Resistant Duck Bomber Jacket |
| 101626 | 211, 410 | Flame-Resistant Duck Bib Overall / Quilt-Lined |
| 101627 | 211, 410 | Flame-Resistant Duck Bib Overall / Unlined |
| 101698 | 410, 250 | Flame-Resistant Force Cotton Button Down Shirt |
| 102150 | 410, 250 ,033 | Flame-Resistant Deluxe Coverall |
| 102179 | 410, 211 | Flame-Resistant Full Swing® Quick Duck® Jacket |
| 102182 | 410, 211 | Flame-Resistant Full Swing® Quick Duck® Coat |
| 102291 | 039, 253 | Rugged Flex® Rigby Dungaree |
| 102743 | 201 | Women's Weathered Duck Wildwood Bib Overalls |
| 102788 | 412, 058 | Women's Clarksburg Full Zip Hoodie |
| 102080 | 011, 257 | Women's Original-Fit Crawford Pant |

INDUSTRIAL SALES TEAM

Brian Bonin

Northeast Region
ME, VT, NH, MA, RI, CT,
NJ, NY, DE, MD, PA, VA
[& Tyndale]
Cell: (860) 836-0109
bbonin@carhartt.com

Paul Noto

Southeast Region
AL, GA, FL, SC, NC
& Caribbean
Cell: (205) 585-7939
pnoto@carhartt.com

Greg Harris

Western Region
AZ, CA, NV, ID, OR,
WA, AK, HI
Cell: (512) 788-0024
gharris@carhartt.com

TBD

Rocky Mountain Region
CO, UT, WY, MT, ND

Rick Hawthorne

Central Region
KS, NE, WI, MN, MO, IA & SD
Cell: (816) 520-6859
rhawthorne@carhartt.com

TBD

Southwest Region
TX, NM

Bill Noble

Mid-Atlantic Region
MI, IL, OH, IN, KY, WV
Cell: (313) 300-4638
wnoble@carhartt.com

Barrett Marx

Gulf Coast Region
OK, AK, LA, MS, TN
Cell: (985) 705-0156
bmarx@carhartt.com

Michelle Love

National Accounts
National Accounts
Cell: (313) 408-3746
mlove@carhartt.com

Bill Marshall

Director of Industrial Sales
North America
Cell: (313) 394-9345
bmarshall@carhartt.com





