



carhartt



FALL 2017

TABLE OF CONTENTS



3 ROCKWALL

- C16101 Women's V-Neck Multi-Pocket Top *New Colors*
- C16201 Women's Mock Wrap Notch Neck Top *New Colors*
- C56101 Women's Multi-Pocket Cargo Pant *New Colors*
- C86101 Women's Warm Up Jacket *New Style*
- C56201 Women's Pull On Straight Leg Pant *New Colors*
- C15101 Men's V-Neck Multi-Pocket Top *New Colors*
- C55101 Men's Multi-Pocket Cargo Pant *New Colors*

9 PRINTS

- C16104 Women's Multi-Pocket V-Neck Print Top *New Print*
- C16304 Women's Lower Pocket V-Neck Print Top *New Print*
- C16204 Women's Mock Wrap Notch Neck Print Top

12 CROSS-FLEX

- C12110 Women's V-Neck Media Top *New Color*
- C12210 Women's Y-Neck Fashion Top *New Color*
- C12410 Women's Multi-Color Knit Mix V-Neck Top *New Color*
- C82310 Women's Knit Mix Zip Front Jacket
- C52110 Women's Utility Boot Cut Pant *New Color*
- C52210 Women's Flat Front Flare Pant
- C52310 Women's Knit Waist Straight Leg Cargo Pant *New Color*
- C12114 Women's V-Neck Print Top *New Prints*
- C12214 Women's Y-Neck Print Top *New Prints*

21 KNITS AND SUB-SCRUBS

- C33109 Women's Long Sleeve Force Tee
- C36109 Men's Long Sleeve Force Tee
- C30109 Women's Long Sleeve Burn-Out Jersey *New Color*

25 MEN'S RIPSTOP

- C15108 Men's Solid Ripstop Utility Top *New Color*
- C14108 Men's Color Block Utility Top
- C15208 Men's Ripstop Multi-Pocket Top *New Color*
- C15308 Men's V-Neck Raglan Sleeve Top *New Color*
- C84108 Men's Ripstop Zip Front Jacket
- C75108 Men's Ripstop Lab Coat *New Style*
- C54108 Men's Ripstop Multi-Cargo Pant *New Color*

31 REALTREE®

- C12405 Women's V-Neck Two Pocket Print Top
- C52405 Women's Utility Boot Cut Print Pant
- C15405 Men's One Pocket Print Top
- C85405 Men's Zip Front Print Jacket
- C55405 Men's Utility Print Pant

31 ACCESSORIES

- CWA101 Women's Camo Low Cut Sock *New Style*
- WA642-3 Women's Performance Work Crew Sock *New Style*
- WA757 Women's FORCE Active Compression Sock *New Style*
- A422-3 Men's FORCE Performance Work Crew Sock *New Style*
- A677 Men's FORCE Active Compression Sock *New Style*

39 SIZING INFORMATION



FORCE carhartt

ROCKWALL MEN'S V-NECK MULTI-POCKET TOP

C15101



NEW COLORS - CRB & WIN

Women's V-Neck Multi-Pocket Top C16101

WOMEN'S FIT FastDry® technology for quick wicking · Stain Breaker® technology releases stains · ID loop at shoulder · Pen pocket on sleeve · Double lower pockets with pen slots · Inner utility tape · Logo rivets for durability · Side vents · Tagless label at inner back neck · Stretch poplin fabric - 65% Polyester / 35% Cotton · Imported

COLORS Black (BLK) · **Caribbean Blue (CRB)** · Ceil Blue (CBL) · Navy (NVY) · Pewter (PEW) · Raspberry (RAS) · Royal (RYL) · Teal Blue (TBL) · White (WHT) · **Wine (WIN)**



XS	S	M	L	XL	2X	3X
•	•	•	•	•	•	•

Length: 27 ¼" (size M)



NEW COLORS - CRB & WIN

Women's Mock Wrap Notch Neck Top C16201

WOMEN'S FIT FastDry® technology for quick wicking · Stain Breaker® technology releases stains · ID loop at shoulder · Drop shoulder detail with triple-needle · Pen pocket on sleeve · Double lower pockets · Inner utility tape · Logo rivets for durability · Side vents · Tagless label at inner back neck · Stretch poplin fabric - 65% Polyester / 35% Cotton · Imported

COLORS Black (BLK) · **Caribbean Blue (CRB)** · Ceil Blue (CBL) · Navy (NVY) · Pewter (PEW) · Raspberry (RAS) · Royal (RYL) · Teal Blue (TBL) · White (WHT) · **Wine (WIN)**



XS	S	M	L	XL	2X	3X
•	•	•	•	•	•	•

Length: 27 ¼" (size M)



ROCKWALL



NEW

Women's Warm Up Jacket

C86101

WOMEN'S FIT FastDry® technology for quick wicking · Stain Breaker® technology releases stains · ID loop at shoulder · Dyed-to-match snaps · Double lower pockets · Inner utility tape · Logo rivets for durability · Side vents · Rib cuffs · Stretch poplin fabric - 65% Polyester / 35% Cotton · Imported

COLORS Black (BLK) · Ceil Blue (CBL) · Navy (NVY) · Pewter (PEW) Royal (RYL) · White (WHT)



XS	S	M	L	XL	2X	3X
•	•	•	•	•	•	•

Inseam: Regular - 29 ¼" (size M)



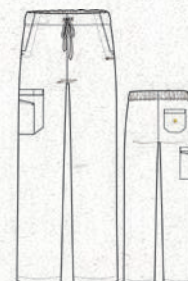
NEW COLORS - CRB & WIN

Women's Multi-Pocket Cargo Pant

C56101

WOMEN'S FIT FastDry® technology for quick wicking · Stain Breaker® technology releases stains · Back elastic · Full drawstring · Two front deep pockets · Double cargo pocket with pen slot · One back pocket · Logo rivets for durability · Stretch poplin fabric - 65% Polyester / 35% Cotton · Imported

COLORS Black (BLK) · **Caribbean Blue (CRB)** · Ceil Blue (CBL) Navy (NVY) · Pewter (PEW) · Raspberry (RAS) · Royal (RYL) Teal Blue (TBL) · White (WHT) · **Wine (WIN)**



XS	S	M	L	XL	2X	3X	
•	•	•	•	•	•	•	Regular
•	•	•	•	•	•	•	Petite

Inseam: Regular - 31", Petite - 28 ½"

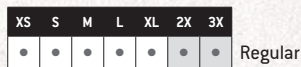


NEW COLORS - CRB & WIN

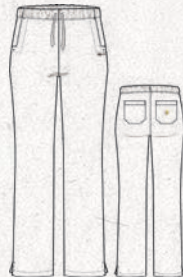
Women's Pull On Straight Leg Pant C56201

WOMEN'S FIT FastDry® technology for quick wicking · Stain Breaker® technology releases stains · Full elastic · Full drawstring · Two front deep pockets · Two back pockets · Bottom side vents · Logo rivets for durability · Stretch poplin fabric - 65% Polyester / 35% Cotton · Imported

COLORS Black (BLK) · **Caribbean Blue (CRB)** · Ceil Blue (CBL) · Navy (NVY) · Pewter (PEW) · Teal Blue (TBL) · White (WHT) · **Wine (WIN)**



Inseam: Regular - 31"

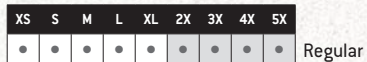
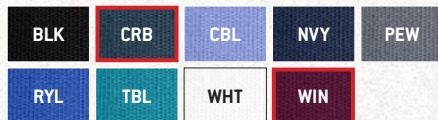


NEW COLORS - CRB & WIN

Men's V-Neck Multi-Pocket Top C15101

MEN'S FIT FastDry® technology wicks away sweat for comfort · Stain Breaker® technology releases stains · ID loop at shoulder · Pen pocket on sleeve · Double chest pocket with pen slot · Tagless label at inner back neck · Logo rivets for durability · Side vents · Stretch poplin fabric - 65% Polyester / 35% Cotton · Imported

COLORS Black (BLK) · **Caribbean Blue (CRB)** · Ceil Blue (CBL) · Navy (NVY) · Pewter (PEW) · Royal (RYL) · Teal Blue (TBL) · White (WHT) · **Wine (WIN)**



Inseam: Regular - 28 3/4" [size M]



ROCKWALL

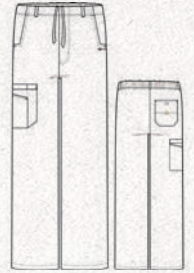
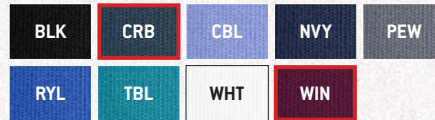


NEW COLORS - CRB & WIN Men's Multi-Pocket Cargo Pant

C55101

MEN'S FIT FastDry® technology wicks away sweat for comfort · Stain Breaker® technology releases stains · Half back elastic · Full inner tape drawstring · Carhartt button closure · Functional fly · Belt loops · Two front pockets · One back pocket with velcro closure · Double cargo pocket with pen slot · Logo rivets for durability · Stretch poplin fabric · 65% Polyester / 35% Cotton · Imported

COLORS Black (BLK) · **Caribbean Blue (CRB)** · Ceil Blue (CBL) · Navy (NVY) · Pewter (PEW) · Royal (RYL) · Teal Blue (TBL) · White (WHT) · **Wine (WIN)**



XS	S	M	L	XL	2X	3X	4X	5X	
•	•	•	•	•	•	•	•	•	Regular
•	•	•	•	•	•	•	•	•	Tall

Inseam: Regular - 31", Tall - 34"



NEW

Courageous Love

C16104 CGL

WOMEN'S FIT ID loop at shoulder · Pen pocket on sleeve · Double lower pockets with pen slots · Inner utility tape · Logo rivets for durability · Side vents · Tagless label at inner back neck · Stretch poplin fabric - 98% Cotton / 2% Spandex · Imported



COORDINATING COLORS



TRIM



XS	S	M	L	XL	2X	3X
•	•	•	•	•	•	•

Length: 27 ¼" (size M)

NEW

Flutter Garden

C16304 FLT

WOMEN'S FIT ID loop at shoulder · Pen pocket on sleeve · Lower invisible pockets · Logo rivets for durability · Side vents · Tagless label at inner back neck · Stretch poplin fabric - 98% Cotton / 2% Spandex · Imported



COORDINATING COLORS



TRIM



XS	S	M	L	XL	2X	3X
•	•	•	•	•	•	•

Length: 27 ¾" (size M)

Shaded sizes will have price upcharge.

PRINTS



CID Resources, Inc. will donate a portion of the profits of "Portrait Pup" print [C16104 PRP] to Best Friends Animal Society

Best Friends Animal Society is the only national animal welfare organization focused exclusively on ending the killing of animals in America's shelters. Best Friends runs the nation's largest no-kill sanctuary for companion animals, as well as lifesaving programs across the country. Since its founding in 1984, Best Friends has helped reduce the number of animals killed in shelters nationwide from 17 million per year to about 4 million.

Together, we can Save Them All



Portrait Pup

C16104 PRP

WOMEN'S FIT ID loop at shoulder · Pen pocket on sleeve · Double lower pockets with pen slots · Inner utility tape · Logo rivets for durability · Side vents · Tagless label at inner back neck · Stretch poplin fabric · 98% Cotton / 2% Spandex · Imported

COORDINATING COLORS



TRIM



Length: 27 1/4" (size M)



Take Wing

C16104 TWG

WOMEN'S FIT ID loop at shoulder · Pen pocket on sleeve · Double lower pockets with pen slots · Inner utility tape · Logo rivets for durability · Side vents · Tagless label at inner back neck · Stretch poplin fabric - 98% Cotton / 2% Spandex · Imported

COORDINATING COLORS



TRIM



XS	S	M	L	XL	2X	3X
•	•	•	•	•	•	•

Length: 27 ¼" (size M)



Summer Rain

C16204 SMR

WOMEN'S FIT ID loop at shoulder · Drop shoulder detail with triple-needle · Pen pocket on sleeve · Double lower pockets · Inner utility tape · Logo rivets for durability · Side vents · Tagless label at inner back neck · Stretch poplin fabric - 98% Cotton / 2% Spandex · Imported

COORDINATING COLORS



TRIM



XS	S	M	L	XL	2X	3X
•	•	•	•	•	•	•

Length: 27 ¼" (size M)





CROSS-FLEX WOMEN'S V-NECK MEDIA TOP

C12110





CROSS-FLEX



EAR BUD HOLDER



NEW COLOR - HTR

Women's V-Neck Media Top

C12110

WOMEN'S FIT FastDry® technology for quick wicking · Stain Breaker® technology releases stains · Rugged Flex® stretch technology for ease of movement · Locker loop label at back neck · Triple-needle stitching at shoulder seams · Ear bud holder · Double pocket at sleeve · Pen holder · Inner cell phone pocket · Logo D-Ring at double pocket · Four front lower pockets · Stretch dobby fabric · 94% Polyester / 6% Spandex · Imported

COLORS Azalea (AZL / GGN) · Black (BLK / CYN) · Caribbean Blue (CRB / CYN) · Ceil Blue (CBL / EVL) · Chocolate (CHC / CRL) · Coral (CRL / CYN) · Cyan (CYN / EVL) · Electric Violet (EVL / CYN) · Galaxy Blue (GBL / CYN) · Grape (GRP / GGN) · **Hunter (HTR / CYN)** · Khaki (KHI / AZL) · Navy (NVY / GGN) · Pewter (PEW / AZL) · Pink Rose (PKR / SVG) · Royal (RYL / CYN) · Silver Gray (SVG / PEW) · White (WHT / WHT) · Wine (WIN / AZL)



XS	S	M	L	XL	2X	3X
•	•	•	•	•	•	•

Length: 27 3/4" (size M)

NEW COLOR - HTR

Women's Y-Neck Fashion Top

C12210

WOMEN'S FIT FastDry® technology for quick wicking · Stain Breaker® technology releases stains · Rugged Flex® stretch technology for ease of movement · Locker loop label at back neck · Logo D-ring at waist tab · Pen holder · Two front lower pockets · Inner cell phone pocket · Inner logo utility tape at pocket · Stretch dobby fabric · 94% Polyester / 6% Spandex · Imported

COLORS Azalea (AZL / GGN) · Black (BLK / CYN) · Caribbean Blue (CRB / CYN) · Ceil Blue (CBL / EVL) · Chocolate (CHC / CRL) · Coral (CRL / CYN) · Cyan (CYN / EVL) · Electric Violet (EVL / CYN) · Galaxy Blue (GBL / CYN) · Grape (GRP / GGN) · **Hunter (HTR / CYN)** · Khaki (KHI / AZL) · Navy (NVY / GGN) · Pewter (PEW / AZL) · Pink Rose (PKR / SVG) · Royal (RYL / CYN) · Silver Gray (SVG / PEW) · White (WHT / WHT) · Wine (WIN / AZL)



XS	S	M	L	XL	2X	3X
•	•	•	•	•	•	•

Length: 27 3/4" (size M)



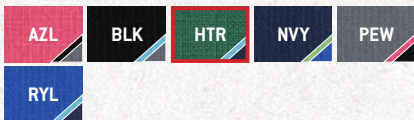
CROSS-FLEX

NEW COLOR - HTR

Women's Multi-Color Knit Mix V-Neck Top C12410

WOMEN'S FIT FastDry® technology for quick wicking · Stain Breaker® technology releases stains · Rugged Flex® stretch technology for ease of movement · Knit panels for engineered design to provide improved range of motion · Two front lower pockets · Two side entry pockets · Inner logo utility tape at pocket · Stretch dobby fabric - 94% Polyester / 6% Spandex · Imported

COLORS Azalea (AZL / PEW / BLK) · Black (BLK / PEW / CYN)
Hunter (HTR / CYN / NVY) · Navy (NVY / RYL / GGN) · Pewter (PEW / BLK / AZL)
 Royal (RYL / NVY / CYN)



XS	S	M	L	XL	2X	3X
•	•	•	•	•	•	•

Length: 27 1/2" (size M)



Women's Knit Mix Zip Front Jacket C82310

WOMEN'S FIT FastDry® technology for quick wicking · Stain Breaker® technology releases stains · Rugged Flex® stretch technology for ease of movement · Knit panels for engineered design to provide improved range of motion · Locker loop label at back neck · Logo D-ring at pocket · Pocket end reinforcements · Two front lower pockets · Long sleeve with thumb opening · Embroidery friendly · Stretch dobby fabric - 94% Polyester / 6% Spandex · Imported

COLORS Azalea (AZL / GGN) · Black (BLK / CYN) · Navy (NVY / GGN)
 Pewter (PEW / AZL) · Royal (RYL / CYN) · White (WHT / WHT)



XS	S	M	L	XL	2X	3X
•	•	•	•	•	•	•

Length: 28" (size M)



Shaded sizes will have price upcharge.

CROSS-FLEX



SCISSOR HOLDER



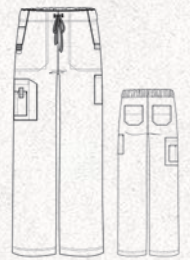
NEW COLOR - HTR

Women's Utility Boot Cut Pant

C52110

WOMEN'S FIT FastDry® technology for quick wicking · Stain Breaker® technology releases stains · Rugged Flex® stretch technology for ease of movement · Half back elastic · Full logo drawstring · Front pocket end reinforcements · Stylized double-needle front pockets · Logo D-ring at pocket end · EMT inspired cargo pocket · Pen holder at pocket · Double pocket at side · Two back pockets · Stretch dobby fabric · 94% Polyester / 6% Spandex · Imported

COLORS Azalea [AZL / GGN] · Black [BLK / CYN] · Caribbean Blue [CRB / CYN] · Ceil Blue [CBL / EVL] · Chocolate [CHC / CRL] · Coral [CRL / CYN] · Cyan [CYN / EVL] · Electric Violet [EVL / CYN] · Galaxy Blue [GBL / CYN] · Grape [GRP / GGN] · Hunter [HTR / CYN] · Khaki [KHI / AZL] · Navy [NVY / GGN] · Pewter [PEW / AZL] · Pink Rose [PKR / SVG] · Royal [RYL / CYN] · Silver Gray [SVG / PEW] · White [WHT / WHT] · Wine [WIN / AZL]



XS	S	M	L	XL	2X	3X
•	•	•	•	•	•	•
•	•	•	•	•	•	•
•	•	•	•	•	•	•

Regular

Petite

Tall

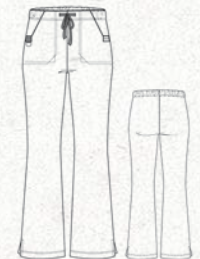
Inseam: 31", Petite: 28½", Tall: 33"

Women's Flat Front Flare Pant

C52210

WOMEN'S FIT FastDry® technology for quick wicking · Stain Breaker® technology releases stains · Rugged Flex® stretch technology for ease of movement · Half back elastic · Full logo drawstring · Front pocket end reinforcements · Stylized double-needle front pockets · Logo D-ring at pocket end · Side vents at hem · Stretch dobby fabric · 94% Polyester / 6% Spandex · Imported

COLORS Azalea [AZL / GGN] · Black [BLK / CYN] · Caribbean Blue [CRB / CYN] · Ceil Blue [CBL / EVL] · Chocolate [CHC / CRL] · Coral [CRL / CYN] · Cyan [CYN / EVL] · Electric Violet [EVL / CYN] · Galaxy Blue [GBL / CYN] · Grape [GRP / GGN] · Khaki [KHI / AZL] · Navy [NVY / GGN] · Pewter [PEW / AZL] · Pink Rose [PKR / SVG] · Royal [RYL / CYN] · Silver Gray [SVG / PEW] · White [WHT / WHT] · Wine [WIN / AZL]



XS	S	M	L	XL	2X	3X
•	•	•	•	•	•	•
•	•	•	•	•	•	•

Regular

Petite

Inseam: 31", Petite: 28½"



CROSS-FLEX

NEW COLOR - HTR

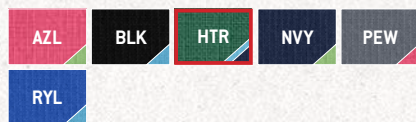
Women's

Knit Waist Straight Leg Cargo Pant

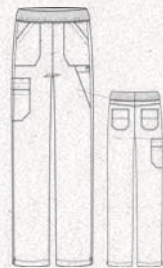
C52310

WOMEN'S FIT FastDry® technology for quick wicking · Stain Breaker® technology releases stains · Rugged Flex® stretch technology for ease of movement · Knit waistband · Two front pockets · Scissor pocket · Triple-cargo pocket · Back yoke · Two back pockets · Logo D-ring at pocket end · Side vents at hem · Stretch dobby fabric - 94% Polyester / 6% Spandex · Imported

COLORS Azalea (AZL / GGN) · Black (BLK / CYN) · **Hunter (HTR / CYN / NVY)*** · Navy (NVY / GGN) · Pewter (PEW / AZL) · Royal (RYL / CYN)



*Hunter comes with a navy waistband and cyan accents



XS	S	M	L	XL	2X	3X	
•	•	•	•	•	•	•	Regular
•	•	•	•	•	•	•	Petite

Inseam: 31", Petite: 28½"



NEW Cool Mist

C12114 CLM

WOMEN'S FIT FastDry® technology for quick wicking · Stain Breaker® technology releases stains · Rugged Flex® stretch technology for ease of movement · Locker loop label at back neck · Triple-needle stitching at shoulder seams · Ear bud holder · Double pocket at sleeve · Pen holder · Inner cell phone pocket · Logo D-Ring at double pocket · Four front lower pockets · Stretch dobby fabric - 94% Polyester / 6% Spandex · Imported

COORDINATING COLORS



TRIM



XS	S	M	L	XL	2X	3X
•	•	•	•	•	•	•

Length: 27 ¾" (size M)



Shaded sizes will have price upcharge.

CROSS-FLEX



NEW

Floral Nightfall

C12114 FLN

WOMEN'S FIT FastDry® technology for quick wicking · Stain Breaker® technology releases stains · Rugged Flex® stretch technology for ease of movement · Locker loop label at back neck · Triple-needle stitching at shoulder seams · Ear bud holder · Double pocket at sleeve · Pen holder · Inner cell phone pocket · Logo D-Ring at double pocket · Four front lower pockets · Stretch dobby fabric · 94% Polyester / 6% Spandex · Imported

COORDINATING COLORS



TRIM



XS	S	M	L	XL	2X	3X
<input type="checkbox"/>	<input type="checkbox"/>	<input type="checkbox"/>	<input type="checkbox"/>	<input type="checkbox"/>	<input type="checkbox"/>	<input type="checkbox"/>

Length: 27 3/4" (size M)

NEW

Flower Press

C12214 FPS

WOMEN'S FIT FastDry® technology for quick wicking · Stain Breaker® technology releases stains · Rugged Flex® stretch technology for ease of movement · Locker loop label at back neck · Logo D-ring at waist tab · Pen holder · Two front lower pockets · Inner cell phone pocket · Inner logo utility tape at pocket · Stretch dobby fabric · 94% Polyester / 6% Spandex · Imported

COORDINATING COLORS



TRIM



XS	S	M	L	XL	2X	3X
<input type="checkbox"/>	<input type="checkbox"/>	<input type="checkbox"/>	<input type="checkbox"/>	<input type="checkbox"/>	<input type="checkbox"/>	<input type="checkbox"/>

Length: 27 3/4" (size M)



CROSS-FLEX

NEW

Free Flow

C12214 FFW

WOMEN'S FIT FastDry® technology for quick wicking · Stain Breaker® technology releases stains · Rugged Flex® stretch technology for ease of movement · Locker loop label at back neck · Logo D-ring at waist tab · Pen holder · Two front lower pockets · Inner cell phone pocket · Inner logo utility tape at pocket · Stretch dobby fabric · 94% Polyester / 6% Spandex · Imported

COORDINATING COLORS

CRB CYN GBL HTR NVY

RYL

TRIM

NVY



XS	S	M	L	XL	2X	3X
•	•	•	•	•	•	•

Length: 27 3/4" (size M)



Pebble Beach

C12114 PBN

WOMEN'S FIT FastDry® technology for quick wicking · Stain Breaker® technology releases stains · Rugged Flex® stretch technology for ease of movement · Locker loop label at back neck · Triple-needle stitching at shoulder seams · Ear bud holder · Double pocket at sleeve · Pen holder · Inner cell phone pocket · Logo D-Ring at double pocket · Four front lower pockets · Stretch dobby fabric · 94% Polyester / 6% Spandex · Imported

COORDINATING COLORS

CBL GBL NVY RYL WHT

TRIM

RYL



XS	S	M	L	XL	2X	3X
•	•	•	•	•	•	•

Length: 27 3/4" (size M)



Shaded sizes will have price upcharge.

CROSS-FLEX



Southern Belle Pewter

C12114 SBH

WOMEN'S FIT FastDry® technology for quick wicking · Stain Breaker® technology releases stains · Rugged Flex® stretch technology for ease of movement · Locker loop label at back neck · Triple-needle stitching at shoulder seams · Ear bud holder · Double pocket at sleeve · Pen holder · Inner cell phone pocket · Logo D-Ring at double pocket · Four front lower pockets · Stretch dobby fabric - 94% Polyester / 6% Spandex · Imported

COORDINATING COLORS



TRIM



XS	S	M	L	XL	2X	3X
●	●	●	●	●	●	●

Length: 27 3/4" (size M)

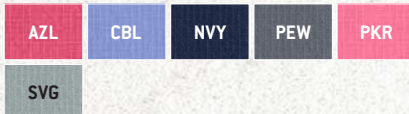


Southern Belle Navy

C12214 SBN

WOMEN'S FIT FastDry® technology for quick wicking · Stain Breaker® technology releases stains · Rugged Flex® stretch technology for ease of movement · Locker loop label at back neck · Logo D-ring at waist tab · Pen holder · Two front lower pockets · Inner cell phone pocket · Inner logo utility tape at pocket · Stretch dobby fabric - 94% Polyester / 6% Spandex · Imported

COORDINATING COLORS



TRIM



XS	S	M	L	XL	2X	3X
●	●	●	●	●	●	●

Length: 27 3/4" (size M)



KNITS & SUB-SCRUBS

WOMEN'S LONG SLEEVE FORCE TEE

C33109



KNITS & SUB-SCRUBS

Women's Long Sleeve Force Tee

C33109

WOMEN'S FIT FastDry® technology for quick wicking · Fights odors · Crew neckline · Forward shoulder detailing · Self cuff · 100% Polyester · Imported

COLORS Black (BLK) · Gray Heather (GRH) · Navy (NVY) · Oatmeal Heather (OAH) · White (WHT)



XS	S	M	L	XL	2X	3X
•	•	•	•	•	•	•

Length: 28 3/4" (size M)



Men's Long Sleeve Force Tee

C36109

MEN'S FIT FastDry® technology wicks away sweat for comfort · Fights odors · Crew neckline · Forward shoulder detailing · Self cuff · 100% Polyester · Imported

COLORS Black (BLK) · Gray Heather (GRH) · Navy (NVY) · Oatmeal Heather (OAH) · White (WHT)



S	M	L	XL	2X	3X
•	•	•	•	•	•

Length: 30" (size M)



Shaded sizes will have price upcharge.

KNITS & SUB-SCRUBS



NEW COLOR - RYL

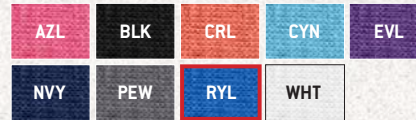
**Women's
Long Sleeve Burn-Out Jersey**

C30109

WOMEN'S FIT Round neck styling · Rib knit at cuff and neckline · Carhartt logo screen print at upper back of garment · 65% Polyester / 35% Rayon · Imported



COLORS Azalea (AZL) · Black (BLK) · Coral (CRL) · Cyan (CYN) · Electric Violet (EVL) · Navy (NVY) · Pewter (PEW) · **Royal (RYL)** · White (WHT)



XS	S	M	L	XL	2X	3X
•	•	•	•	•	•	•

Length: 27 3/4" (size M)



MEN'S RIPSTOP MULTI-POCKET TOP

C15208



MEN'S RIPSTOP

NEW COLOR - HTR

Men's Solid Ripstop Utility Top

C15108

MEN'S FIT Tradesman pocket at chest · Bi-swing at back yoke for ease of movement · Back length is 1 1/2" longer than the front for added coverage
 · Tagless label at inner back yoke · Ripstop fabric - 55% Cotton / 45% Polyester
 · Imported

COLORS Black (BLK) · Caribbean Blue (CRB) · Ceil Blue (CBL)
 Chocolate (CHC) · Dark Pewter (DKP) · Galaxy Blue (GBL) · **Hunter (HTR)**
 Khaki (KHI) · Navy (NVY) · Olive (OLI) · Pewter (PEW) · Red (RED)
 Royal (RYL) · White (WHT) · Wine (WIN)



Length: 30 3/4" (size M)

Men's Color Block Utility Top

C14108

MEN'S FIT Tradesman pocket at chest · Bi-swing at back yoke for ease of movement · Back length is 1 1/2" longer than the front for added coverage
 · Tagless label at inner back yoke · Ripstop fabric - 55% Cotton / 45% Polyester
 · Imported

COLORS Black (BLK / PEW) · Caribbean Blue (CRB / NVY)
 Ceil Blue (CBL / NVY) · Khaki (KHI / CHC) · Navy (NVY / PEW)
 Olive (OLI / CHC) · Pewter (PEW / WIN) · Royal (RYL / NVY) · Wine (WIN / NVY)



Length: 30 3/4" (size M)

Shaded sizes will have price upcharge.

MEN'S RIPSTOP



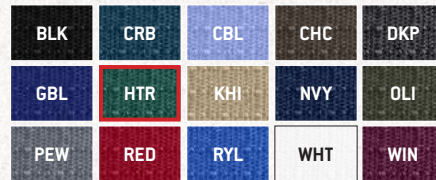
NEW COLOR - HTR

Men's Ripstop Multi-Pocket Top

C15208

MEN'S FIT Four pocket top with chest pocket at yoke and large front patch pockets · Tradesman pocket at lower front pockets · Bi-swing at back yoke for ease of movement · Tagless label at inner back yoke · Side vents at hem · Ripstop fabric - 55% Cotton / 45% Polyester · Imported

COLORS Black (BLK) · Caribbean Blue (CRB) · Ceil Blue (CBL) · Chocolate (CHC) · Dark Pewter (DKP) · Galaxy Blue (GBL) · **Hunter (HTR)** · Khaki (KHI) · Navy (NVY) · Olive (OLI) · Pewter (PEW) · Red (RED) · Royal (RYL) · White (WHT) · Wine (WIN)



S	M	L	XL	2X	3X
•	•	•	•	•	•

Length: 30 3/4" (size M)



NEW COLOR - PEW

Men's V-Neck Raglan Sleeve Top

C15308

MEN'S FIT Raglan sleeve · Tradesman pocket at chest · Back length 1 1/2" longer than front for added coverage · Tagless label at inner back neck · Ripstop fabric - 55% Cotton / 45% Polyester · Imported

COLORS Black (BLK) / Lime Punch · Navy (NVY) / Blaze Orange · Pewter (PEW) / Black



S	M	L	XL	2X	3X
•	•	•	•	•	•

Length: 30 3/4" (size M)

MEN'S RIPSTOP

Men's Ripstop Zip Front Jacket

C84108

MEN'S FIT Sporty rib knit collar · Zip front · Two front lower large pockets · Inner cell pocket · Zipper chest pocket · Long sleeve with rib cuffs · Back yoke with pleats for ease of movement · Longer length at back · Tagless label at inner back yoke · Ripstop fabric · 55% Cotton / 45% Polyester · Imported

COLORS Black (BLK) · Navy (NVY) · Olive (OLI) · Pewter (PEW) · Royal (RYL) · White (WHT)



Length: 31 ¼" (size M)



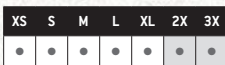
NEW

Men's Ripstop Lab Coat

C75108

MEN'S FIT Chest pocket with pen slot · Inner chest pocket · Two lower pockets · Cell phone pocket · Side entry access · Back yoke with back bi-swing · Sewn down back belt · Back vent · Tagless label at inner back yoke · Ripstop fabric · 55% Cotton / 45% Polyester · Imported

COLORS White (WHT)



Length: 36 ½" (size M)



Shaded sizes will have price upcharge.

MEN'S RIPSTOP



NEW COLOR - HTR

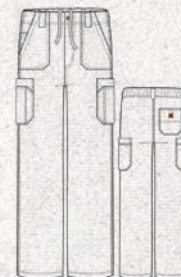
Men's Ripstop Multi-Cargo Pant

C54108

MEN'S FIT Eight total pockets and utility loop at wearer's right side
 · Triple-needle stitching at outseams · Tradesman pockets at cargos · Full drawstring with half elastic back and full functioning zipper fly · Ripstop fabric - 55% Cotton / 45% Polyester · Imported

COLORS Black (BLK) · Caribbean Blue (CRB) · Ceil Blue (CBL) · Chocolate (CHC) · Dark Pewter (DKP) · Chocolate (CHC) · Dark Pewter (DKP) · Galaxy Blue (GBL) · **Hunter (HTR)** · Khaki (KHI) · Navy (NVY) · Olive (OLI) · Pewter (PEW) · Red (RED) · Royal (RYL) · White (WHT) · Wine (WIN)

BLK	CRB	CBL	CHC	DKP
GBL	HTR	KHI	NVY	OLI
PEW	RED	RYL	WHT	WIN



XS	S	M	L	XL	2X	3X	
●	●	●	●	●	●	●	Regular
●	●	●	●	●	●	●	Short
●	●	●	●	●	●	●	Tall

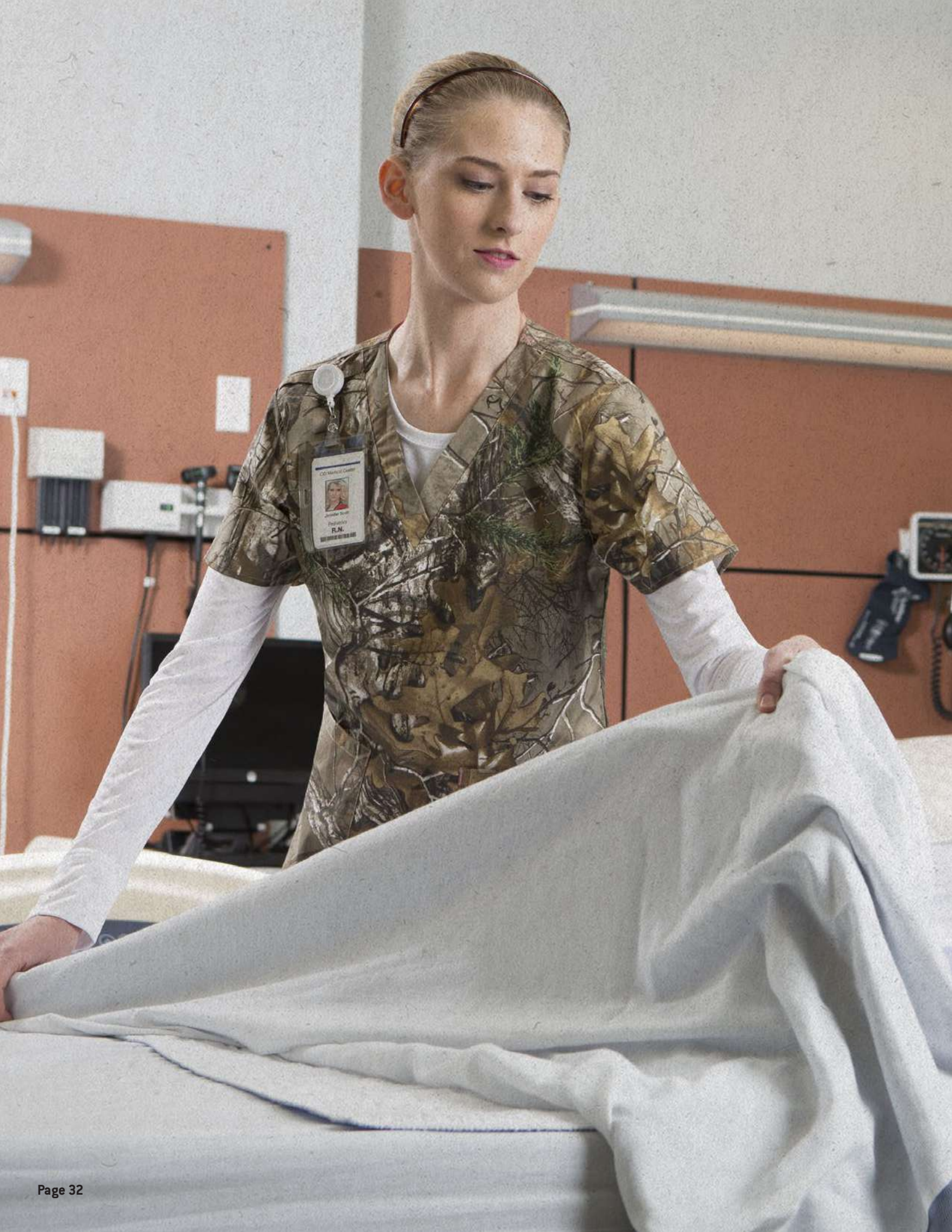
Inseam: Regular - 31", Short - 28", Tall - 34"



REALTREE® ONE POCKET PRINT TOP

C15405 RTX





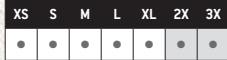
Women's V-Neck Two Pocket Print Top C12405 RTX

WOMEN'S FIT Shoulder loop for badge or pen holder · Two front pockets and pen slot · Tagless label at inner back yoke · Side slits · Stretch poplin fabric - 98% Cotton / 2% Spandex · Imported

COORDINATING COLORS



TRIM



Length: 26 3/4" (size M)



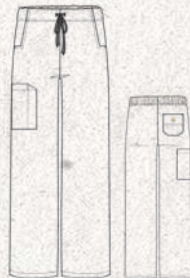
Women's Utility Boot Cut Print Pant C52405 RTX

WOMEN'S FIT Back elastic · Full drawstring · Two front deep pockets · Cargo pocket with pen slot · One back pocket · Stretch poplin fabric - 98% Cotton / 2% Spandex · Imported

COORDINATING COLORS



TRIM



Regular

Inseam: Regular - 31"





Men's One Pocket Print Top

C15405 RTX

MEN'S FIT V-Neckline with forward shoulders · Chest pocket with pen slot · Back yoke with pleats for ease of movement · Tagless label at inner back yoke · Side vents · Stretch poplin fabric - 98% Cotton / 2% Spandex · Imported

COORDINATING COLORS



TRIM



XS	S	M	L	XL	2X	3X
●	●	●	●	●	●	●

Length: 29 1/2" (size M)



Men's Zip Front Print Jacket

C85405 RTX

MEN'S FIT Sporty rib collar neckline · Rib knit cuffs · Two front deep pockets · Zip front closure · Back yoke with pleats for ease of movement · Tagless label at inner back yoke · Side vents · Longer length at back · Stretch poplin fabric - 98% Cotton / 2% Spandex · Imported

COORDINATING COLORS



TRIM



S	M	L	XL	2X	3X
●	●	●	●	●	●

Length: 29 3/4" (size M)

Men's Utility Print Pant

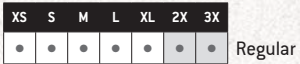
C55405 RTX

MEN'S FIT Functional fly and button closure · Back elastic · Inside drawstring for a secure fit · Belt loops · Two front deep pockets · Two cargo pockets · One back pocket · Boot cut · Stretch poplin fabric - 98% Cotton / 2% Spandex · Imported

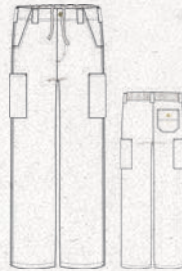
COORDINATING COLORS



TRIM



Inseam: Regular - 31"



ACCESSORIES



Women's Camo Low Cut Sock

CWA101 (3 PACK)

WOMEN'S FIT FastDry® technology for quick wicking · Antimicrobial treatment to fight odors · Spandex and compression arch support for full-motion support and stability · Reinforced heel and toe for added durability · Mesh panels for breathability · 44% Polyester / 33% Acrylic / 21% Nylon / 2% Spandex · Imported

Size: M

COLORS

BLK - (Black Camo / White Solid / Black Solid)



NVY - (Navy Camo / Royal Solid / Navy Solid)



RAS - (Raspberry Camo / Raspberry Solid / Black Solid)



TBL - (Teal Blue Camo / Teal Solid / Navy Solid)



Women's FORCE Performance Work Crew Sock

WA642-3 (3 PACK)

WOMEN'S FIT FastDry® technology for quick wicking · Fights odors · Spandex, a compression arch, and an ankle brace provide full-motion support and stability · Reinforced heel and toe provide added durability for longer wear · Top length: 7" · 96% Polyester / 4% Spandex · Imported

Size: M

COLORS

BLK - (Black)



WHT - (White)



ACCESSORIES

Women's FORCE Active Compression Sock

WA757 (1 PACK)

WOMEN'S FIT FastDry® technology for quick wicking · Fights odors · Work stronger and recover quicker with compression socks engineered to deliver muscular support and stability · Tight-knit compression zones around the calf provide maximum support and prevent muscle vibrations · Soft Delcra® Hydrotec polyester manages sweat for dry comfort · 47% Delcra® Hydrotec Polyester / 42% Nylon / 12% Spandex

Size: M

COLORS

CHH - (Charcoal)



Men's FORCE Performance Work Crew Sock

A422-3 (3 PACK)

MEN'S FIT FastDry® technology wicks away sweat · Fights odors · Spandex, a compression arch, and an ankle brace provide full-motion support and stability · Reinforced heel and toe provide added durability for longer wear · Top length: 6.75" - 8" · 97% Polyester / 3% Spandex · Imported

Size: L, XL

COLORS

BLK - (Black)



CHH - (Charcoal)



WHT - (White)



Shaded sizes will have price upcharge.

ACCESSORIES



Men's FORCE Active Compression Sock

A677 (1 PACK)

MEN'S FIT FastDry® technology wicks away sweat · Fights odors · Work stronger and recover quicker with compression socks engineered to deliver muscular support and stability · Tight-knit compression zones around the calf provide maximum support and prevent muscle vibrations · Soft Delcron® Hydrotec polyester manages sweat for dry comfort · 46% Delcron® Hydrotec Polyester / 42% Nylon / 12% Spandex

Size: L

COLORS

NVY - (Navy)

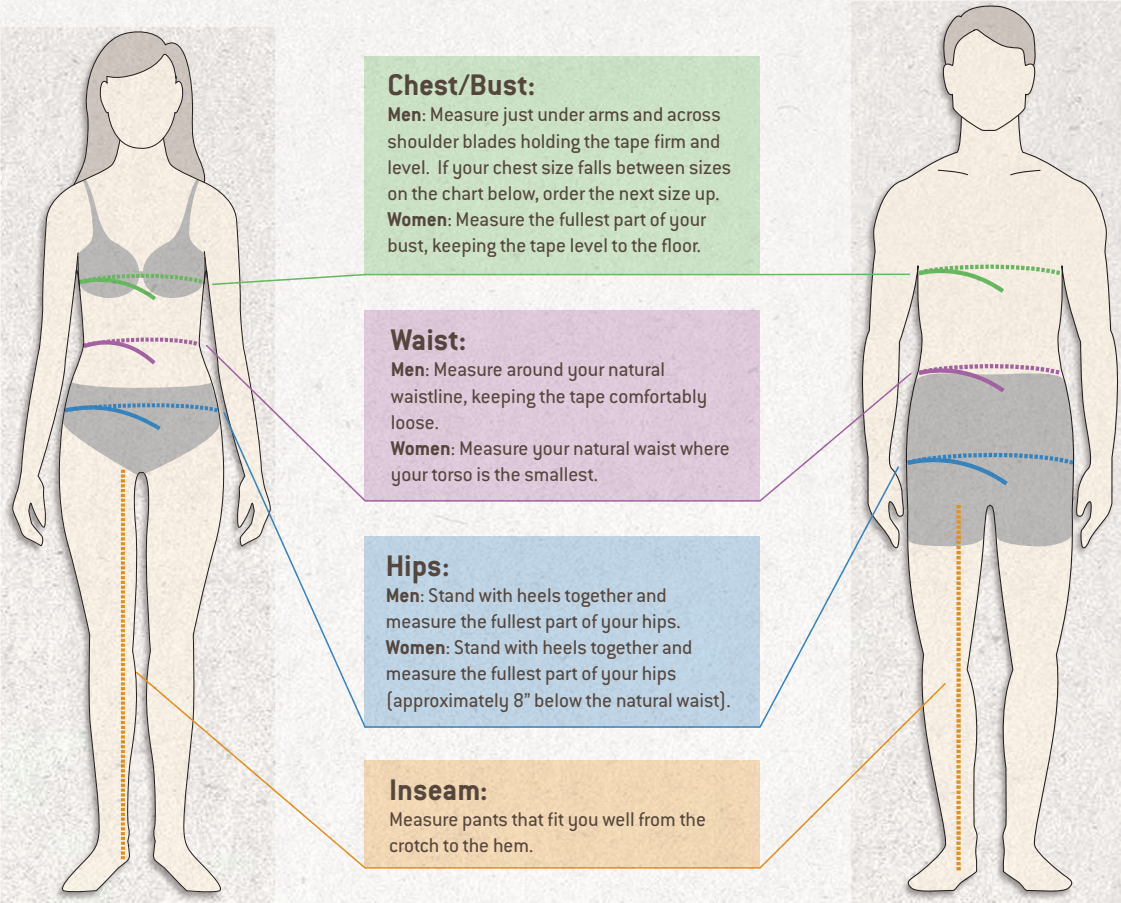


CHH - (Charcoal)



How to Measure

For best result, measure over your undergarments.



SIZING CHARTS

Women	XS		S		M		L		XL		2XL		3XL		4XL		5XL	
	0	2	4	6	8	10	12	14	16	18	20	22	24	26	28	30	32	34
Bust	32	33	34	36	37	39	40	43	44	47	48	51	52	55	56	59	60	63
Waist	24	25	26	28	29	31	32	35	36	39	40	43	44	47	48	51	52	55
Hip(Seat)	34	35	36	38	39	41	42	45	46	49	50	53	54	57	58	61	62	65

Inseam: Regular - 31", Petite - 28½", Tall - 33"

Unisex	XS		S		M		L		XL		2XL		3XL		4XL		5XL	
	0	2	4	6	8	10	12	14	16	18	20	22	24	26	28	30	32	34
Chest/Bust	32	33	34	36	37	39	40	43	44	47	48	51	52	55	56	59	60	63
Waist	24	25	26	28	29	31	32	35	36	39	40	43	44	47	48	51	52	55
Hip(Seat)	34	35	36	38	39	41	42	45	46	49	50	53	54	57	58	61	62	65

Inseam: Regular - 31"

Men	XS		S		M		L		XL		2XL		3XL		4XL		5XL	
	32	33	34	36	38	40	42	44	46	48	50	52	54	56	58	60	62	64
Chest	32	33	34	36	38	40	42	44	46	48	50	52	54	56	58	60	62	64
Waist	26	27	28	30	32	34	36	38	40	42	44	46	48	50	52	54	56	58
Hip(Seat)	32	33	34	36	38	40	42	44	46	48	50	52	54	56	58	60	62	64

Inseam: Regular - 31", Short - 28", Tall - 34"

Socks	S 7-9	M 9-11	L 10-13	XL 13-15
Men Shoe Size		5-10	6-12	11-15
Women Shoe Size	4-9	5 ½ - 11 ½	9-12	



carhartt.

CARHARTT
WILL ALWAYS REMAIN
THE BADGE OF A BETTER BUY
TO THOSE WHO KNOW
THE VALUE OF MONEY.

-HAMILTON CARHARTT

CID RESOURCES, INC.
Coppell, TX 75019
Toll Free Phone 877-554-3306 | Fax 877-734-1508

carhartt.com

MCCATFA17